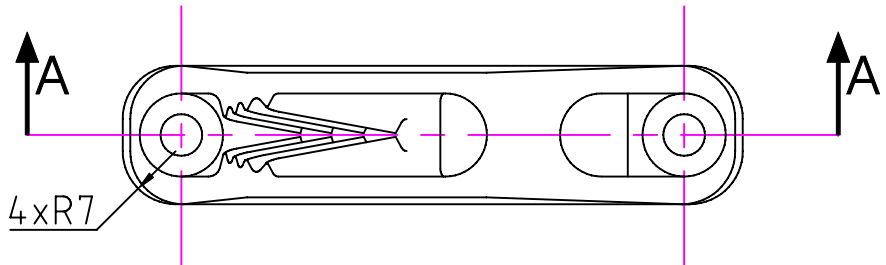
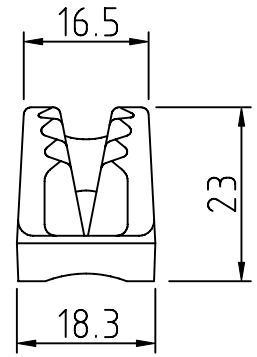
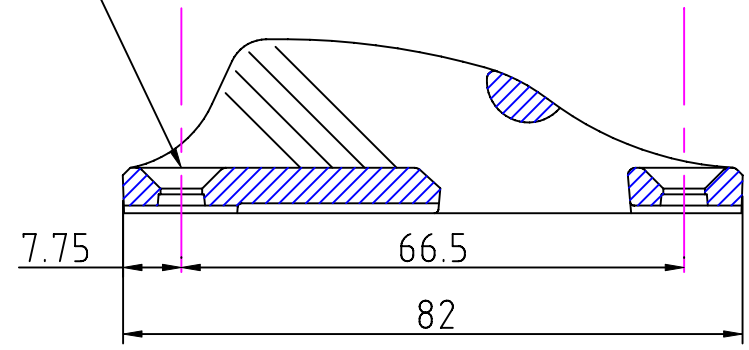
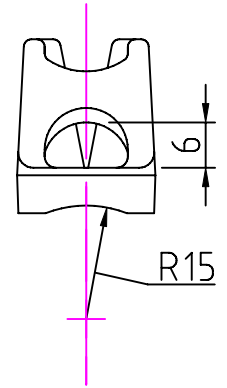


Notes: -  
For marine applications, use a silicone sealant or a bedding compound to avoid electrolytic action between the cleat and metal fastenings.

2 Holes  $\phi 5.5$   
countersunk  $\phi 10.0 \times 90^\circ$

Section 'AA'



**Clamcleat®**  
Rope cleats

Clamcleats Limited  
Watchmead  
Welwyn Garden City  
Hertfordshire AL7 1AP  
England

Telephone +44 (0)1707 330101  
Fax +44 (0)1707 321269  
<http://www.clamcleat-rope-cleats.com>

Scale 1:1  
All dimensions in mm.

Issue: 3. May 2006  
ID2111.dwg

Material:  
Diecast Aluminium

Installation Drawing for: -  
**CL211 Mk1**  
Mk1 Racing Junior