

LOWRANCE

ELITE Ti

Operator Manual

ENGLISH



SVIB

Preface

Disclaimer

As Navico is continuously improving this product, we retain the right to make changes to the product at any time which may not be reflected in this version of the manual. Please contact your nearest distributor if you require any further assistance.

It is the owner's sole responsibility to install and use the equipment in a manner that will not cause accidents, personal injury or property damage. The user of this product is solely responsible for observing safe boating practices.

NAVICO HOLDING AS AND ITS SUBSIDIARIES, BRANCHES AND AFFILIATES DISCLAIM ALL LIABILITY FOR ANY USE OF THIS PRODUCT IN A WAY THAT MAY CAUSE ACCIDENTS, DAMAGE OR THAT MAY VIOLATE THE LAW.

Governing Language: This statement, any instruction manuals, user guides and other information relating to the product (Documentation) may be translated to, or has been translated from, another language (Translation). In the event of any conflict between any Translation of the Documentation, the English language version of the Documentation will be the official version of the Documentation.

This manual represents the product as at the time of printing. Navico Holding AS and its subsidiaries, branches and affiliates reserve the right to make changes to specifications without notice.

Trademarks

Lowrance® and Navico® are registered trademarks of Navico.

Simrad® is used by license from Kongsberg.

Navionics® is a registered trademark of Navionics, Inc.

NMEA® and NMEA 2000® are registered trademarks of the National Marine Electronics Association.

Fishing Hot Spots® is a registered trademark of Fishing Hot Spots Inc. Copyright© 2012 Fishing Hot Spots.

C-MAP is a trademark of Jeppesen.

SD™ and microSD™ are trademarks or registered trademarks of SD-3C, LLC in the United States, other countries or both.

Wi-Fi® is a registered trademark of the Wi-Fi Alliance®.

Additional mapping data: Copyright© 2012 NSI, Inc.: Copyright© 2012 by Richardson's Maptech.

Bluetooth® is a registered trademark of Bluetooth SIG, Inc.

Power-Pole® is a registered trademark of JL Marine Systems, Inc.

C-Monster™ is a trademark of JL Marine Systems, Inc.

Navico product references

This manual can refer to the following Navico products:

- Broadband Sounder™ (Broadband Sounder)
- DownScan Imaging™ (DownScan)
- DownScan Overlay™ (Overlay)
- GoFree™ (GoFree)
- INSIGHT GENESIS® (Insight Genesis)
- SmartSteer™ (SmartSteer)
- StructureMap™ (StructureMap)
- StructureScan® (StructureScan)
- StructureScan® HD (StructureScan HD)



Warranty

The warranty card is supplied as a separate document.

In case of any queries, refer to the brand website of your display or system: lowrance.com.

Regulatory statements

This equipment is intended for use in international waters as well as coastal sea areas administered by the USA, and countries of the E.U. and E.E.A.

This equipment complies with:

- CE under 2014/53/EU Directive
- The requirements of level 2 devices of the Radio communications (Electromagnetic Compatibility) standard 2008
- Part 15 of the FCC Rules. Operation is subject to the following two conditions: (1) this device may not cause harmful interference, and (2) this device must accept any interference

received, including interference that may cause undesired operation.

The relevant Declaration of conformity is available on the following website: lowrance.com.

About this manual

This manual is a reference guide for operating the ELITE Ti. It assumes that all equipment is installed and configured, and that the system is ready to use.

The manual assumes that the user has basic knowledge of navigation, nautical terminology and practices.

Important text that requires special attention from the reader is emphasized as follows:

→ **Note:** Used to draw the reader's attention to a comment or some important information.

⚠ **Warning:** Used when it is necessary to warn personnel that they should proceed carefully to prevent risk of injury and/or damage to equipment/personnel.

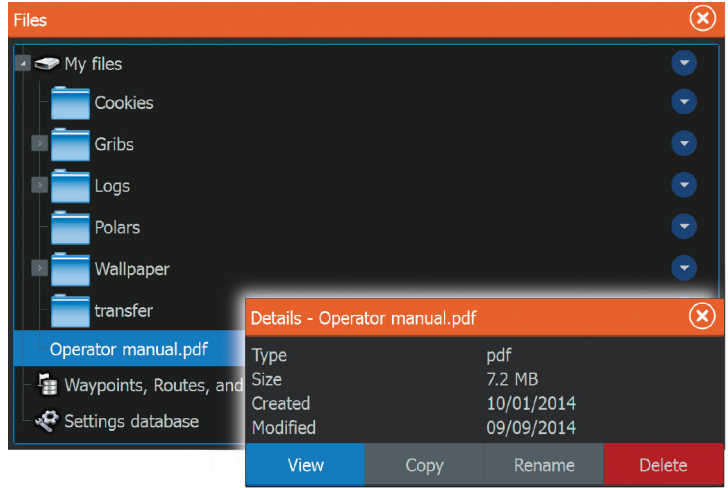
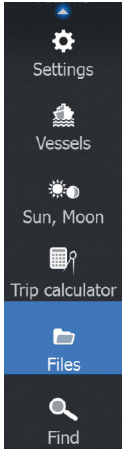
Manual version

This manual is written for software version 1.0. The manual is continually updated to match new software releases. The latest available manual version can be downloaded from lowrance.com.

Viewing the manual on the screen

The PDF viewer included in the unit makes it possible to read the manuals and other PDF files on the screen. Manuals can be downloaded from lowrance.com.

The manuals can be read from a card inserted in the card reader or copied to the unit's internal memory.

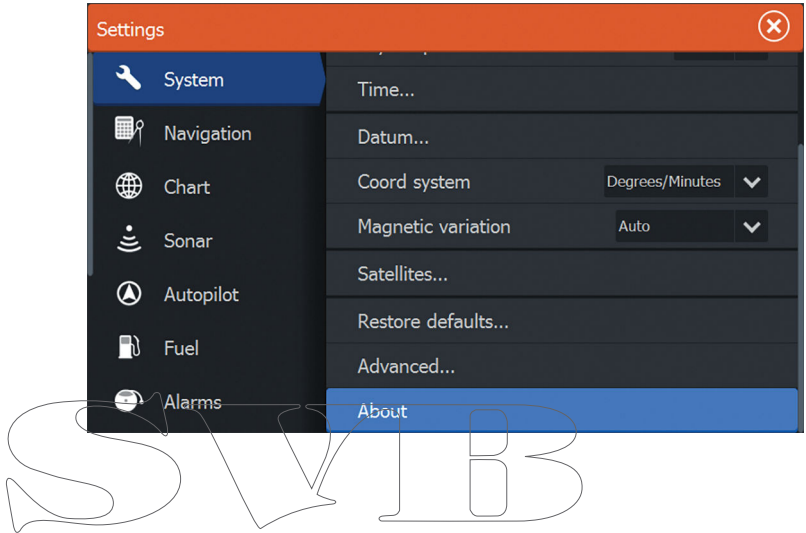


Use the menu options or the keys and on-screen buttons to maneuver in the PDF file as described below:

- Search; Goto page; Page Up and Down
Select the relevant panel button.
- Scroll pages
Drag finger on the screen in any direction.
- Panning on the page
Drag finger on the screen in any direction.
- Zoom In/Out
Key operation: Use the **+** and **-** keys.
- Exit the PDF viewer
Select the **X** in the upper right corner of the panel.

The Software version

The software version currently on this unit can be found in the About dialog. The About dialog is available in the System Settings. For more information, refer to *"About"* on page 110. For upgrading your software, refer to *"Software upgrades"* on page 115.



SVIB

Contents

13 Introduction

- 13 Front controls
- 14 The Home page
- 15 Application pages
- 16 Power-Pole anchors

19 Basic operation

- 19 System Controls dialog
- 19 Turning the system on and off
- 20 Display illumination
- 20 Locking the touchscreen
- 20 Using menus and dialogs
- 21 Selecting pages and panels
- 21 Using the cursor on the panel
- 23 Creating a Man Overboard waypoint
- 24 Screen capture

25 Customizing your system

- 25 Customizing the Home page wallpaper
- 25 Adjusting panel size
- 26 Data Overlay
- 26 Adding new favorite pages
- 27 Edit favorite pages

28 Charts

- 28 The Chart panel
- 29 Chart data
- 29 Selecting chart type
- 29 Vessel symbol
- 29 Chart scale
- 30 Panning the chart
- 30 Positioning the vessel on the chart panel
- 31 Displaying information about chart items
- 31 Using the cursor on the chart panel
- 32 Creating routes
- 32 Find objects on chart panels
- 32 3D charts
- 33 Chart overlay

- 34 Insight charts
- 35 Navionics charts
- 39 Jeppesen charts
- 44 Chart settings

47 Waypoints, Routes, and Trails

- 47 Waypoints, Routes, and Trails dialogs
- 47 Waypoints
- 49 Routes
- 52 Trails

53 Navigating

- 53 Steer panel
- 54 Navigate to cursor position
- 54 Navigate a route
- 55 Navigating with the autopilot
- 56 Navigation settings

58 Sonar

- 58 The Sonar image
- 59 Zooming the image
- 59 Using the cursor on the image
- 59 Viewing history
- 60 Setting up the image
- 62 Stop sonar
- 62 Advanced options
- 63 Start recording log data
- 64 Stop recording log data
- 65 Viewing the recorded sounder data
- 66 Sonar view options
- 68 Sonar settings

71 StructureScan

- 71 The StructureScan image
- 72 Zooming the StructureScan image
- 72 Using the cursor on the StructureScan panel
- 73 Viewing StructureScan history
- 73 Setting up the StructureScan image
- 74 Stop sonar
- 75 Advanced StructureScan settings

76 StructureMap

- 76 The StructureMap image
- 76 Activating Structure overlay
- 77 StructureMap sources
- 78 StructureMap tips
- 78 Recording StructureScan data
- 79 Using StructureMap with mapping cards
- 80 Structure options

82 Info panels

- 82 Dashboards
- 82 Customizing the Info panel

84 Trolling motor autopilot

- 84 Safe operation with the autopilot
- 85 Switching from automatic navigation to standby mode
- 85 Autopilot interface
- 86 Autopilot control of the trolling motor
- 90 Autopilot settings

92 Wireless connection

- 92 Connect and disconnect from a wireless hotspot
- 93 GoFree Shop
- 93 GoFree Controller & Viewer
- 93 Uploading log files to Insight Genesis
- 94 Bluetooth wireless technology
- 95 Wireless settings

98 AIS

- 98 AIS target symbols
- 99 Searching for AIS items
- 99 Viewing information about single AIS targets
- 100 Calling an AIS vessel
- 100 AIS SART
- 102 Vessel alarms
- 103 Vessel settings

105 Alarms

- 105 Alarm system
- 105 Type of messages
- 105 Single alarms
- 105 Multiple alarms
- 106 Acknowledging a message
- 106 Alarms dialog

108 Tools

- 108 Waypoints/routes/trails
- 108 Tides
- 108 Alarms
- 108 Settings
- 111 Vessels
- 111 Sun, Moon
- 112 Trip calculator
- 112 Files
- 112 Find
- 112 GoFree Shop

114 Maintenance

- 114 Preventive maintenance
- 114 Checking the connectors
- 114 Touchscreen calibration
- 114 NMEA Data logging
- 115 Software upgrades
- 116 Backing up your system data

119 Simulator

- 119 Demo mode
- 119 Simulator source files
- 120 Advanced simulator settings

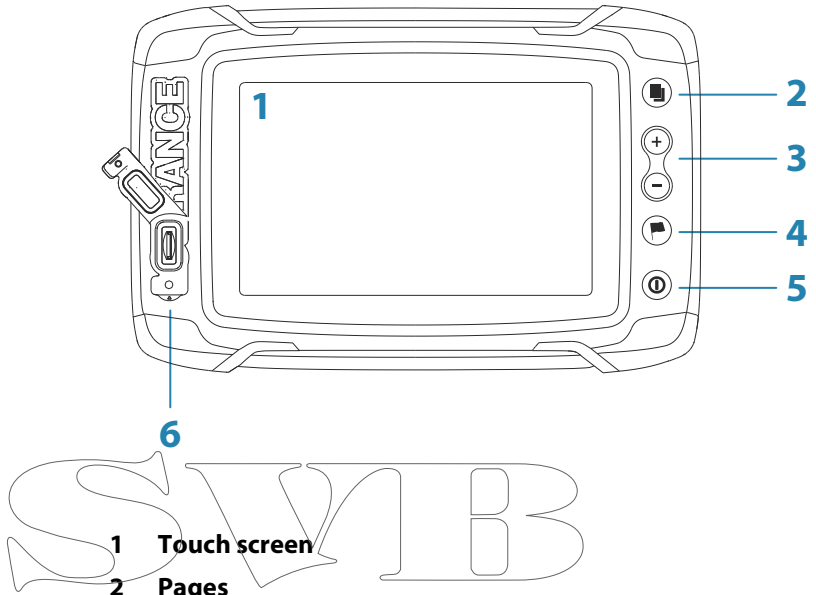
121 Touchscreen operation



1

Introduction

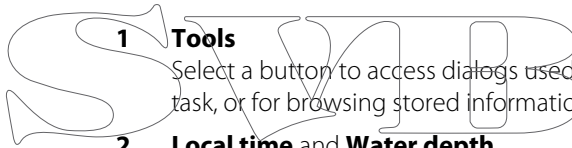
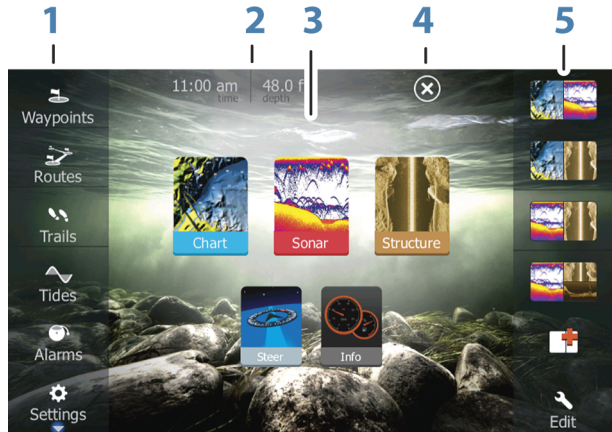
Front controls



- 1 Touch screen**
- 2 Pages**
- 3 Zoom out / Zoom in (combined press = MOB)**
- 4 New waypoint (long press = Find dialogue)**
- 5 Power button**
Press and hold to turn the unit ON/OFF.
Press once to display the System Controls dialog.
- 6 Card reader (behind logo)**

The Home page

The **Home** page is accessed from any operation by a short press on the **Pages** key.



1 **Tools**

Select a button to access dialogs used for carrying out a task, or for browsing stored information.

2 **Local time and Water depth**

3 **Applications**

Select a button to display the application as a full page panel.

Press and hold a button to display pre-configured split page options for the application.

4 **Close button**

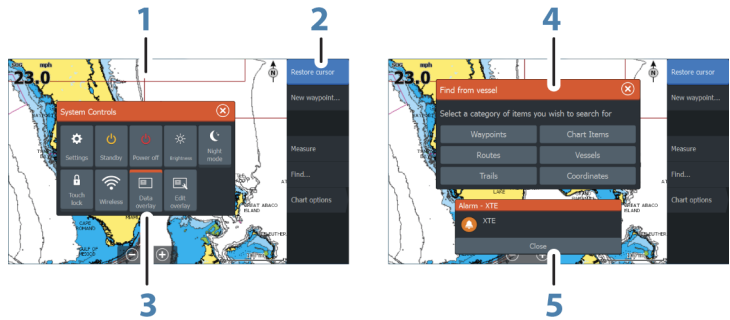
Select to exit the **Home** page and return to the previous active page.

5 **Favorites**

Select a button to display the panel combination.

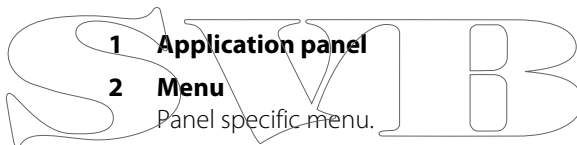
Press and hold a favorite button to enter edit mode for the Favorites panel.

Application pages



Each application connected to the system is presented on panels. The application can be presented as a full page, or in combination with other panels in a multiple panel page.

All application pages are accessed from the **Home** page.



3 System Controls dialog

Quick access to basic system settings. Display the dialog by a short press on the **Power** key.

4 Dialog

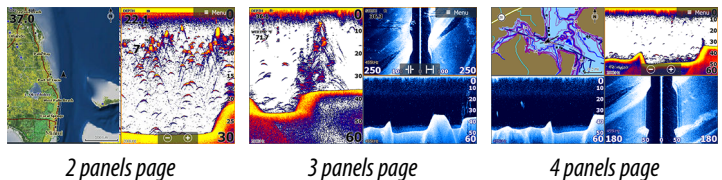
Information to or input from the user.

5 Alarm message

Displayed if dangerous situations or system faults occur.

Split pages

You can have up to 4 panels on each page.



Panel sizes in a split page can be adjusted from the **System Controls** dialog.

Quick split pages

Each full screen application has several pre-configured **quick split** pages, featuring the selected application combined with each of the other panels.

→ **Note:** The number of quick split pages cannot be changed, and the pages cannot be customized or deleted.

Access a **quick split** page by pressing and holding the **application** button on the **Home** page.



SVMB

Favorite pages

All preconfigured favorite pages can be modified and deleted, and you can create your own. You can have a total of 12 favorite pages.

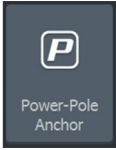
For more information, refer to *"Adding new favorite pages"* on page 26.



Power-Pole anchors

→ **Note:** Bluetooth available early 2016.

Power-Pole anchors, which can be controlled by the C-Monster Control System installed on your boat, can be controlled from the ELITE Ti. To control the Power-Poles, you 'pair' the Power-Poles with the ELITE Ti using Bluetooth wireless technology available in both products.



Power-Pole controls

When Power-Poles are paired with the ELITE Ti, the Power-Pole button becomes available in the System Controls dialog. Select it to display the Power-Pole controller.

For pairing Bluetooth devices, refer to *"Pairing Bluetooth devices"* on page 94. If you are pairing dual Power-Poles, also review *"Pairing with dual Power-Poles"* on page 95.

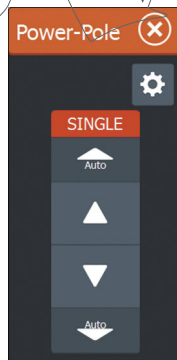
When the Power-Pole controller is opened, the system connects to paired Power-Poles. When the connection is confirmed the control buttons are enabled.

→ **Note:** The controls are grayed out until the system connects with the Power-Poles. Once connected and functional the arrows in the dialog turn white.

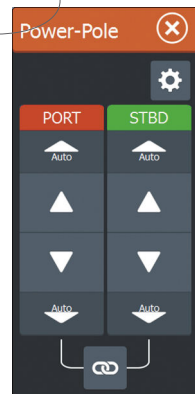
The Power-Pole controller displays control buttons for each Power-Pole that is paired to the ELITE Ti.

Single press the Auto buttons to raise and lower the Power-Poles automatically all the way up and down. The manual up and down buttons raise and lower them as quickly, and as high or low as you want.

SWIRB



Single Power-Pole controller



Dual Power-Poles controller



On a dual controller you can raise and lower the Power-Poles separately, or press the sync (links) button to allow for control of both with a single press of the auto buttons or the manual up and down buttons.



Stay connected

Select the Stay connected (cog) button on the Power-Pole controller to open the Power-Pole settings dialog where you can select to stay connected to all paired Power-Pole anchors.

→ **Note:** Selecting to **Stay connected** speeds up access to the controls, but the anchors cannot be controlled from another display when it is selected. Turn off this option to allow connection from other displays.

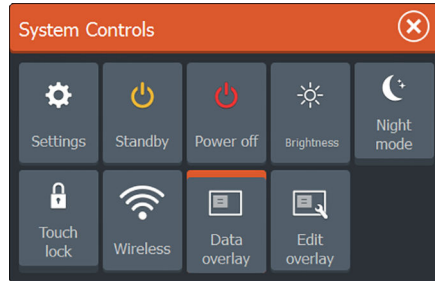
SVIB

2

Basic operation

System Controls dialog

The System Controls dialog provides quick access to basic system settings. You display the dialog by making a short press on the **Power** key.



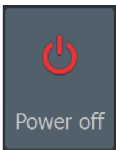
Activating functions

Select the icon of the function you want to set or toggle on or off. For those functions that toggle on and off, an orange bar across the top of the icon indicates the function is activated, as shown in the Data Overlay icon above.

Turning the system on and off

You turn the system on and off by pressing and holding the **Power** key. You can also turn the unit off from the **System Controls** dialog.

If the **Power** key is released before the shut-down is completed, the power off process is cancelled.



Standby mode

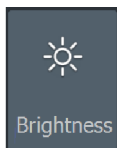
In Standby mode, the Sonar and the backlight for screen and keys are turned off to save power. The system continues to run in the background.

You select Standby mode from the **System Controls** dialog.

Switch from Standby mode to normal operation by a short press on the **Power** key.



Display illumination



Brightness

The display backlighting can be adjusted at any time from the **System Controls** dialog.

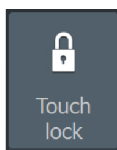
You can also cycle the preset backlight levels by short presses on the **Power** key.

Night mode

The night mode option optimizes the color palette and backlight for low light conditions.

→ **Note:** Details on the chart may be less visible when the Night mode is selected!

Locking the touchscreen



You can temporarily lock a touchscreen to prevent accidental operation of the system. Lock the touchscreen when large amounts of water are on the screen, for example, in heavy seas and weather. This feature is also useful when cleaning the screen while the unit is turned on.

When the touch lock is active you can only operate the unit from the keys.

You lock the touchscreen from the **System Controls** dialog.

You remove the lock function by a short press on the **Power** key.

Using menus and dialogs

Menus

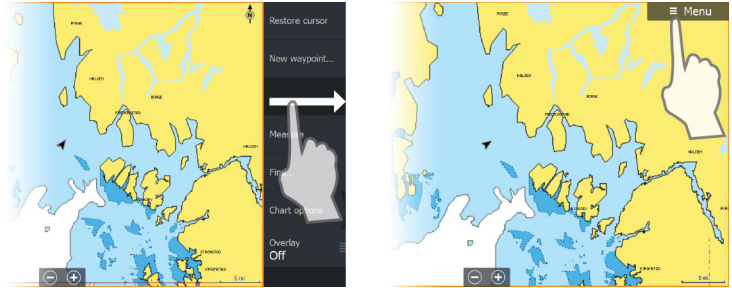
The menu is used to operate the system and to adjust settings.

- Activate a menu item and toggle on/off an option by selecting it
- Adjust a slide bar value by either:
 - dragging the slide bar
 - selecting the **+** or **-** icons

Select the **Back** menu option to return to the previous menu level, and then exit.

Page menus can be hidden to allow pages to be a full screen view. To hide the menu, drag the menu to the right.

When you hide a menu on one page, the menu on other pages is also hidden. To display the menu again, select the menu option.



The status of the cursor (active vs. inactive) changes the menu options.

Dialog boxes

Numeric and alphanumeric keyboards are automatically displayed when required for entering user information in dialogs.

A dialog is closed by saving or cancelling the entry.

A dialog can also be closed by selecting the **X** in the dialog's upper right corner.

Selecting pages and panels

Selecting a page

- Select a full page panel by selecting the relevant application button on the **Home** page
- Select a favorite page by selecting the relevant favorite button
- Select a predefined split panel by pressing and holding the relevant application icon

Select active panel

In a multiple panel page, only one panel can be active at a time. The active panel is outlined with a border.

You can only access the page menu of an active panel.

You activate a panel by tapping it.

Using the cursor on the panel

The cursor can be used to measure a distance, to mark a position, and to select items.

N 59°01.280'
E 13°37.148'
110.5 mi, 104 °M

By default, the cursor is not shown on the panel.

Position the cursor by tapping the desired location on the screen.

When the cursor is active, the cursor position window is displayed.

To remove the cursor and cursor elements from the panel, select the **Clear cursor** option.

GoTo cursor

You can navigate to a selected position on the image by positioning the cursor on the panel, then using the **Goto Cursor** option in the menu.

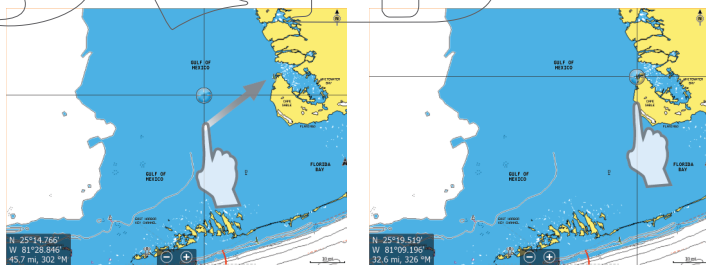
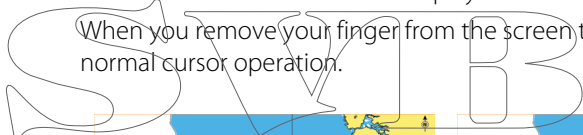
The Cursor assist function

The cursor assist function allows for fine tuning and precision placement of the cursor without covering details with your finger.

Press and hold your finger on the screen to switch the cursor symbol to a selection circle, appearing above your finger.

Without removing your finger from the screen, drag the selection circle over the desired item to display item information.

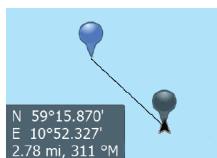
When you remove your finger from the screen the cursor reverts to normal cursor operation.



Measuring distance

The cursor can be used to measure the distance between your vessel and a selected position, or between 2 points on the chart panel.

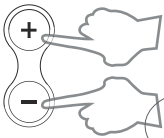
1. Position the cursor on the point from where you want to measure the distance. Start the measure function from the menu



- The measuring icons appear with a line drawn from the vessel center to the cursor position, and the distance is listed in the cursor information window.
- 2. You can reposition the measuring points by dragging either icon as long as the measuring function is active
- **Note:** The bearing is always measured from the grey icon to the blue icon.

You can also start the measuring function without an active cursor. Both measuring icons are then initially located at the vessel position. The grey icon follows the vessel as the vessel moves, while the blue icon remains at the position given when you activated the function. You terminate the measuring function by selecting the **Finish measuring** menu option.

Creating a Man Overboard waypoint



If an emergency situation should occur, you can save a Man Overboard (MOB) waypoint at the vessel's current position by pressing the **Zoom In (+)** and **Zoom out (-)** keys simultaneously.

When you activate the MOB function the following actions are automatically performed:

- a MOB waypoint is created at the vessel's position
- the display switches to a zoomed chart panel, centered on the vessel's position
- the system displays navigation information back to the MOB waypoint

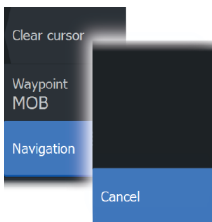
Multiple MOB waypoints are saved by repeatedly pressing the **MOB** buttons. The vessel continues to show navigation information to the initial MOB waypoint. Navigation to subsequent MOB waypoints needs to be done manually.

Cancel navigation to MOB

The system continues to display navigational information towards the MOB waypoint until you cancel the navigation from the menu.

Display MOB waypoint information

You can display MOB information by selecting the MOB waypoint and then the MOB waypoint pop-up.

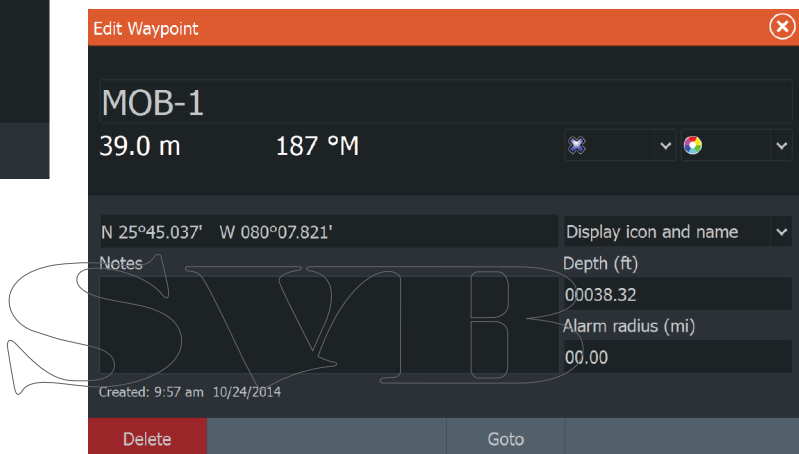
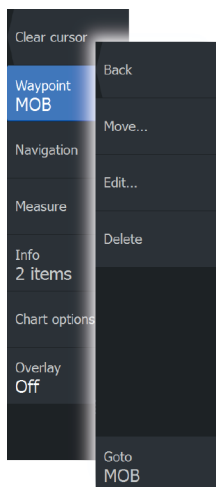


The MOB waypoint menu option

When an MOB waypoint is activated, you can use the **Waypoint MOB** menu option to:

- **Move** it on the panel
- **Edit** its attributes
- **Delete** it
- **Goto** it

When you select the Edit menu option the Edit Waypoint dialog opens.



Screen capture

Simultaneously press the **Pages** and **Power** keys to take a screen capture. Screen captures are saved to internal memory.

To view files, refer to "*Files*" on page 112.

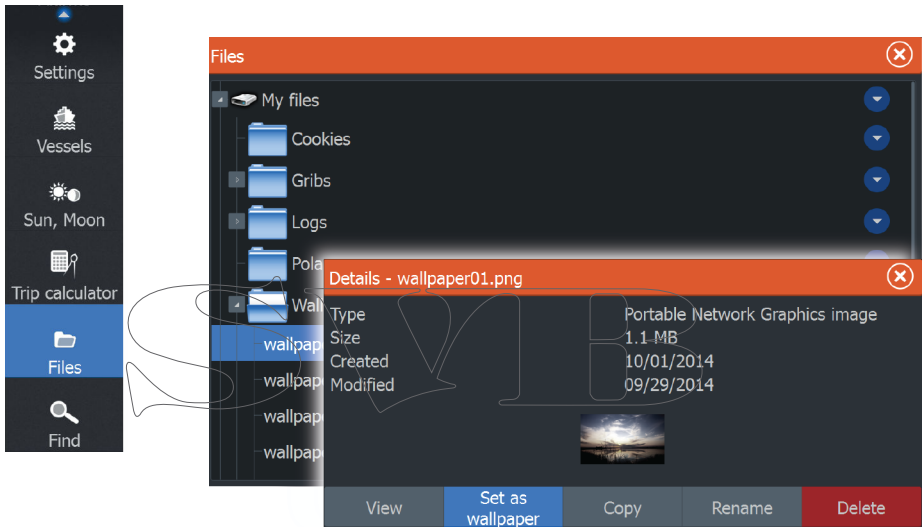
3

Customizing your system

Customizing the Home page wallpaper

The Home page's wallpaper can be customized. You can select one of the pictures included with the system, or you can use your own picture in .jpg or .png format.

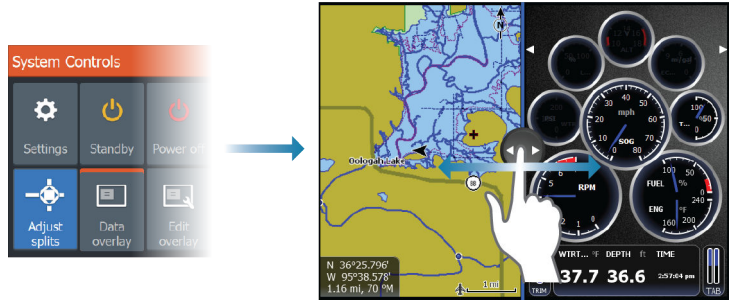
The images can be available on any location that can be seen in the files browser. When a picture is chosen as the wallpaper, it is automatically copied to the Wallpaper folder.



Adjusting panel size

You can change the panel size for an active split page. The panel size can be adjusted for both favorite pages and for predefined split pages.

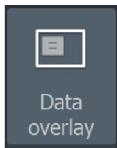
1. Activate the **System Controls** dialog
2. Select the adjust splits option in the dialog
3. Adjust the panel size by dragging the adjustment icon
4. Confirm your changes by tapping one of the panels or selecting the save option in the menu.



The changes are saved to the active favorite or split page.

Data Overlay

You can have data information as overlay on a page. The information can be any data available on the network.



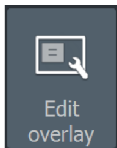
Turning Data overlay on and off

You can turn overlay data on or off for any active page by selecting the **Data overlay** icon on the **System Controls** dialog. When Data overlay is on, an orange bar appears above the icon.

Edit overlay data

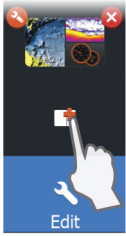
Use the **Edit overlay** option on the **System Controls** dialog to access edit menu options to:

- Add a new data overlay to the active panel.
- Delete a selected data overlay.
- Change a selected data overlay to display different data.
- Configure a selected data overlay appearance (digital or analog, size, etc).
- Re-locate an item by selecting and moving it.



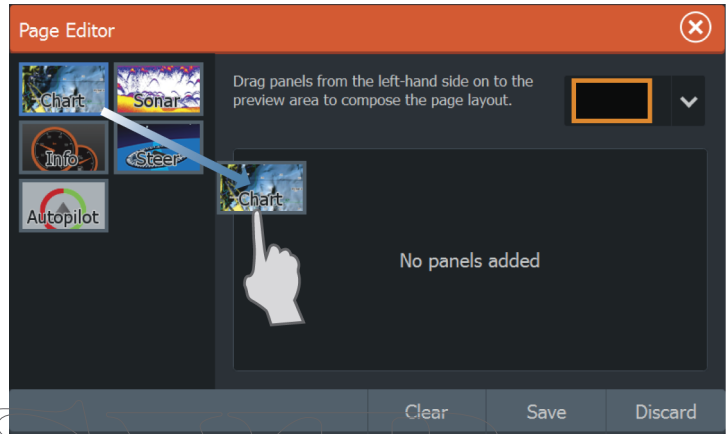
Adding new favorite pages

1. Select the **New** icon in the favorite panel on the **Home** page to open the page editor dialog

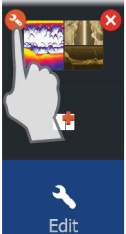


2. Drag and drop page icons to set up a new page
3. Change the panel arrangement (only possible for 2 or 3 panels), if required
4. Save the page layout.

The system displays the new favorite page, and the new page is included in the list of favorite pages on the **Home** page.



Edit favorite pages



1. Select the edit icon in the Favorite panel:
 - Select the X icon on a favorite icon to remove the page
 - Select the tool icon on a favorite icon to display the page editor dialog
2. Add or remove panels in the page editor dialog
3. Save or discard your changes to leave the favorite edit mode.

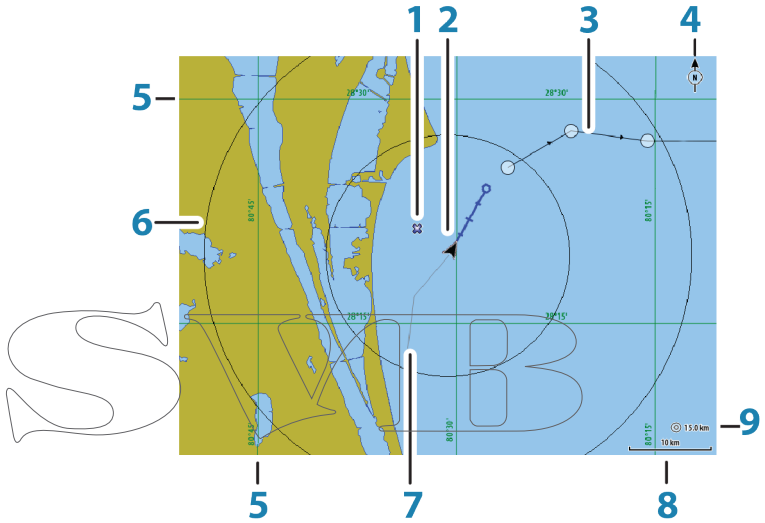
4

Charts

The chart function displays your vessel's position relative to land and other chart objects. On the chart panel you can plan and navigate routes, place waypoints, and display AIS targets.

You can also overlay a StructureScan image.

The Chart panel



- 1 Waypoint*
- 2 Vessel with extension line (extension line is optional)
- 3 Route*
- 4 North indicator
- 5 Grid lines*
- 6 Range rings*
- 7 Trail*
- 8 Chart range scale
- 9 Range rings interval (only displayed when Range rings are turned on)

* Optional chart items. You turn the optional chart items on/off individually from the Chart settings dialog.

Chart data

The system is delivered with different embedded cartography depending on region.

All units support Insight charts from Navico including Insight Genesis. The system also supports charts from Navionics and Jeppesen as well as content created by a variety of third party mapping providers in the AT5 format. For a full selection of available charts, visit gofreeshop.com, c-map.jeppesen.com, or navionics.com.

→ **Note:** In this manual, all possible chart menu options are described. These options vary depending on the chart you are using.

→ **Note:** The system does not automatically switch to embedded cartography if the chart card is removed. A low-resolution chart will be displayed until you re-insert the card or manually switch back to the embedded cartography.

Selecting chart type

You specify the chart type in the Chart panel by selecting one of the available chart types in the chart source menu option.

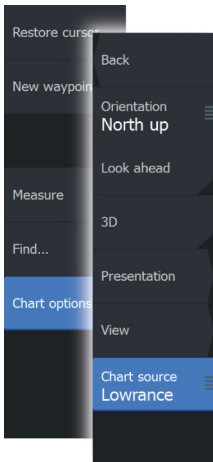
Vessel symbol

When the system has a valid GPS position lock, the vessel symbol indicates vessel position. If no GPS position is available, the vessel symbol includes a question mark.

→ **Note:** Without a heading sensor on the network, the vessel icon orientates itself using COG (Course over Ground).

Chart scale

You zoom in and out on the chart by using the zoom (+ or -) buttons or the + and - keys.



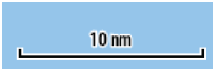


Chart range scale and range rings interval (when turned on) are shown in the lower right corner of the chart panel.

Panning the chart

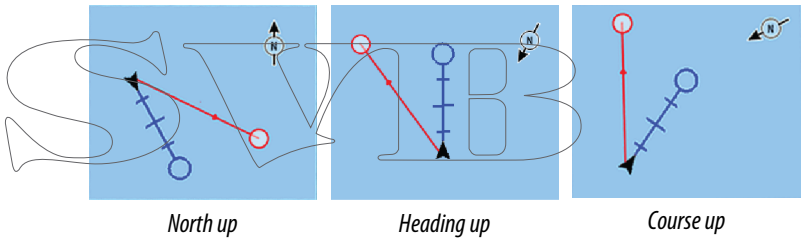
You can move the chart in any direction by dragging your finger on the screen.

Select the **Clear cursor** menu option to remove the cursor and cursor window from the panel. This also centers the chart to the vessel position.

Positioning the vessel on the chart panel

Chart orientation

Several options are available for how the chart is rotated in the panel. The chart orientation symbol in the panel's upper right corner indicates the north direction.



North up

Displays the chart with north upward.

Heading up

Displays the chart with the vessel's heading directed upward. Heading information is received from a compass. If heading is not available, then the COG from the GPS is used.

Course up

Rotates the chart in the direction of the next waypoint when navigating a route or navigating to a waypoint. If not navigating the heading up orientation is used until navigation is started.

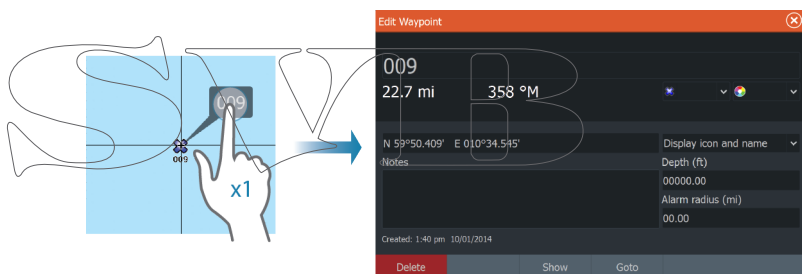
Look ahead

Moves the vessel icon closer to the bottom of the screen so that you can maximize your view ahead.

Displaying information about chart items

When you select a chart item, a waypoint, a route, or a target, basic information for the selected item is displayed. Select the chart item's pop-up to display all available information for that item. You can also activate the detailed information dialog from the menu.

- **Note:** If you are viewing applicable Jeppesen charts on your system, you can select marine objects to display information about services and available multimedia (photos) associated with the location or object.
- **Note:** Pop-up information has to be enabled in chart settings to see basic item information.



Using the cursor on the chart panel

By default, the cursor is not shown on the chart panel.

When you activate the cursor, the cursor position window is displayed. When the cursor is active, the chart does not pan or rotate to follow the vessel.

Select the **Clear cursor** menu option to remove the cursor and the cursor window from the panel. This also centers the chart to the vessel position.

Select the **Restore cursor** menu option to display the cursor in its previous location. The **Clear cursor** and **Restore cursor** options are useful features for toggling between the vessel's current location and the cursor position.

N 59°01.280'
E 13°37.148'
110.5 mi, 104 °M

Creating routes

You can create routes as follows on the chart panel.

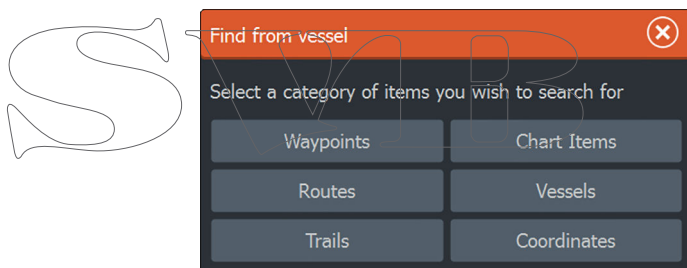
1. Position the cursor on the chart panel
2. Select **New** followed by **New route** in the menu
3. Continue positioning the remaining routepoints
4. Save the route by selecting the save option in the menu.

→ **Note:** For more information, refer to "*Waypoints, Routes, and Trails*" on page 47.

Find objects on chart panels

You can search for other vessels or various chart items from a chart panel.

Activate the cursor on the panel to search from the cursor position. If the cursor is not active, the system searches for items from the vessel's position.



→ **Note:** You must have an AIS receiver connected to search for vessels.

3D charts

The 3D option provides a three dimensional graphical view of land and sea contours.

→ **Note:** All chart types work in 3D mode, but without 3D cartography for the appropriate area the chart appears flat.

When the 3D chart option is selected, the Pan and the Rotate icons appear on the chart panel.



Panning the 3D chart

You can move the chart in any direction by selecting the Pan icon and then panning in the desired direction.

Select the **Return to vessel** menu option to stop panning, and to center the chart to vessel position.



Controlling the view angle

You can control the view angle by selecting the Rotate icon and then panning the chart panel.

- To change the direction you are viewing, pan horizontally
- To change the tilt angle of the view, pan vertically

→ **Note:** When centered on the vessel position, only the tilt angle can be adjusted. The view direction is controlled by the chart orientation setting. See *"Positioning the vessel on the chart panel"* on page 30.

Zooming a 3D chart

You zoom in and out on a 3D chart by using the zoom (+ or -) buttons or by using the + and - keys.

Chart overlay

Structure sonar (StructureMap) information can be displayed as overlay on your chart panel.

When an overlay is selected, the chart menu expands to include basic menu functions for the selected overlay.

For more information about the StructureMap menu functions, refer to *"Structure options"* on page 80.

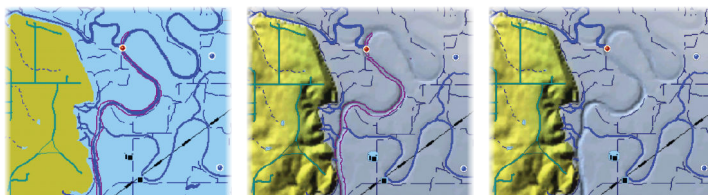
Insight charts

Insight specific chart options

Orientation, Look ahead, 3D, and change Chart source (previously described in this section) are common for all chart types.

Chart imagery style

The charts can be displayed in three imagery styles.



2D mapping style

Shaded relief

No contours

Insight view options

Chart detail

- **Full**
All available information for the chart in use.
- **Medium**
Minimum information sufficient for navigation.
- **Low**
Basic level of information that cannot be removed, and includes information that is required in all geographic areas. It is not intended to be sufficient for safe navigation.

Insight chart categories

Insight charts include several categories and sub-categories that you can turn on/off individually depending on which information you want to see.

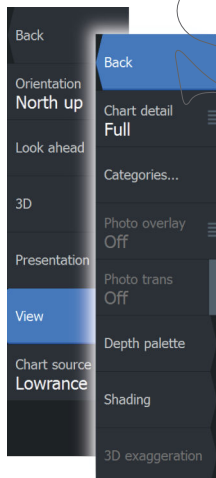
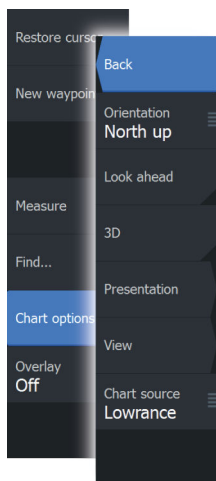


Chart Categories	
▶ Lake Services	ON
▶ Nautical Chart	ON
▶ POI-Other	ON
▶ Political Boundaries	ON
▶ Roads	ON
▶ Topo Boundaries	ON
▶ Water	ON
▶ Water Structure	ON

Land Exaggeration and Water Exaggeration

Graphical settings available in 3D mode only. Exaggeration is a multiplier applied to the drawn height of hills on land, and troughs in water to make them look taller or deeper.

Navionics charts

Navionics specific chart options

Orientation, Look ahead, 3D and change Chart source (previously described in this section) are common for all chart types.

Community edits

Toggles on the chart layer including Navionics edits. These are user information or edits uploaded to Navionics Community by users, and made available in Navionics charts.

For more information, refer to Navionics information included with your chart, or to Navionics website: www.navionics.com.

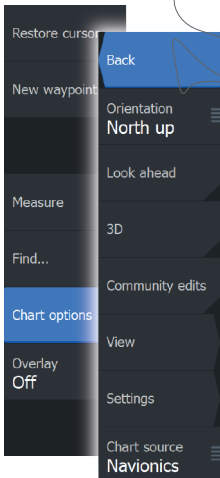
Navionics chart settings

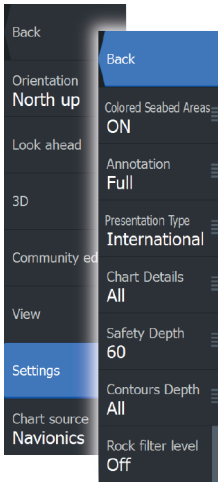
Colored seabed areas

Used for displaying different depth areas in different shades of blue.

Annotation

Determines what area information, such as names of locations and notes of areas, is available to display.





Presentation type

Provides marine charting information such as symbols, colors of the navigation chart and wording for either International or U.S. presentation types.

Chart details

Provides you with different levels of geographical layer information.

Safety depth

The Navionics charts use different shades of blue to distinguish between shallow and deep water.

Safety depth, based on a selected limit, is drawn without blue shading.

→ **Note:** The built in Navionics database features data down to 20 m, after which it is all white.

Contours depth

Determines which contours you see on the chart down to the selected safety depth value.

Rock filter level

Hides rock identification on the chart beneath a given depth.

This helps you to declutter charts in areas where there are many rocks located at depths well below your vessel's draught.

Navionics view options

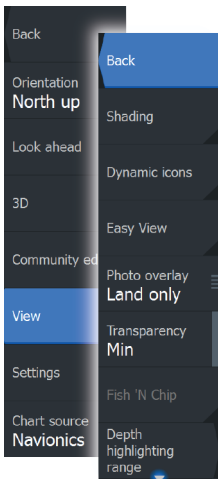
Chart shading

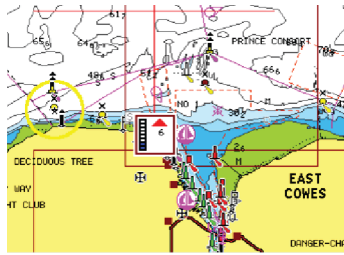
Shading adds terrain information to the chart.

Navionics dynamic tide and current icons

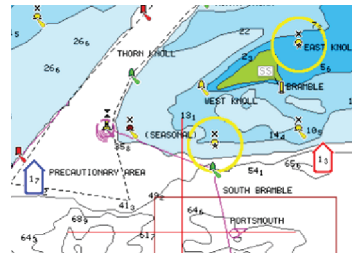
Shows tides and currents with a gauge and an arrow instead of the diamond icons used for static tides and current information.

The tide and current data available in Navionics charts are related to a specific date and time. The system animates the arrows and/or gauges to show the tides and currents evolution over time.





Dynamic tide information



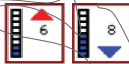
Dynamic current information

The following icons and symbology are used:



Current speed

The arrow length depends on the rate, and the symbol is rotated according to flow direction. Flow rate is shown inside the arrow symbol. The red symbol is used when current speed is increasing, and the blue symbol is used when current speed is decreasing.



Tide height

The gauge has 8 labels and is set according to absolute max/min value of the evaluated day. The red arrow is used when tide is rising, and the blue arrow is used when tide is falling.

→ **Note:** All numeric values are shown in the relevant system units (unit of measurement) set by user.

Easy View

Magnifying feature that increases the size of chart items and text.

→ **Note:** There is no indication on the chart showing that this feature is active.

Photo overlay

Photo overlay enables you to view satellite photo images of an area as an overlay on the chart. The availability of such photos is limited to certain regions, and cartography versions.

You can view photo overlays in either 2D or 3D modes.



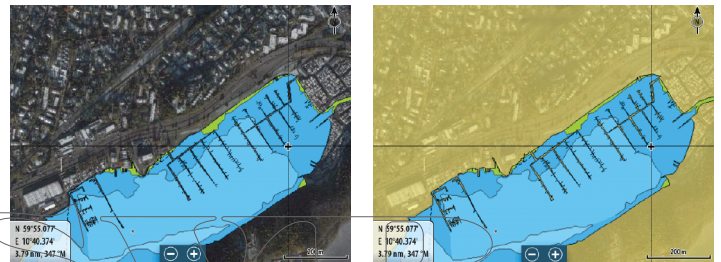
No Photo overlay

Photo overlay, land only

Full Photo overlay

Photo transparency

The Photo transparency sets the opaqueness of the photo overlay. With minimum transparency settings the chart details are almost hidden by the photo.



Minimum transparency

Maximum transparency

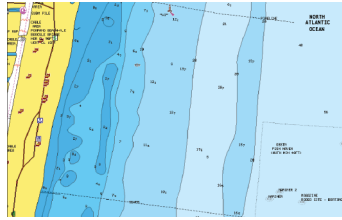
Navionics Fish N' Chip

The system supports Navionics Fish N' Chip (U.S. only) chart feature. For more information, see www.navionics.com.

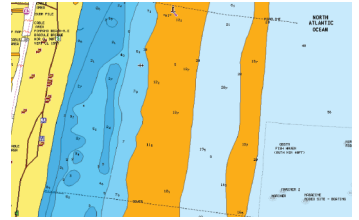
Depth highlight range

Select a range of depths between which Navionics fills with a different color.

This allows you to highlight a specific range of depths for fishing purposes. The range is only as accurate as the underlying chart data, meaning that if the chart only contains 5 meter intervals for contour lines, the shading is rounded to the nearest available contour line.



No Depth highlight range

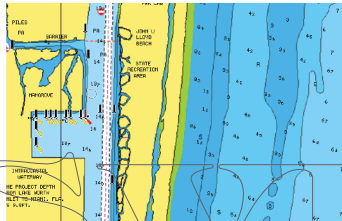


Depth highlight range: 6 m - 12 m

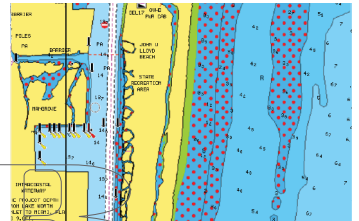
Shallow water highlight

Highlights areas of shallow water.

This allows you to highlight areas of water between 0 and the selected depth (up to 10 meters/30 feet).



No shallow water highlighted



Shallow water highlight: 0 m - 3 m

Jeppesen charts

All possible menu options for Jeppesen charts are described below. The Jeppesen features and menu options can vary depending on the Jeppesen charts you use.

Jeppesen tides and currents

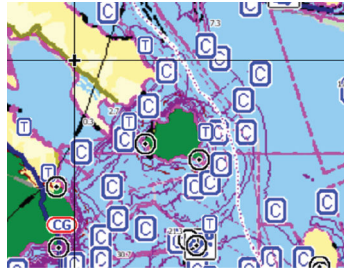
The system can display Jeppesen tides and currents. With this information it is possible to predict the time, level, direction and strength of currents and tides. This is an important tool when considering planning and navigation of a trip.

In large zoom ranges the tides and currents are displayed as a square icon including the letter **T** (Tides) or **C** (Current). When you select one of the icons, tidal or current information for that location are displayed.

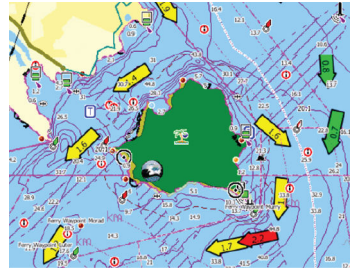
Dynamic current data can be viewed by zooming inside a 1-nautical mile zoom range. At that range, the Current icon changes to an

animated dynamic icon that shows the speed and direction of the current. Dynamic icons are colored in black (greater than 6 knots), red (greater than 2 knots and less than or equal to 6 knots), yellow (greater than 1 knot and less than or equal to 2 knots) or green (equal to or less than 1 knot), depending on the current in that location.

If there is no current (0 knots) this will be shown as a white, square icon.



Static Current and Tide icons



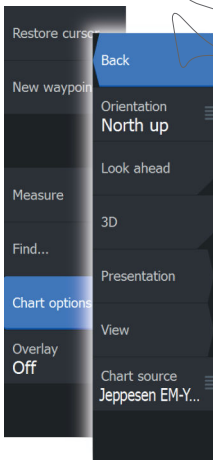
Dynamic Current icons

Jeppesen specific chart options

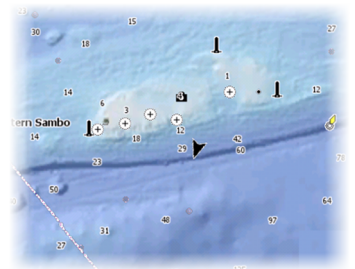
Orientation, Look ahead, 3D, and change Chart source (previously described in this section) are common for all chart types.

Presentation

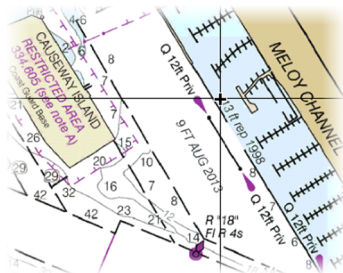
The charts can be displayed in different imagery styles.



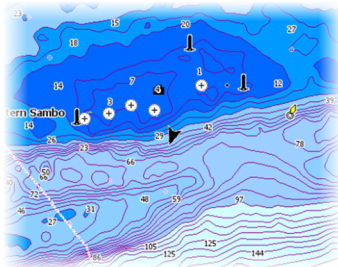
Shaded relief



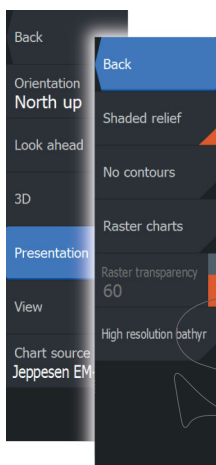
No contours



Raster imagery



High resolution bathymetry



Shaded relief

Shades seabed terrain.

No contours

Removes contour lines from the chart.

Raster charts

Changes the view to that of a traditional paper chart.

Raster transparency

Controls the transparency of raster imagery.

High resolution bathymetry

Enables and disables higher concentration of contour lines.

Jeppesen view options

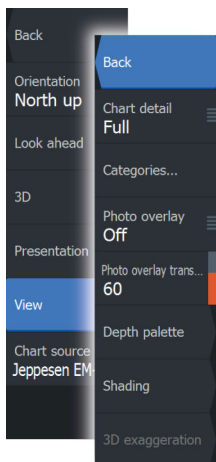


Chart detail

- **Full**
All available information for the chart in use.
- **Medium**
Minimum information sufficient for navigation.
- **Low**
Basic level of information that cannot be removed, and includes information that is required in all geographic areas. It is not intended to be sufficient for safe navigation.

Jeppesen chart categories

Jeppesen charts include several categories and sub-categories that you can turn on/off individually depending on which information you want to see.

Photo overlay

Photo overlay enables you to view satellite photo images of an area as an overlay on the chart. The availability of such photos is limited to certain regions, and cartography versions.

You can view photo overlays in either 2D or 3D modes.



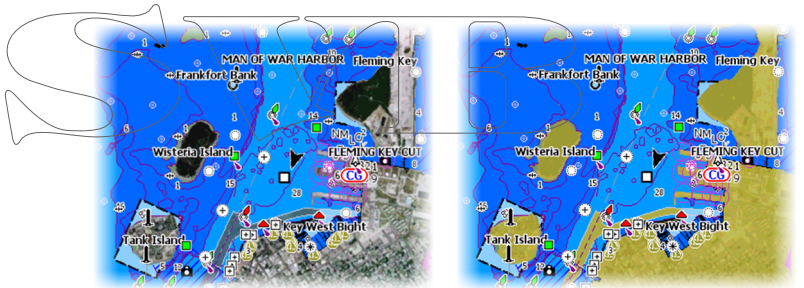
No Photo overlay

Photo overlay, land only

Full Photo overlay

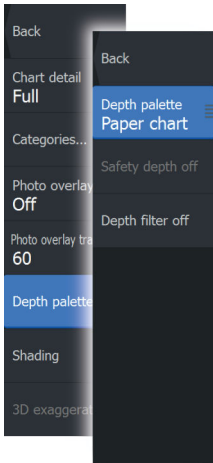
Photo transparency

The Photo transparency sets the opaqueness of the photo overlay. With minimum transparency settings the chart details are almost hidden by the photo.



Minimum transparency

Transparency at 80



Depth palette

Controls the Depth palette used on the map.

Paper chart

Changes the appearance of the map to a paper chart style.

Safety depth

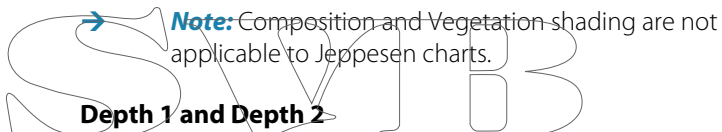
Jeppesen charts use different shades of blue to distinguish between shallow (lighter shades) and deep (darker shades) water. After enabling Safety depth, specify the desired safety depth limit. The Safety depth sets the limit at which depths will be drawn without blue shading.

Depth filter

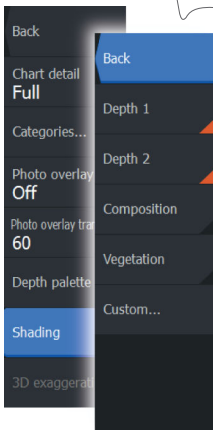
Filters out depth values shallower than the selected depth filter limit.

Shading

Shades different areas of the seabed, depending on the selected Shading category.



Depth presets that shade different depths in different colors.



Custom

You can adjust the depth threshold, color and opacity (transparency) of color shading for Depth 1 and Depth 2.

Custom Shading		
Depth 1	Depth 2	Vegetation
Depth (m)	Color	Opacity (%)
0		100
12		100
24		100
37		100
49		100
61		100
73		100

3D exaggeration

Graphical settings that are available in 3D mode only. Exaggeration is a multiplier applied to the drawn height of hills on land, and troughs in water to make them look taller or deeper.

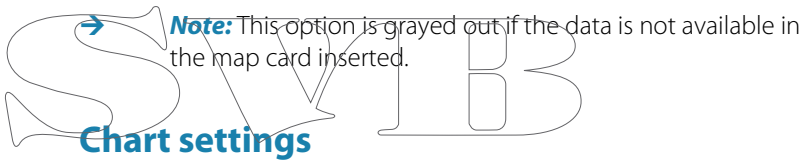
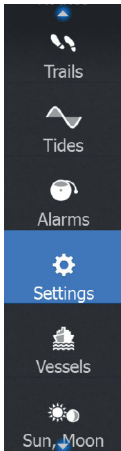


Chart settings

Settings and display options made in the Chart settings page are common for all chart panels.



Settings	
System	3D boat selection Sail boat
Navigation	Boat settings...
Chart	Range rings <input type="checkbox"/> OFF
Sonar	Heading extension <input checked="" type="checkbox"/> ON
Fuel	Course extension <input checked="" type="checkbox"/> ON
Alarms	Extension length 2 min
Units	Synchronize 2D/3D chart <input type="checkbox"/> OFF
Wireless	Popup information <input checked="" type="checkbox"/> ON
Network	Grid lines <input type="checkbox"/> OFF
	Waypoints <input checked="" type="checkbox"/> ON
	Routes <input checked="" type="checkbox"/> ON

3D boat selection

Determines which icon to use on 3D charts.

Boat settings

Not used.

Range Rings

The range rings can be used to present the distance from your vessel to other chart objects.

The range scale is set automatically by the system to suit the chart scale.

Extension lines

Sets the lengths of the heading and course extension lines for your vessel. For setting extension line lengths on other vessels shown as AIS targets, refer to AIS "*Course extension lines*" on page 104 lines.

A: Heading

B: Course Over Ground (COG)

The lengths of the extension lines are either set as a fixed distance, or to indicate the distance the vessel moves in the selected time period. If no options are turned on for the vessel then no extension lines are shown for your vessel.

Your vessel heading is based on information from the active heading sensor and the COG is based on information from the active GPS sensor.

Synchronize 2D/3D chart

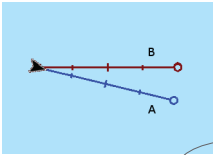
Links the position shown on one chart with the position shown on the other chart when a 2D and a 3D chart are shown side by side.

Pop-up information

Selects whether basic information for chart items is displayed when you select the item.

Grid lines

Turns on/off viewing of longitude and latitude grid lines on the chart.

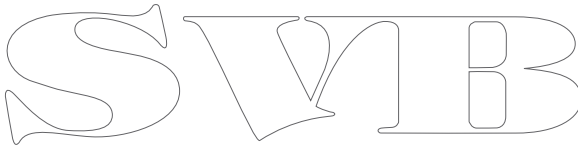


Hide chart

If the option is set to ON when viewing a Lowrance chart, the chart (background) is not displayed and only the vessel, extensions, waypoints, and routes are displayed on a white background.

Waypoints, Routes, Trails

Turns on/off displaying of these items on chart panels. Also opens the Waypoints, Routes and Trails dialogs you can use to manage them.



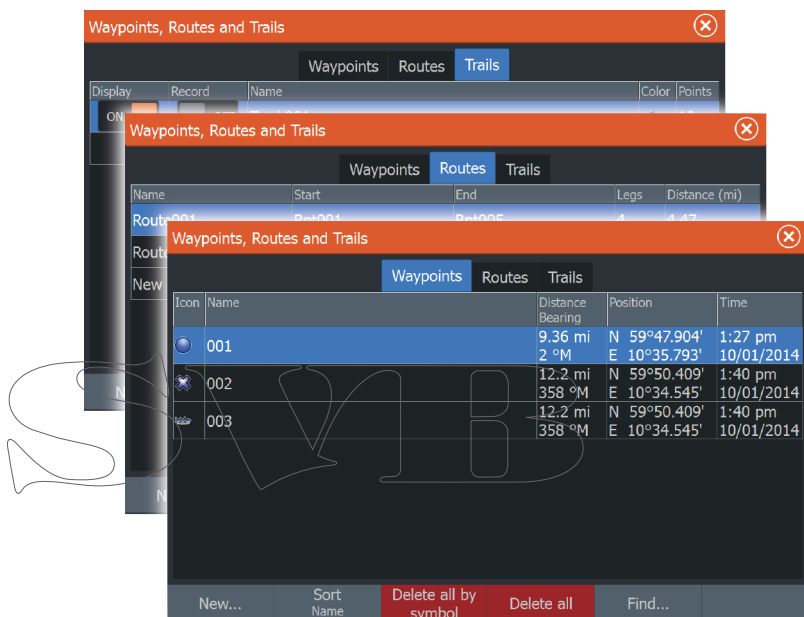
5

Waypoints, Routes, and Trails

Waypoints, Routes, and Trails dialogs

The Waypoints, Routes, and Trails dialogs give access to advanced edit functions and settings for these items.

The dialogs are accessed from the **Tools panel** on the **Home** page.

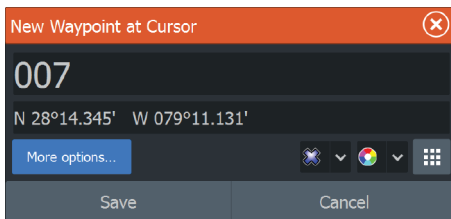
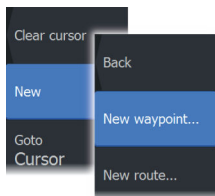


Waypoints

A waypoint is a user generated mark positioned on a chart, or on the Sonar image. Each waypoint has an exact position with latitude and longitude coordinates. A waypoint positioned on the Sonar image has a depth value, in addition to position information. A waypoint is used to mark a position you later may want to return to. Two or more waypoints can also be combined to create a route.

Saving waypoints

You can save a waypoint at a selected location by positioning the cursor on the panel, and then selecting the new waypoint option in the menu.



You can also save a waypoint by pressing the Waypoint key:

- Press once to display the New Waypoint dialog
- Press twice to quickly save a waypoint. If the cursor is active, the waypoint is saved at the cursor position. If the cursor is not active, the waypoint is saved at your vessel's position.

Moving a waypoint

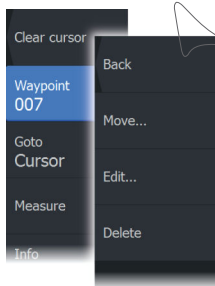
1. Select the waypoint you want to move. The waypoint icon expands to indicate that it is active.
2. Activate the menu and select the waypoint in the menu
3. Select the move option
4. Select the new waypoint position
5. Select Finish in the menu.

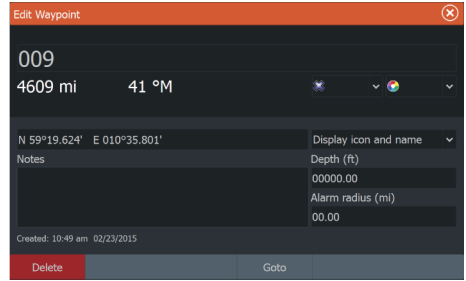
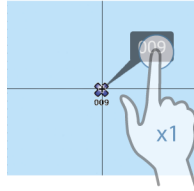
The waypoint is now automatically saved at the new position.

Edit a waypoint

You can edit all information about a waypoint from the **Edit Waypoint** dialog.

The dialog can also be accessed from the Waypoints tool on the **Home** page.





Delete a waypoint

You can delete a waypoint from the **Edit Waypoint** dialog or by selecting the **Delete** menu option when the waypoint is activated.

You can also delete waypoints from the Waypoints tool on the **Home** page.

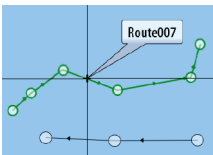
You can delete MOB waypoints the same way.

Waypoint alarm settings

You can set an alarm radius for each individual waypoint you create. The alarm is set in the **Edit Waypoint** dialog.

→ **Note:** The waypoint radius alarm must be toggled ON in the alarm dialog to activate an alarm when your vessel comes within the defined radius. For more information, refer to "Alarms dialog" on page 106.

Routes



A route consists of a series of routepoints entered in the order that you want to navigate them.

When you select a route on the chart panel it turns green, and the route name is displayed.

Creating a new route on the chart panel

1. Activate the cursor on the chart panel
2. Select the new route option from the menu
3. Position the first waypoint on the chart panel
4. Continue positioning new routepoints on the chart panel until the route is completed
5. Save the route by selecting the save option in the menu.

Edit a route from the chart panel

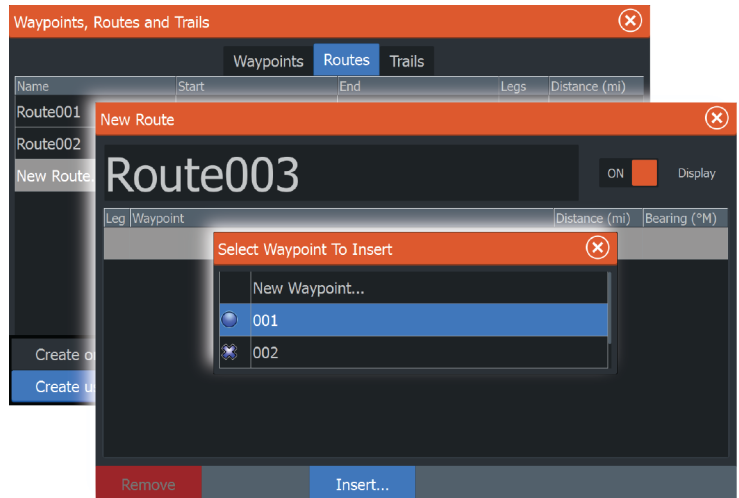
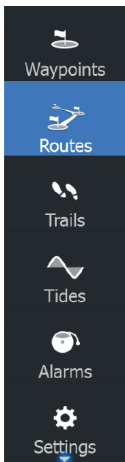
1. Select the route to make it active.
 2. Select the route edit option in the menu.
 3. Position the new routepoint on the chart panel:
 - If you set the new routepoint on a leg, a new point is added between existing routepoints.
 - If you set the new routepoint outside the route, the new routepoint is added after the last point in the route.
 4. Drag a routepoint to move it to a new position.
 5. Save the route by selecting the save option in the menu.
- **Note:** The menu changes depending on the selected edit option. All edits are confirmed or cancelled from the menu.

Delete a route

You can delete a route by selecting the **Delete** menu option when the route is activated. You can also delete routes from the Routes tool on the **Home** page.

Creating routes using existing waypoints

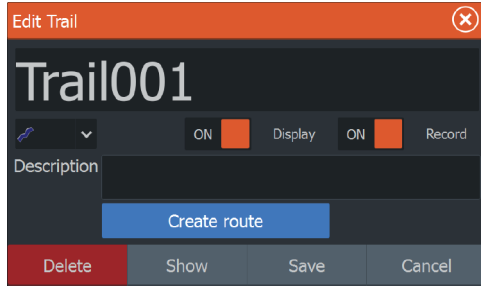
You can create a new route by combining existing waypoints from the **Routes** dialog. The dialog is activated by using the **Routes** tool on the **Home** page.



Converting Trails to Routes

You can convert a trail to a route from the Edit Trail dialog. The dialog is activated by activating the trail, then selecting the trail's pop-up, or the **Trail** menu option.

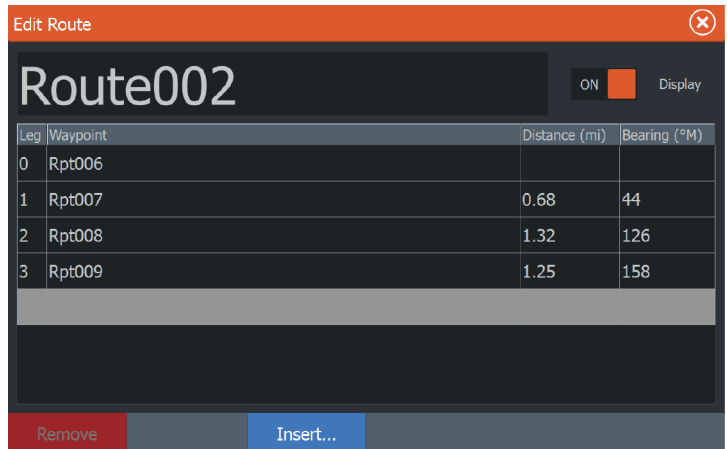
The Edit Trails dialog can also be accessed by selecting the Trails tool on the **Home** page.



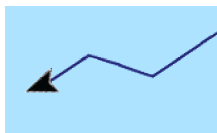
The Edit Route dialog

You can add and remove routepoints from the **Edit Route** dialog. This dialog is activated by selecting an active route's pop-up or from the menu.

The dialog can also be accessed by using the **Routes** tool on the **Home** page.



Trails



Trails are a graphical presentation of the historical path of the vessel, allowing you to retrace where you have travelled. Trails can be converted to routes from the **Edit** dialog.

From the factory, the system is set to automatically track and draw the vessel's movement on the chart panel. The system continues to record the Trails until the length reaches the maximum points, and then automatically begins overwriting the oldest points.

The automatic tracking function can be turned off from the Trails dialog.

Creating new Trails

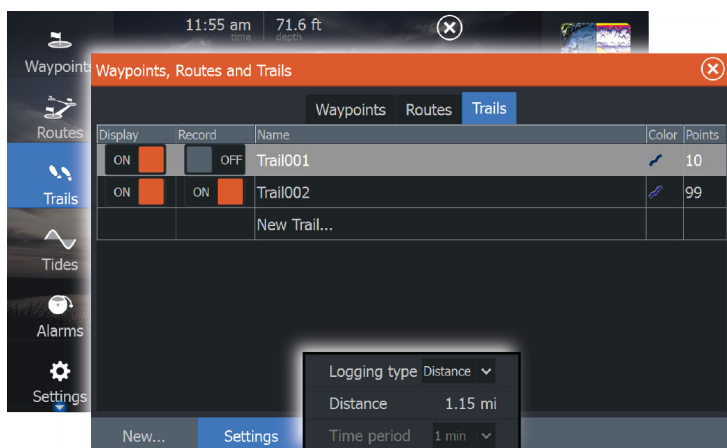
You can start a new trail from the **Trails** dialog, activated by using the **Trails** tool on the **Home** page.

Trails settings

Trails are made up of a series of points connected by line segments whose length depends on the frequency of the recording.

You can select to position trail points based on time settings, distance, or by letting the system position a waypoint automatically when a course change is registered.

→ **Note:** The Trails option must also be turned ON in the chart settings to be visible.



6

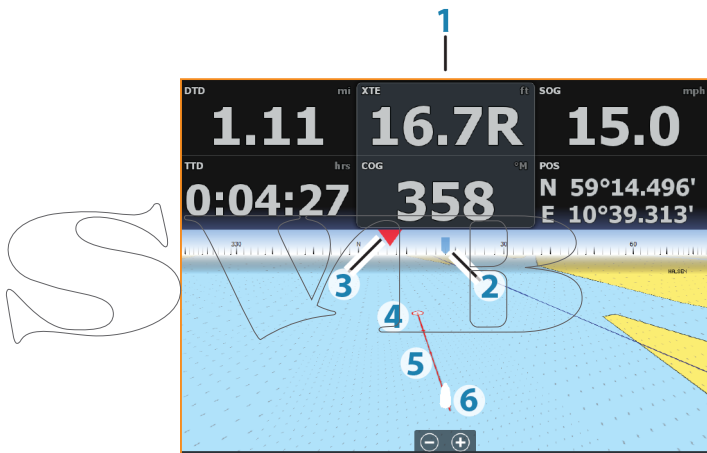
Navigating

The navigation function included in the system allows you to navigate to the cursor position, to a waypoint, or along a predefined route.

If autopilot functionality is included in your system, the autopilot can be set to automatically navigate the vessel.

For information about positioning waypoints and creating routes, refer to "*Waypoints, Routes, and Trails*" on page 47.

Steer panel



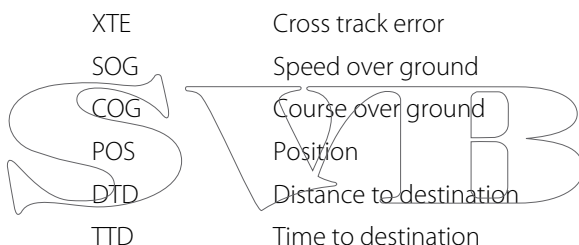
The Steer panel can be used to display information when you are navigating. It is activated from the **Home** page, either as a full page panel or as part of a multiple panel page.

- 1 Data fields
- 2 Vessel heading
- 3 Bearing to waypoint
- 4 Destination point

- 5 Bearing line with allowed off course limit
When travelling on a route the bearing line shows the intended course from one waypoint towards the next. When navigating towards a waypoint (cursor position, MOB, or an entered latitude and longitude position), the bearing line shows the intended course from the point at which navigation was started towards the waypoint.
- 6 Vessel symbol
Indicates distance and bearing relative to the intended course. If the XTE (Cross Track Error) exceeds the defined XTE limit, this is indicated with a red arrow including the distance from the track line.

Data Fields

The Steer panel provides the following information:



Navigate to cursor position

Position the cursor at the selected destination on the panel, and then select the **Goto Cursor** option in the menu.

→ **Note:** The **Goto Cursor** menu option is not available if you are already navigating.

Navigate a route

When route navigation is started, the menu expands and shows options for canceling the navigation, for skipping a waypoint, and for restarting the route from current vessel position.

Starting a route from the chart panel

Activate a route on the panel, and then select the route navigation option from the menu.

You can select a routepoint to start navigating from a selected position.

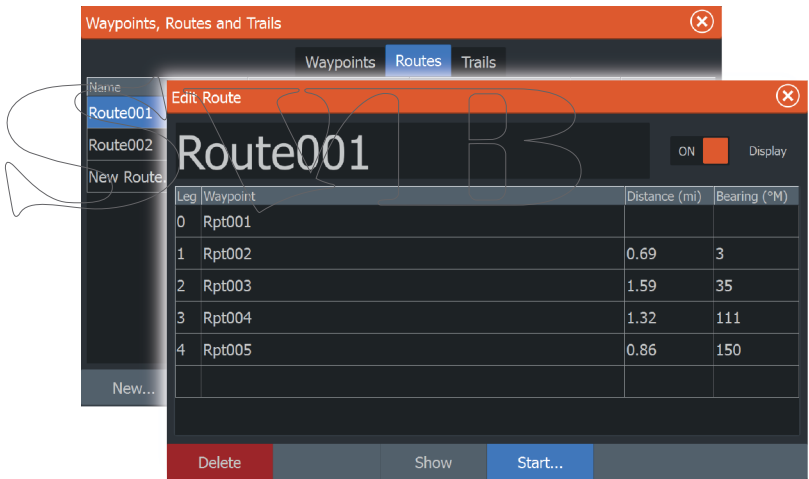
Starting a route from the steer panel

Select the start route option on the menu, and then details from the dialogs.

Start navigating a route from the Route dialog

You can start navigating from the **Route** dialog, activated by:

- Selecting the **Route** tool from the **Home** page
- Selecting the route details from the menu



Navigating with the autopilot

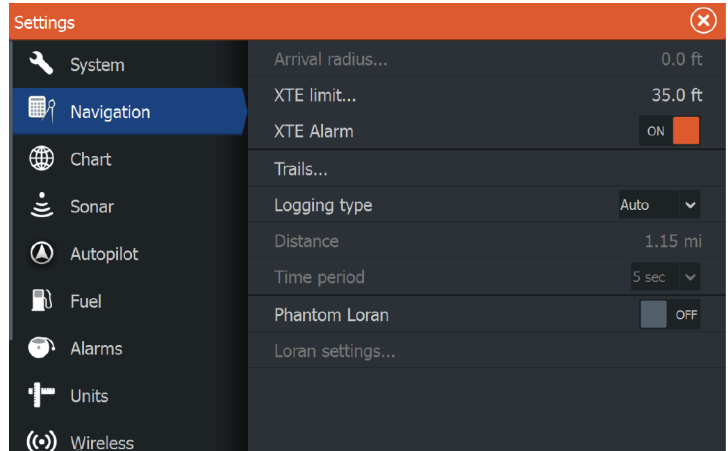
Navigating with the autopilot is available with the ELITE-7Ti only.

When you start navigation on a system with autopilot functionality, you are prompted to set the autopilot to navigation mode.

If you choose not to engage the autopilot, the autopilot can be set to navigation mode from the Autopilot Controller later on.

For more information about autopilot functionality, refer to "Autopilot" on page 84.

Navigation settings



Arrival radius

Sets an invisible circle around the destination waypoint.

The vessel is considered arrived at the waypoint when it is within this radius.

XTE limit

This setting defines how far the vessel can deviate from the selected route, if the vessel goes beyond this limit, an alarm is activated.

XTE alarm (Cross track error)

Turns on/off the XTE alarm.

Trails

Opens the **Trails** dialog where trails settings can be adjusted and trails can be converted into routes for navigation. Refer to "Converting Trails to Routes" on page 51.

Logging type

You can select to record trail points based on time, distance, or by letting the unit position a point automatically when a course change is registered.

Specify one of the following logging types in the Navigating Settings dialog:

- **Auto** - the unit positions a point automatically when a course change is registered.
- **Distance** - select the Distance field and enter the distance you want to record.
- **Time** - select the Time field and enter the time you want to record.

Phantom Loran

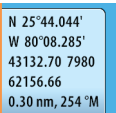
Enables use of Phantom Loran positioning system.

Loran settings

Defines Loran chains (GRI) and preferred station for waypoint entry, cursor position and position panel.

The graphic example shows a cursor position window with Loran position information.

For more information refer to your Loran system documentation.



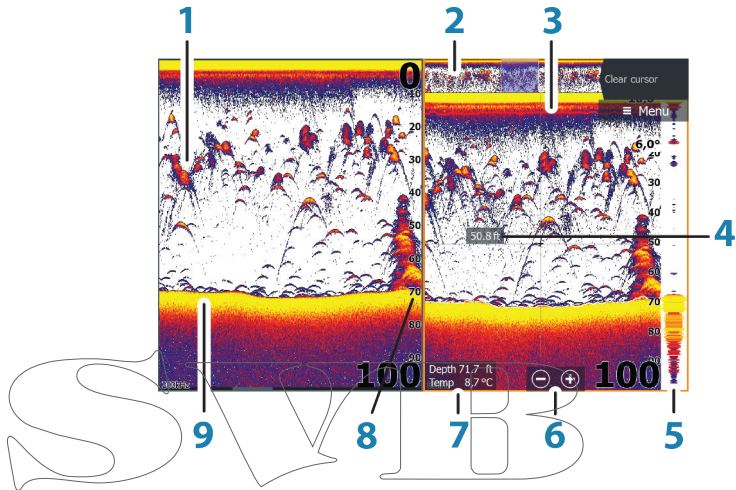
N 25°44.044'
W 80°08.285'
43132.70 7980
62156.66
0.30 nm, 254 °M

7

Sonar

The Sonar function provides a view of the water and bottom beneath your vessel, allowing you to detect fish and examine the structure of the sea floor.

The Sonar image



- 1 Fish arches
- 2 History preview*
- 3 Temperature graph*
- 4 Depth at cursor
- 5 Amplitude scope*
- 6 Zoom (range) buttons
- 7 Water depth and Water temperature at cursor location
- 8 Range scale
- 9 Bottom

* Optional Sonar items that you turn on/off individually.

Zooming the image

You can zoom the image by:

- using the zoom (+ or -) buttons
- using the +/- keys

Zoom level is shown on the bottom left side of the image.

When zooming in, the sea floor is kept near the bottom of the screen, irrespective of whether it is in auto-range or manual range.

If the range is set considerably less than the actual depth, the unit is not able to find the bottom when zooming.

If the cursor is active, the unit zooms in where the cursor is pointed.

Zoom bar

The zoom bar is displayed when you zoom the image.

Drag the zoom bar vertically to view different parts of the water column.

Using the cursor on the image

The cursor can be used to measure a distance to a target, to mark a position, and to select targets.

By default, the cursor is not shown on the image.

When you position the cursor on the image; the screen pauses, the depth at the cursor position is shown, and the information window and the history bar are activated.

To remove the cursor and cursor elements from the panel, select the **Clear cursor** menu option.

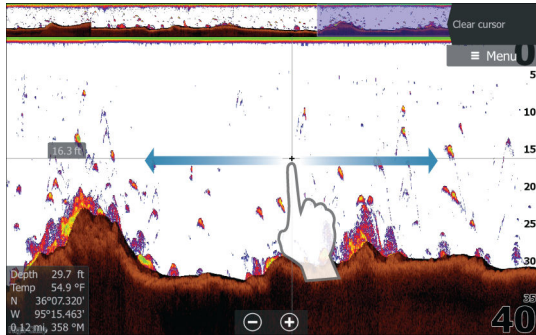
Viewing history

Whenever the cursor is shown on the Sonar panel, the scroll bar is shown at the top of the panel. The scroll bar shows the image you are currently viewing in relation to the total Sonar image history stored.

If the scroll bar is on the far right side, it indicates that you are viewing the latest soundings. If you position the cursor to the left side of the screen, the history bar starts scrolling towards the left, and the automatic scrolling as new soundings are received is turned off.

You can view sonar history by panning the image. You can also use the preview feature to pan history, refer to *"Preview"* on page 67.

To resume normal scrolling, select the **Clear cursor** menu option.



Setting up the image

Use the Sonar menu options to set up the image. When the cursor is active, some options on the Sonar menu are replaced with cursor mode features. Select **Clear cursor** to return to the normal Sonar menu.

The range

The range setting determines the water depth that is visible on the screen.

Auto range

By default, the range is set to Auto. With Auto, the system automatically displays the whole range from the water surface to the bottom. Auto is the preferred setting for most fish finding sonar use.

Preset range levels

Allows for the selection of a specific depth range that is not tied to the depth of the water.

Custom range

This option allows you to manually set both upper and lower range limits.

- **Note:** Setting a custom range puts the sonar in manual mode. If the bottom is well beyond the lower range set, you may lose digital depth.

Frequency

The unit supports several transducer frequencies. Available frequencies depend on the transducer model that is connected.

- **Note:** This unit cannot operate CHIRP frequencies and SideScan at the same time. If you turn on StructureScan Left/Right view, you will not be able to use the CHIRP sonar.

You can view two frequencies at the same time by selecting dual Sonar panels from the **Home** page.

Sensitivity

Increasing Sensitivity shows more detail on the screen. Decreasing Sensitivity displays less. Too much detail clutters the screen. Conversely, desired echoes may not be displayed if Sensitivity is set too low.

- **Note:** Auto Sensitivity is the preferred mode for most conditions.

Auto sensitivity

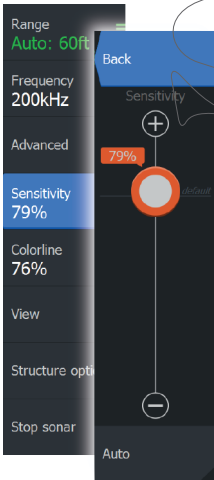
Auto sensitivity automatically adjusts the sonar return to the optimal levels. Auto sensitivity can be adjusted (+/-) to your preference while still maintaining the auto sensitivity functionality.

Colorline

Allows the user to adjust the colors of the display to help differentiate softer targets from harder ones. Adjusting the Colorline can help separate fish and important structures on or near the bottom from the actual bottom.

Adjusting Sensitivity and Colorline

Select the Sensitivity or Colorline menu options in the Sonar menu and adjust them by dragging the bar vertically up/down. Minor adjustments can be made by tapping on the top or bottom of the slider bar.

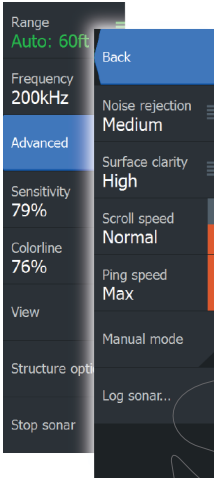


Stop sonar

Select the **Stop sonar** menu option to stop the sonar from pinging. Use the stop sonar option anytime you want to disable the sonar but not power off the unit.

Advanced options

The Advanced option is only available when the cursor is not active.



Noise rejection

Signal interference from bilge pumps, engine vibration and air bubbles can clutter the image.

The noise rejection option filters the signal interference and reduces the on-screen clutter.

Surface clarity

Wave action, boat wakes, and temperature inversion can cause onscreen clutter near the surface. The surface clarity option reduces surface clutter by decreasing the sensitivity of the receiver near the surface.

Scroll speed

You can select the scrolling speed of the image on the screen. A high scroll speed updates the image fast, while a low scroll speed presents a longer history.

→ **Note:** In certain conditions it may be necessary to adjust the scroll speed to get a more useful image. Such as adjusting the image to a faster speed when vertically fishing without moving.

Ping speed

Ping speed controls the rate the transducer transmits the Sonar signal into the water. By default, the ping speed is set to max. It may be necessary to adjust the ping speed to limit interference or to adjust for specific fishing conditions.

Manual mode

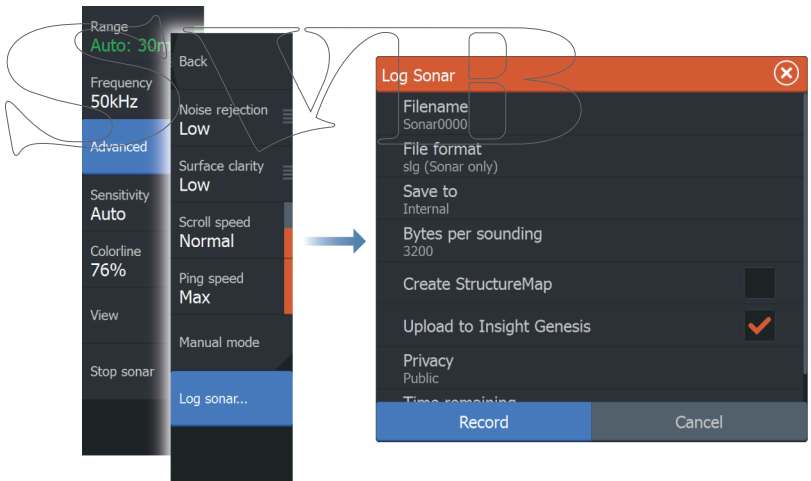
Manual mode is an advanced user mode that restricts digital depth capability, so the unit only sends sonar signals to the user selected depth range. This allows the display to continue smooth scrolling if the bottom depth is out of transducer range. When the unit is in manual mode, you might not receive any depth readings, or you might receive incorrect depth information.

Start recording log data

You can start recording log data and save the file internally in the unit, or save it onto a card inserted into the unit's card reader.

The **Log sonar** dialog is activated from the **Advanced** menu option, or from the **Sonar Settings** dialog.

When the data is being recorded, there is a flashing red symbol in the top left corner and a message appears periodically at the bottom of the screen.



Filename

Specify the name of the recording (log).

File format

Select a file format from the drop-down, slg (Sonar only), xtf (DownScan only*), or sl2 (Sonar and DownScan).

→ **Note:** XTF format is for use only with select 3rd party Sonar viewing tools.

Save to

Select whether the recording is to be saved internally or to a memory card in the card reader.

Bytes per sounding

Select how many bytes per seconds that are to be used when saving the log file. More bytes yield better resolution, but cause the record file to increase in size compared to using lower byte settings.

Create StructureMap

If StructureScan is available on the network, you can convert the .sl2 logs to StructureMap format (.smf) when recording completes. The log file can also be converted to StructureMap format from the Files option.

Upload to Insight Genesis

Files are transmitted to Insight Genesis when recording completes, if you are connected to a wireless hotspot. For information about wireless hotspots, refer to "*Wireless connection*" on page 92.

Privacy

If allowed by your selected Insight Genesis account, you can choose between setting the recorded log files as Private or Public at Insight Genesis.

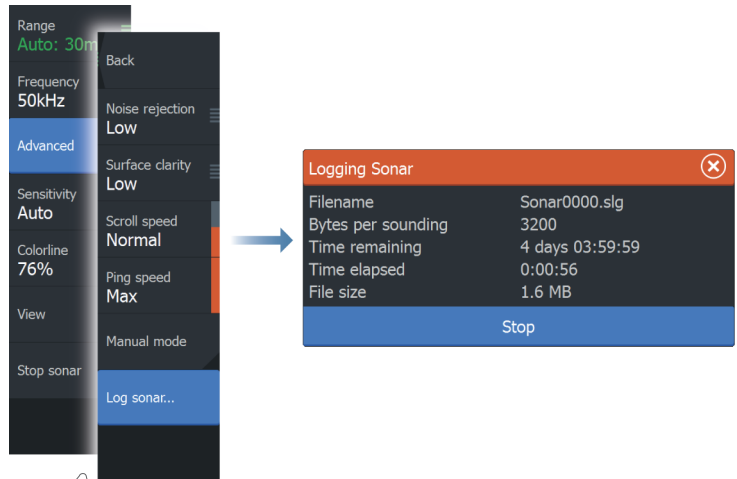
Time remaining

Shows the remaining allocated space available for recordings.

Stop recording log data

Select **Stop** in the Logging Sonar dialog to fully stop the recording of all sonar log data.

→ **Note:** If you have selected the **Upload to Insight Genesis** option and are connected to a wireless hotspot, your recorded files are transmitted to Insight Genesis when you select **Stop**.



Viewing the recorded sounder data

Both internally and externally stored sounder records may be reviewed when the view sonar log option is selected in the Sonar settings dialog. Refer to "*Sonar settings*" on page 68.

The log file is displayed as a paused image, and you control the scrolling and display from the replay menu option.

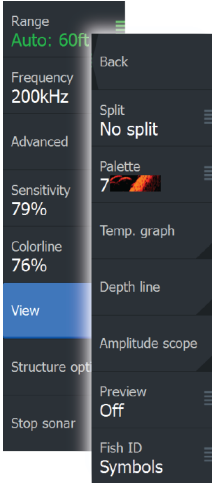
You can use the cursor on the replay image, and pan the image as on a normal echo image.

If more than one channel was recorded in the selected echo file, you can select which channel to display.

You exit the replay mode by selecting the **X** symbol in the upper right corner of the replay image.

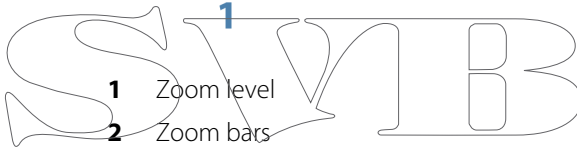
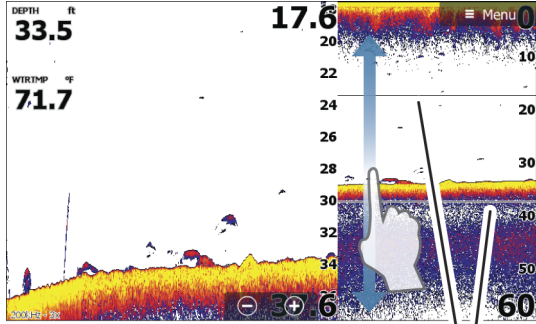
Sonar view options

Select the View option in the Sonar menu to see View options.



Split screen options

Zoom



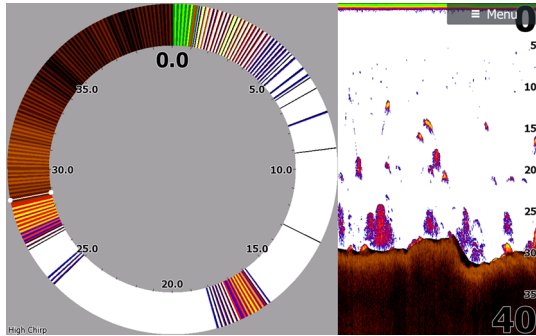
The Zoom mode presents a magnified view of the sounder image on the left side of the panel. By default the zoom level is set to 2x. You can select up to 8x zoom from the drop-down menu, using the +/- keys, or the zoom (+ or -) buttons. The range zoom bars on the right side of the display shows the range that is magnified. If you increase the zooming factor the range is reduced. You see this as reduced distance between the zoom bars.

Bottom lock

The bottom lock mode is useful when you want to view echoes close to the bottom. In this mode, the left side of the panel shows an image where the bottom is flattened. The range scale is changed to measure from the seabed (0) and upwards. The bottom and the zero line are always shown on the left image, independent of the range scale. The scaling factor for the image on the left side of the panel is adjusted as described for the Zoom option.

Flasher

The Flasher mode shows a flasher-style sonar view in the left panel and a normal sonar view in the right panel.



Palettes

You can select between several display palettes optimized for a variety of fishing conditions.

Temperature graph

The temperature graph is used to illustrate changes in water temperature.

When toggled on, a colored line and temperature digits are shown on the Sonar image.

Depth line

A depth line can be added to the bottom surface to make it easier to distinguish the bottom from fish and structures.

Amplitude scope

The Amplitude scope is a display of real-time echoes as they appear on the panel. The strength of the actual echo is indicated by both width and color intensity.

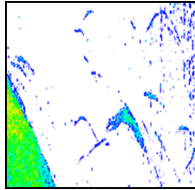
Preview

You can have all available sonar history shown at the top of the sonar screen. The Preview bar is a snapshot of available sonar history. You can scroll through sonar history by dragging the

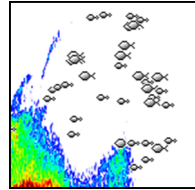
preview slider horizontally. By default, Preview is turned on when the cursor is active.

Fish ID

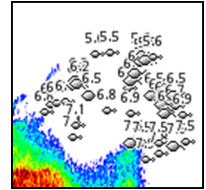
You can select how you want the echoes to appear on the screen. You can also select if you want to be notified by a beep when a fish ID appears on the panel.



Traditional fish echoes

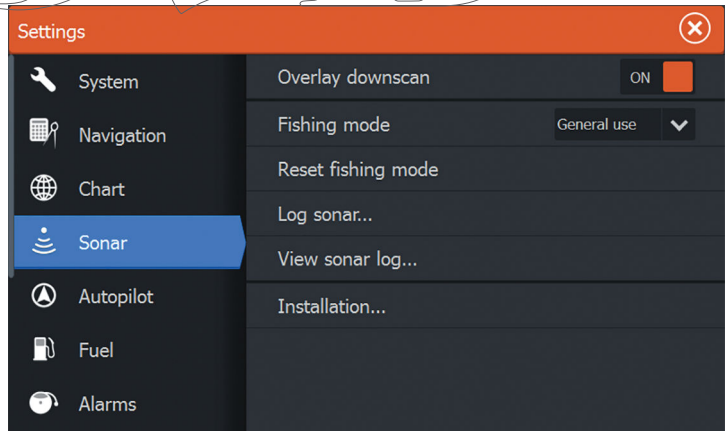


Fish symbols



Fish symbols and depth indication

→ **Note:** Not all fish symbols are actual fish.



Overlay downscan

When a DownScan source is connected to your system, you can overlay DownScan images on the regular Sonar image.

When activated, the Sonar menu expands to include basic DownScan options.

Select Overlay on the Structure options menu to adjust the level of structure overlay shown on the screen. You can make adjustments using the Overlay slider bar.

Fishing mode

This feature consists of preset packages of sonar settings designed for specific fishing conditions.

→ **Note:** Selecting the proper fishing mode is critical to optimal sonar performance. If you completed configuration setup at initial startup, the proper fishing mode has already been selected.

Fishing mode	Depth	Palette
General Use	≤ 1,000 ft	White background
Shallow Water	≤ 60 ft	White background
Fresh Water	≤ 400 ft	White background
Deep Water	≤ 5,000 ft	Deep Blue
Slow Trolling	≤ 400 ft	White background
Fast Trolling	≤ 400 ft	White background
Clear Water	≤ 400 ft	White background
Ice Fishing	≤ 400 ft	White background

Reset fishing mode

Resets selected fishing mode to default settings, allowing you to clear settings adjustments made while using a fishing mode.

Log sonar

Select to start and stop recording of Sonar data. For more information, refer to *"Start recording log data"* on page 63.

This option is also available from the Advanced option in the Sonar menu.

View Sonar log

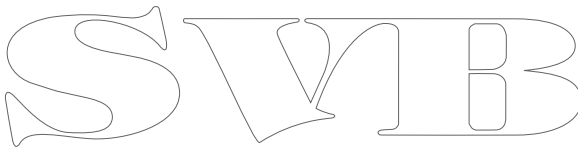
Used to view Sonar recordings. The log file is displayed as a paused image, and you control the scrolling and display from the menu.

You can use the cursor on the image, measure distance, and set view options as on a live Sonar image. If more than one channel was recorded in the selected Sonar file, you can select which channel to display.

You exit the view function by selecting the **X** in the upper right corner.

Installation

Used for installation and setup. See the separate ELITE Ti Installation manual.



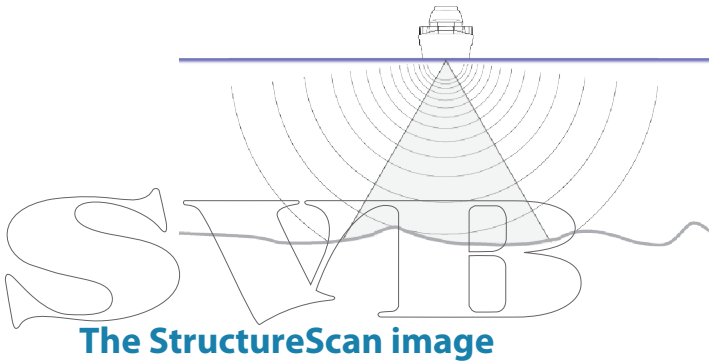
8

StructureScan

StructureScan HD uses high frequencies to provide a high resolution, picture-like image of the seabed.

StructureScan HD provides a wide coverage in high detail with SideScan, while DownScan provides detailed images of structure and fish directly below your boat. The StructureScan page is accessed from the **Home** page when the TotalScan transducer is connected.

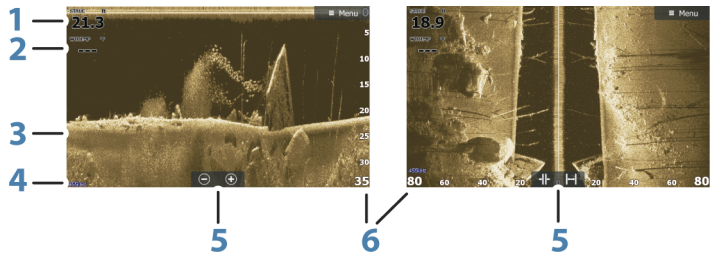
→ **Note:** This unit cannot operate CHIRP frequencies and SideScan at the same time. If you turn on StructureScan Left/Right view, you will not be able to use the CHIRP sonar.



The view

The StructureScan panel can be set up as a DownScan image, or showing left/right side scanning.

The DownScan image can also be added as an overlay to the traditional Sonar image.



- 1 Depth
- 2 Temperature
- 3 Bottom
- 4 Frequency
- 5 Zoom (downscan) / Range (sidescan) icons
- 6 Range scale

Zooming the StructureScan image

You can zoom a StructureScan image by:

- using the zoom (+ or -) buttons
- using the +/- keys

Zoom level is shown on the bottom left side of the panel.

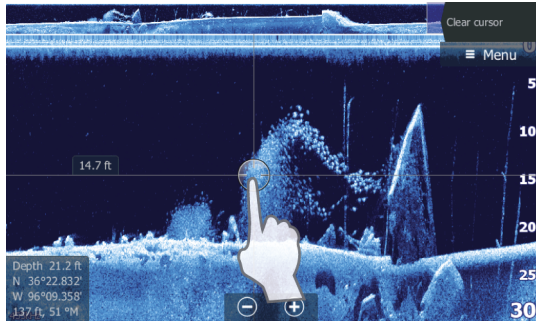
Using the cursor on the StructureScan panel

By default, the cursor is not shown on the StructureScan image.

When you position the cursor on a DownScan image, the screen pauses, the cursor information window and the history bar are activated. On a DownScan image, the depth is shown at cursor position.

When you position the cursor on a SideScan image, the screen pauses, and the cursor information window is activated. On a SideScan image, the left/right distance from the vessel to the cursor are shown at the cursor position.

To remove the cursor and the cursor elements from the panel, select the **Clear cursor** option.

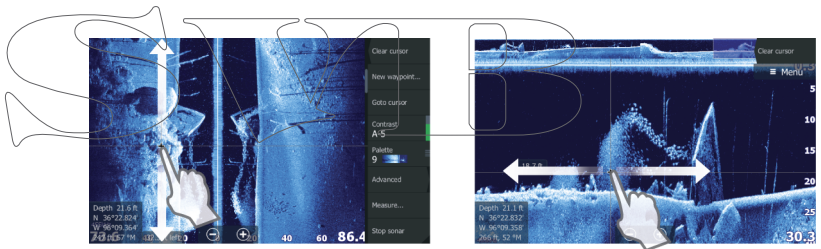


Viewing StructureScan history

When the cursor is active in a DownScan view, the history bar is shown at the top of the panel.

In a SideScan view, you can pan the image to see sides and history by dragging the image left, right, and up.

To resume normal StructureScan scrolling, press **Clear cursor**.



Setting up the StructureScan image

Use the StructureScan menu to set up the image. When the cursor is active, some options in the menu are replaced with cursor mode features. Select **Clear cursor** to return to the normal menu.

Range

The range setting determines the water depth and SideScan range that is visible on the screen.

Auto range

When the range is set to Auto the system automatically sets the range depending on the water depth.

Preset range levels

You can select between several preset range levels.

StructureScan frequencies

StructureScan supports two frequencies. 455 kHz provides ideal range and image quality in most situations, while 800kHz is used to provide higher detail in shallow water.

Contrast

Determines the brightness ratio between light and dark areas of the screen.

To adjust the contrast setting:

1. Select the contrast icon or activate the contrast option in the menu to display the color adjustment bar
2. Drag the bar up or down to get the desired contrast setting or select **Auto contrast**.

→ **Note:** We recommend that you use **Auto contrast**.



Palettes

You can select between several display palettes optimized for a variety of fishing conditions.

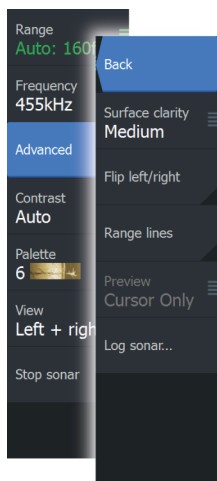
View

You can set up the StructureScan page as a DownScan image, left only, right only, or left/right side scanning.

Stop sonar

Use the **Stop sonar** menu option when you want to turn off the StructureScan transducer, but not turn off the unit.

Advanced StructureScan settings



Surface clarity

Wave action, boat wakes and temperature inversions can cause on-screen clutter near the surface.

The surface clarity option reduces surface clutter by decreasing the sensitivity of the receiver near the surface.

→ **Note:** By default, surface clarity is set to Low, for optimal image return and clarity.

Flipping the Structure image left/right

If required, the left/right SideScanning images can be flipped to match the direction of the transducer installation.

Range Lines

Range lines can be added to the image to make it easier to estimate depth (Downscan) and distance (SideScan).

Preview

You can turn off sonar history preview, have it always shown at the top of the screen, or have it appear only when the cursor is active. By default, the sonar history preview appears when the cursor is active.

Recording StructureScan data

You can record StructureScan data and save the file internally in the unit, or onto a memory card as described in *"Start recording sonar data"* on page 63.

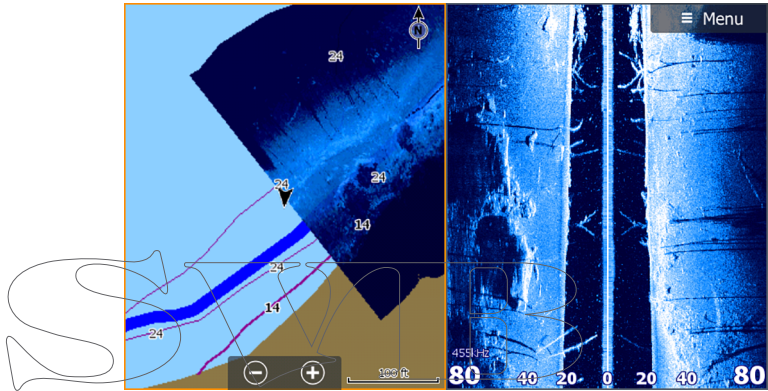
9

StructureMap

The StructureMap feature overlays SideScan images from a StructureScan source on the map. This makes it easier to visualize the underwater environment in relation to your position, and aids in interpreting SideScan images.

The StructureMap image

The example below shows a chart panel with Structure overlay, combined with a traditional SideScan panel.



You move around in the chart as usual when you have a Structure overlay:

- Touch operation: zoom the chart and the scanned image by using the zoom (+ or -) buttons. Drag on the panel to view the scanned image.
- Key operation: zoom the chart and the scanned image by using the +/- keys.

Selecting the **Clear cursor** option removes the cursor from the panel, and the chart center is positioned at the vessel.

Activating Structure overlay

1. Turn on Structure overlay from the chart menu
 - The chart menu is increased to show Structure options
 - Structure data starts to appear on the chart screen as soon as Structure overlay is enabled

2. Select Structure source

- Live data is default

→ **Note:** Structure overlay can also be activated by selecting a saved StructureMap file in the files browser.

StructureMap sources

Two sources can be used to overlay Structure logs on the charts, but only one can be viewed at a time:

- Live data - Used when StructureScan data is available on the system.
- Saved files - These are recorded StructureScan (*.sl2) data that are converted to StructureMap (*.smf) format. Saved *.smf files can be used even if no StructureScan sources are connected.

Live source

When live data is selected, the SideScan imaging history is displayed as a trail behind the vessel icon. The length of this trail varies depending on available memory in the unit and range settings. As the memory fills up, the oldest data is automatically deleted as new data is added. When increasing the search range, the ping speed of the StructureScan transducer is reduced, but the width and the length of the image history is increased.

→ **Note:** Live mode does not save any data. If the unit is turned off, all recent data is lost.

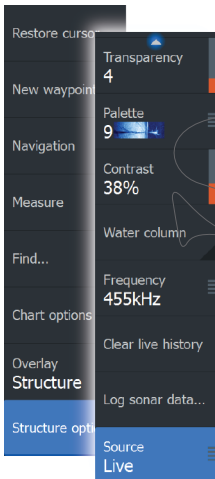
Saved files

When Saved files are selected, the StructureMap file is overlaid on the map based on position information in the file.

If the chart scale is large, the StructureMap area is indicated with a boundary box until the scale is large enough to show Structure details.

Saved mode is used to review and examine StructureMap files, and to position the vessel on specific points of interest on a previous scanned area.

→ **Note:** When saved files are used as the source, all StructureMap files found on the memory card and in the system's internal memory are displayed. If there is more than one StructureMap of the same area, the images overlap and clutter the chart. If several logs of the same



area are required, the maps should be put on separate memory cards.

StructureMap tips

- To get a picture of taller structures (a wreck, etc.) — do not drive over it, instead, steer the boat so the structure is on the left or right side of your vessel.
- Do not use Autorange when using StructureScan. Set your structure range to a significantly greater level (two-to-three times) than the water depth to ensure a complete scan and to maximize conversion accuracy.
- Do not overlap history trails when conducting a side-by-side scan of an area.

Recording StructureScan data

StructureScan data can be recorded from a chart panel with Structure overlay enabled.

StructureScan recordings can also be started from a StructureScan panel.

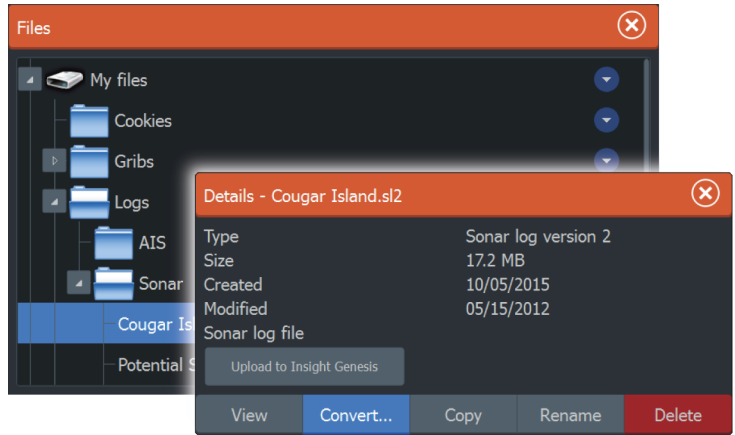
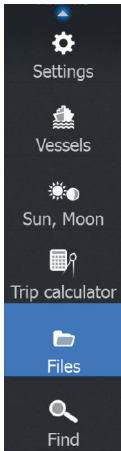
When StructureScan data is being recorded, there is a flashing red symbol and a message appears periodically at the bottom of the screen.

- **Note:** The message includes information about file size. Keep the size of your logs to 100MB or less to allow for faster file conversion.

The recording is stopped by re-selecting the record function.

Converting StructureScan data to StructureMap format

A StructureScan log file (.sl2) is converted to StructureMap format (.smf) after recording from the recording dialog, or from the files browser.



You can create standard or high resolution files. High resolution .smf files capture more detail, but take longer to convert and are larger than standard resolution files.

To save disc space it is recommended to remove the StructureScan (.sl2) files after conversion.

Using StructureMap with mapping cards

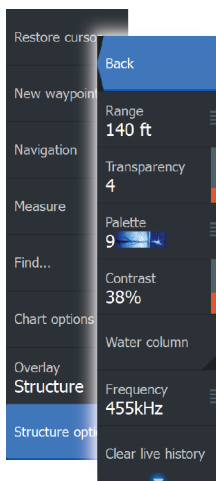
StructureMap allows you to maintain full chart capability and can be used with embedded cartography as well as Navionics, Insight and other third-party charting cards compatible with the system.

When using StructureMap with mapping cards, copy the StructureMap (.smf) files to the unit's internal memory. We recommend keeping copies of StructureMap files on external mapping cards.

Structure options

You adjust the StructureMap settings from the Structure options menu. The menu is available when Structure overlay is enabled.

Not all options are available when saved StructureMap files are used as the source. Unavailable options are greyed.



Range

Sets the search range.

Transparency

Sets the opaqueness of the Structure overlay. With minimum transparency settings, the chart details are almost hidden by the StructureMap overlay.

Palette

Selects Structure palette.



Water column

Shows/hides the water column in Live mode.

If turned OFF schools of bait fish might not be seen on the SideScan image.

If turned ON the accuracy of the SideScan image on the map might be affected by the water depth.

Frequency

Sets the transducer frequency used by the unit. 800 kHz offers the best resolution, while 455 kHz has greater depth and range coverage.

Clear live history

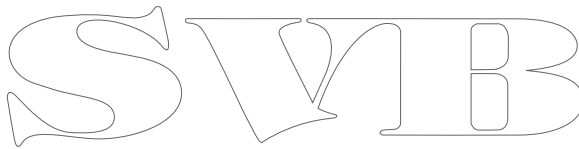
Clears existing live history data from the screen and begins showing only the most current data.

Log Sonar data

Records StructureScan data.

Source

Selects StructureMap source.

A large, stylized outline logo consisting of the letters 'S', 'V', 'I', and 'B' in a decorative, serif font. The letters are interconnected and have a thin, hollow appearance.

10

Info panels

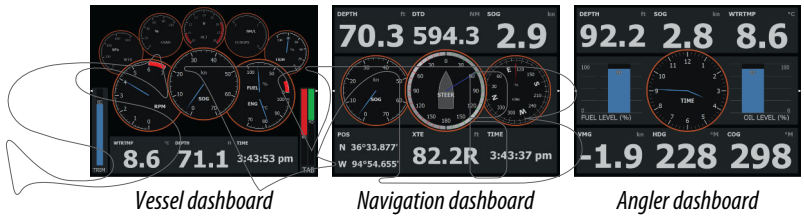
The **Info** panels consist of multiple gauges - analog, digital, and bar - that can be customized to display selected data. The panel displays data on dashboards, and you can define up to ten dashboards within the panel.

Dashboards

A set of dashboard styles are predefined to display vessel, navigation, and angler information.

→ **Note:** Only the Navigation dashboard is available on the Elite-5Ti.

You switch between the panel's dashboards by selecting the left and right arrow buttons on the panel. You can also select the dashboard from the menu.



→ **Note:** Additional dashboards can be activated from the menu if other systems are present on the network.

Customizing the Info panel

You can customize the Info panel by changing the data for each of the gauges in the dashboard, by changing the dashboard layout, and by adding new dashboards. You can also set limits for analog gauges.

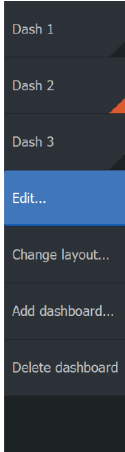
All edit options are available from the Info panel menu.

Available editing options depend on which data sources are connected to your system.

Edit a dashboard

Activate the dashboard you want to edit, then:

1. Activate the menu
2. Select the edit option
3. Select the gauge you want to change. Selected gauge is indicated with a colored background
4. Select information to be displayed, configure limits, and eventually change the source for the information
5. Save your changes by selecting the save option in the menu



11

Trolling motor autopilot

If a MotorGuide Xi5 trolling motor with Pinpoint GPS is connected to the NMEA 2000 network, then the SmartSteer (autopilot) functionality is available on the ELITE-7Ti. It is not available for the ELITE-5Ti.

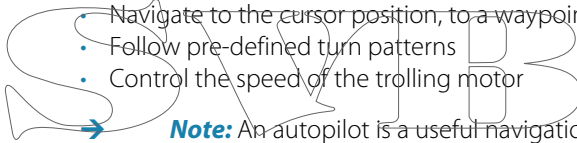
To use trolling motor autopilot functionality, you need the following:

- MotorGuide Xi5 trolling motor with Pinpoint GPS (available from MotorGuide)
- MotorGuide Pinpoint GPS Gateway (available from MotorGuide)
- NMEA 2000 network

Connect the MotorGuide Pinpoint GPS Gateway to your NMEA 2000. For details about installing this equipment, refer to the separate installation manuals that come with the equipment.

The Autopilot can automatically control the trolling motor to:

- Maintain a set heading
- Maintain the vessel's position
- Navigate to the cursor position, to a waypoint, or along a route
- Follow pre-defined turn patterns
- Control the speed of the trolling motor



Note: An autopilot is a useful navigational aid, but DOES NOT replace a human navigator.

Xi5 trolling motor software

If at any time there is an update required for your Xi5 trolling motor, instructions will be made available by MotorGuide, and posted on lowrance.com.

Follow the onscreen instructions to update Xi5 software.

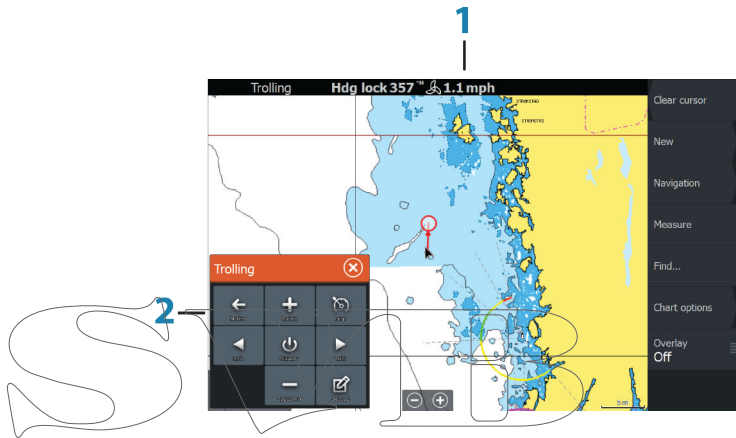
Safe operation with the autopilot

⚠ Warning: An autopilot is a useful navigational aid, but DOES NOT replace a human navigator.

Switching from automatic navigation to standby mode

To switch from autopilot to handheld remote or foot pedal steering, set the autopilot to standby mode. You can select standby mode from the **Autopilot Controller** or the **System Controls** dialog.

Autopilot interface



- 1 Autopilot information bar
- 2 Autopilot Controller

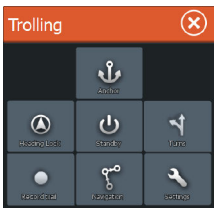
The Autopilot Controller

The autopilot is controlled from the **Autopilot Controller**, activated from the **System Controls** dialog displayed by pressing the **Power** key.

You can select the position of the Autopilot Controller on the page. Refer to "*Autopilot settings*" on page 90.

→ **Note:** As long as the **Autopilot Controller** is active, you cannot operate the background panel or its menu.

The **Autopilot Controller** can also be set up as a panel in a split panel page by using the Page Editor to make a Favorite page. For



information about Favorite pages, refer to *"Adding new favorite pages"* on page 26.

The Autopilot information bar

The **Autopilot information bar** is displayed when an autopilot mode is selected. The bar includes information about the autopilot mode and navigational information. The bar is present on all pages if the autopilot is in an active mode. In the Autopilot settings dialog, you can select that the bar is off when the autopilot is in standby mode. Refer to *"Autopilot settings"* on page 90.

Autopilot control of the trolling motor

Selecting an Arrival mode

The autopilot switches from navigation mode to the selected arrival mode when your vessel reaches the destination. Arrival mode is set to Standby by default. Before starting a navigation mode or a turn pattern, it is important to select an arrival mode that fits your navigation needs. Refer to *"Arrival mode"* on page 90.

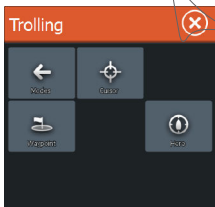
Anchor mode

Maintains your vessel position at a selected location.

→ **Note:** When in anchor mode, your vessel orientation can be affected by wind or currents.

The following occurs when you select to anchor at:

- **Waypoint**
Enables anchor mode when your vessel arrives at a selected waypoint.
- **Cursor**
Enables anchor mode when your vessel arrives at the cursor position.
- **Here**
Enables anchor mode at your current location.





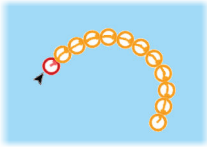
Heading Lock mode

Locks and maintains the current vessel heading. Use the left and right arrow buttons in the **Autopilot Controller** to make heading adjustments. To make small heading adjustments, single-select the left or right buttons. For larger adjustments, select and hold the left or right buttons.

Standby mode

Cancels autopilot activity and returns the vessel to handheld remote or foot pedal steering control.

Turn pattern steering



Steers the vessel in predefined turn patterns. When you select a turn pattern, the system creates temporary waypoints on the turn. The last waypoint on the turn is the final waypoint. When the vessel reaches the final waypoint, the vessel goes into arrival mode. Refer to *"Arrival mode"* on page 90".

Setting up a turn pattern

1. Select a turn pattern.
2. Enter the desired value(s) in the turn pattern dialog or use default settings.
3. Select the direction of the turn.

→ **Note:** Selecting a turn radius smaller than the GPS accuracy may result in incomplete navigation of the turn pattern.

U-turn

Changes the current set heading to be 180° in the opposite direction.

C-turn

Steers the vessel in a C-shaped pattern.

Spiral turn

Steers the vessel in a spiral with a decreasing or increasing radius. Negative values indicate decreasing radius while positive values indicate increasing radius.

Zigzag turns

Steers the vessel in a zigzag pattern.

Square turn

Makes the vessel automatically turn 90° after having travelled a defined leg distance.

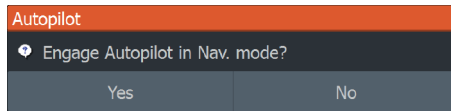
Lazy S-turn

Makes the vessel yaw around the main heading.

Navigation mode

In Nav. mode you can use the autopilot to steer the boat to cursor position, to a waypoint position, or along a pre-defined route. The position information from the GPS is used to keep the boat on the track line towards the destination point.

When you start navigating from an application (chart, steering, etc) you are prompted to engage the autopilot in Nav. mode.



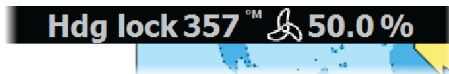
You can also initiate Nav. mode from the **Autopilot Controller** after navigation is started.

When you reach the destination, the autopilot switches to your **Arrival mode** setting. Refer to "*Autopilot settings*" on page 90.

Trolling motor speed control

In navigation modes (Heading lock mode, Nav. mode, and Turn pattern steering) there are two ways to control speed:

- Prop - selects a target propeller rate (percentage of power) shown as "%" in the Autopilot information bar.





- Cruise - selects a target cruise control speed shown as "mph", "kn", or "kph" in the Autopilot information bar.



- **Note:** Cruise set speed sets the target speed for your vessel. Your vessel may not be able to achieve the set target. The Cruise set speed (not your current speed) is displayed in the Autopilot information bar.

Speed adjustments

You can make speed adjustments on the Heading lock and Navigation control dialogs by selecting the Spd up (+) and Spd down (-) buttons, or by selecting the **Set Spd** or **Set prop** option and entering your desired speed or propeller rate.

Recording and converting a trail to a route

The **Record trail** button is used to record and convert a trail or part of a trail to a route.

1. Select **Record trail** at the desired location to start recording a new trail.
2. Select **Save route** to select the end location of the route. The Edit trail dialog appears.
3. Select **Create route**. The Edit route dialog appears.
4. Enter the route details and save it.

Autopilot settings

Autopilot settings is only applicable for the ELITE-7Ti.

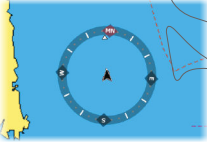
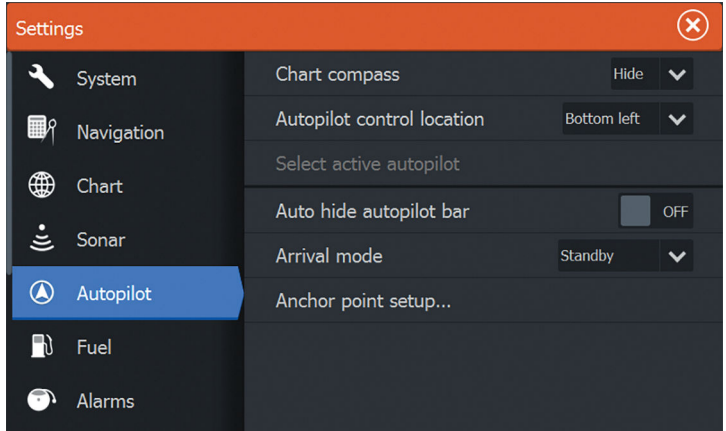


Chart compass

You can select to show a compass symbol around your boat on the chart panel. The compass symbol is off when the cursor is active on the panel.

Autopilot control location

Controls the location of the **Autopilot controller** on the panel.

Auto hide autopilot bar

Controls whether the Autopilot information bar is shown when the autopilot is in Standby mode.

Arrival mode

The trolling motor autopilot switches from navigation mode to the selected arrival mode when your vessel reaches the destination.

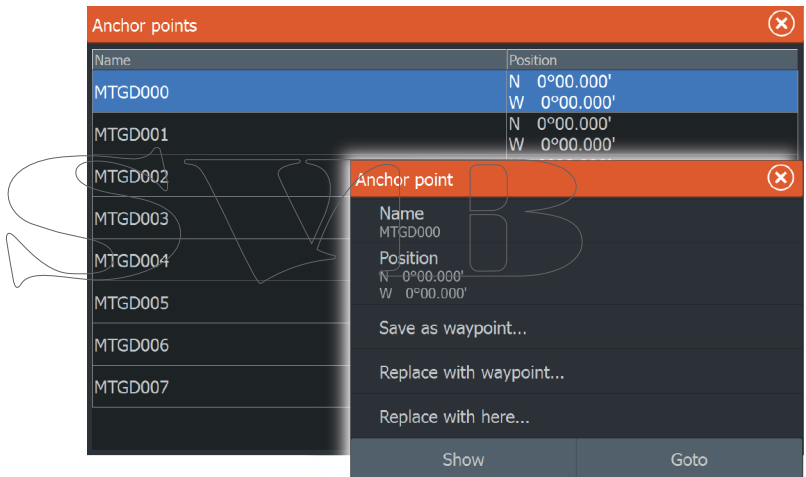
→ **Note:** Before starting a navigation mode or a turn pattern, it is important to select an arrival mode that fits your navigation needs.

Arrival modes are:

- **Standby**
Cancels autopilot activity and returns the vessel to handheld remote or foot pedal control.
 - **Heading lock**
Locks and maintains the last vessel heading.
 - **Anchor**
Anchors the vessel at the current destination.
- **Note:** We recommend only using heading lock in open water.

Anchor point setup

Anchor points can be saved as a new waypoint, replaced with an existing waypoint, or set as your current coordinates.



Anchor points are synced with the Xi5 trolling motor. If any anchor points are stored in the motor, they appear in the anchor points list.

12

Wireless connection

GoFree wireless connectivity gives you the ability to:

- Use a wireless device to remotely view (smartphone and tablet) and control the system (tablet only).
- Access the GoFree Shop.
- Upload your Sonar logs to create custom maps at Insight Genesis.
- Download software updates
- Connect to third party applications



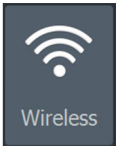
→ **Note:** Maps, charts, software updates, and other data files can be large. Your data provider may charge you based on the amount of data you transfer. If you are unsure contact the service provider for information.

The unit includes:

- Built-in wireless functionality for connecting to the internet and wireless devices such as smartphones and tablets.
- Built-in Bluetooth wireless technology.

The built-in Bluetooth wireless technology gives you the ability to connect the unit to Bluetooth enabled devices. For more information, refer to "*Bluetooth wireless technology*" on page 94.

Connect and disconnect from a wireless hotspot



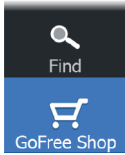
To connect to a wireless hotspot, select the Wireless option in the System Controls dialog and then select Not Connected. This opens the Wireless Devices dialog. Use this dialog to select the desired hotspot, enter the login information and then select Connect.

Connecting to a wireless hotspot changes the wireless mode to **Client mode**. In this mode, you can access the GoFree Shop.

To disconnect from a wireless hotspot, select the Wireless option in the System Controls dialog, then select Connected *hotspot_name*, and then Disconnect. This changes the wireless mode to **Access point mode**. In this mode, you can connect a wireless device so that Apps

such as GoFree Controller & Viewer can access the vessel's navigation information.

GoFree Shop



The built-in wireless functionality must be connected to an external wireless hotspot in order to access the GoFree Shop.

At the GoFree Shop you can browse, purchase and download compatible content for your system including navigation charts and Insight Genesis Maps. When you log on, the system automatically gives you a notification if a new software version is available for your system. If an update is available, you can download it to a card slot or defer the download until later. If you defer the download until later, the notification is available in the About dialog accessible from the System Settings.

GoFree Controller & Viewer



The wireless functionality lets you use a wireless device to remotely view (smartphone and tablet) and control the system (tablet only). The system is viewed and controlled from the wireless device by the GoFree Controller & Viewer Apps downloaded from their relevant Application store. When remote control is accepted, the active page is mirrored to the wireless device.

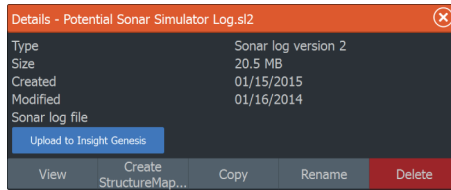
- **Note:** To use smartphones and tablets to view and control the system, wireless functionality must be disconnected from the wireless hotspot (in **Access point mode**).
- **Note:** For safety reasons, Autopilot and CZone functions cannot be controlled from a wireless device.

Uploading log files to Insight Genesis

To upload a recorded Sonar log file to Insight Genesis, select the file you want to upload from the Files panel and select the upload to Insight Genesis option.

- **Note:** You must be connected to a wireless hotspot to upload recorded log files to Insight Genesis.
- **Note:** Recorded log files can also be uploaded to Insight Genesis if you have specified **Upload to Insight Genesis**

in the Log Sonar dialog. For more information, refer to *"Start Recording log data"* on page 63.



Bluetooth wireless technology

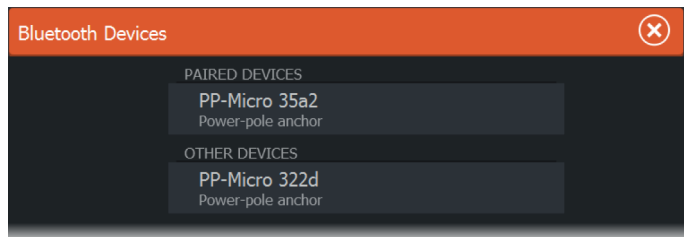
→ **Note:** Bluetooth available early 2016.

The ELITE Ti includes built-in Bluetooth wireless technology. To connect the ELITE Ti to Bluetooth enabled devices you must *pair* them.

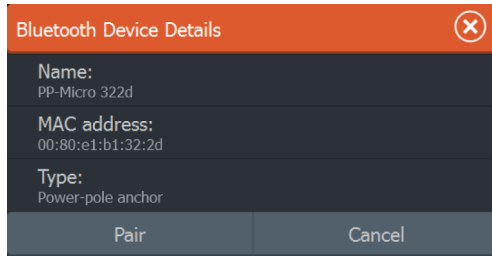
Pairing Bluetooth devices

To *pair* the unit with a Bluetooth enabled device, do the following:

1. Turn on the Bluetooth enabled device so that it is able to send and receive Bluetooth signals.
2. Open the Wireless settings dialog in the ELITE Ti and turn on Bluetooth, if it is not already enabled.
3. Select **Bluetooth devices**. The system searches for Bluetooth enabled devices, and lists them in the Bluetooth Devices dialog. Devices that are already paired are listed under **Paired Devices**. Devices that are not paired are listed under **Other Devices**.



4. Select the Bluetooth enabled device you want to *pair* with in the list under **Other Devices**. The **Bluetooth Device Details** dialog opens.



5. Select **Pair** to *pair* the ELITE Ti to the device.
6. Repeat these steps for each device you want to pair with the ELITE Ti.

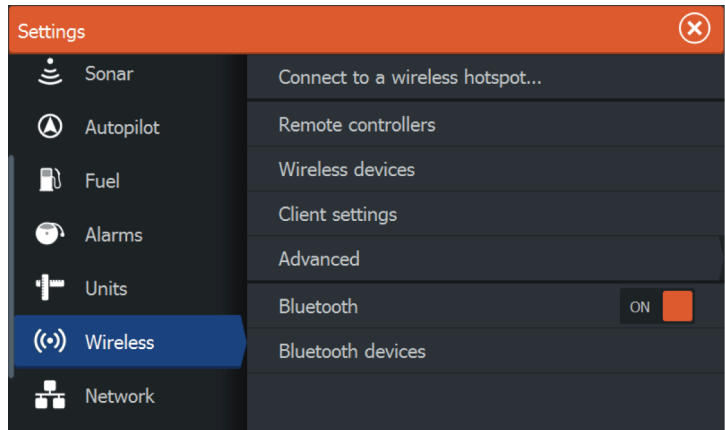
Pairing with dual Power-Poles

If dual Power-Poles are installed on your boat, the one that is paired first automatically becomes **Port** and the second is set to **Starboard** in the Power-Pole controls.

To swap them around, unpair the connected Power-Poles. And then, toggle off and on **Bluetooth** in the Wireless settings dialog to reset the Bluetooth memory. Once Bluetooth has been toggled back on, proceed in pairing the Power-Poles in the correct order.

Wireless settings

Provides configuration and setup options for the wireless functionality.



Connect to a wireless hotspot

Displays the Wireless device dialog that you can use to connect the wireless functionality to a wireless hotspot.

Remote controllers

When a wireless device (smart phone or tablet) is connected, it should appear in the Remote controllers list. Selecting 'Always allow' means the device can automatically connect without needing a password each time. This menu also allows you to disconnect devices that no longer require access.

Wireless devices

Shows the internal wireless module and any connected WIFI-1 devices, as well as their IP and channel number. If a WIFI-1 is connected and the system detects the software is out of date, an option to update is also displayed. WIFI-1 updates, when required, are included with the display updates.

Select a device to view additional information about it. 'Network Name' and 'Network Key' can be edited for security, and 'Channel' can be changed if the connection to your unit is compromised due to interference. 'Mode' can be changed on WIFI-1 devices only. Restore defaults returns the unit to factory settings.

Client settings

Displays information about the wireless hotspot your unit is connected to or the last one your unit was connected to. You can select the hotspot in the dialog to set it as a hotspot you want to always connect to when in range or you can select to delete it.

Advanced

Initiates the Iperf and DHCP Probe tools that help in fault-finding and setting up the wireless network.

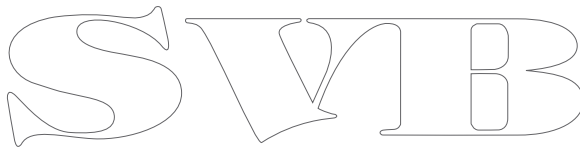
→ **Note:** Iperf and DHCP Probe are tools provided for diagnostic purposes by users familiar with network terminology and configuration. Navico is not the original developer of these tools, and does not provide support related to their use.

Bluetooth

Enables the built-in Bluetooth wireless technology functionality.

Bluetooth devices

Displays the Bluetooth Device list dialog. Use the Bluetooth Device List dialog to pair or remove pairing to Bluetooth enabled devices.

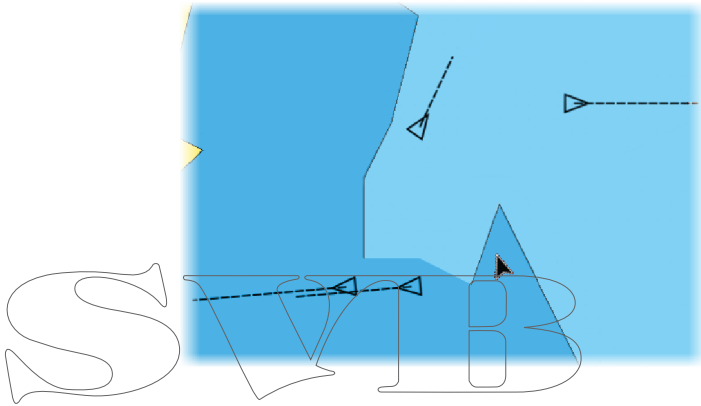


13

AIS




Any AIS or NMEA 0183 VHF that can do AIS can be used by the ELITE-5Ti, if the AIS receiver can send and receive at the same NMEA 0183 baud rate. The ELITE-7Ti can use any NMEA 2000 or NMEA 0183 AIS device.


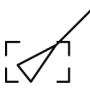
AIS targets can be displayed as overlay on chart images, making this feature an important tool for safe travelling and collision avoidance. You can set alarms to notify you if an AIS target gets too close or if the target is lost.



AIS target symbols

The system uses the AIS target symbols shown below:

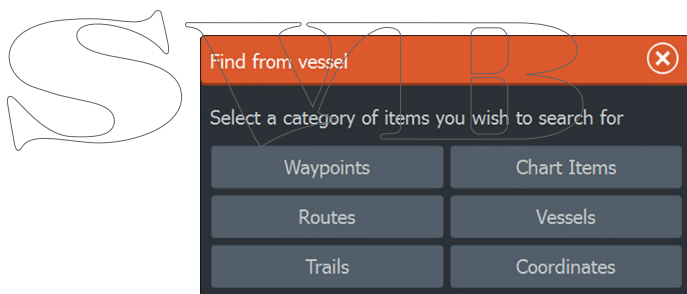
	Sleeping AIS target (not moving or at anchor).
	Moving and safe AIS target with course extension line.
	Dangerous AIS target, illustrated with bold line. A target is defined as dangerous based on the CPA and TCPA settings. Refer to " <i>Defining dangerous vessels</i> " on page 104.

	<p>Lost AIS target. When no signals have been received within a time limit, a target is defined as lost. The target symbol represents the last valid position of the target before the reception of data was lost.</p>
	<p>Selected AIS target, activated by selecting a target symbol. The target returns to the default target symbol when the cursor is removed from the symbol.</p>

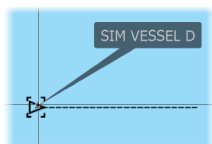
Searching for AIS items

You can search for AIS targets by using the **Find** option in the Tools panel.

From a chart panel you can search for AIS targets by using the **Find** option in the menu. If the cursor is active, the system searches for vessels around the cursor position. Without an active cursor, the system searches for vessels around your vessel's position.

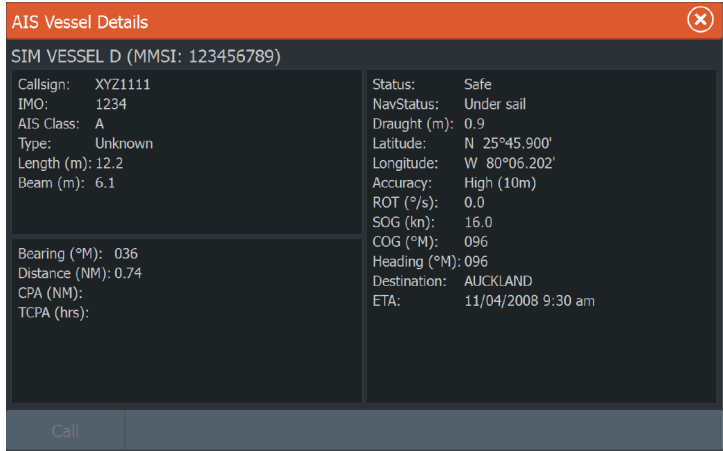


Viewing information about single AIS targets



When you select an AIS icon on the chart panel the symbol changes to Selected target symbol, and the vessel's name is displayed.

You can display detailed information for a target by selecting the AIS pop-up, or from the menu when the target is selected.

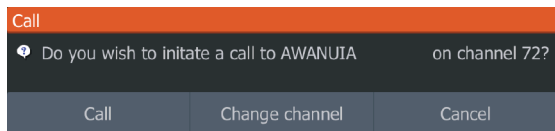


Calling an AIS vessel

If the system includes a VHF radio supporting DSC (Digital Select Calling) calls over NMEA 2000 (ELITE-7Ti only) or NMEA 0183, you can initiate a DSC call to other vessels from the ELITE-5Ti or ELITE-7Ti.

The call option is available in the **AIS Vessel Details** dialog, and in the **Vessel** status dialog activated from the **Tools** panel.

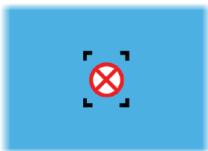
From the **Call** dialog you can change channel or cancel the call. The **Call** dialog is closed when the connection is established.



AIS SART

When an AIS SART (Search and Rescue beacon) is activated, it starts transmitting its position and identification data. This data is received by your AIS device.

If your AIS receiver is not compliant with AIS SART, it interprets the received AIS SART data as a signal from a standard AIS transmitter. An icon is positioned on the chart, but this icon is an AIS vessel icon.



If your AIS receiver is compliant with AIS SART, the following takes place when AIS SART data is received:

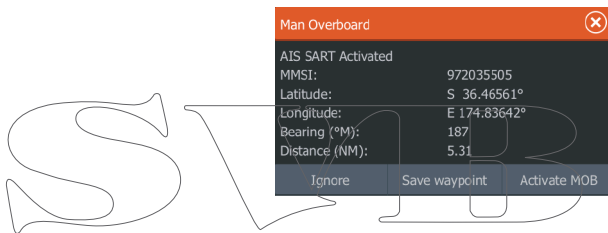
- An AIS SART icon is located on the chart in the position received from the AIS SART
- An alarm message is displayed

If you have enabled the siren, the alarm message is followed by an audible alarm.

→ **Note:** The icon is green if the received AIS SART data is a test and not an active message.

AIS SART alarm message

When data is received from an AIS SART, an alarm message is displayed. This message includes the AIS SART's unique MMSI number, and its position, distance, and bearing from your vessel.



You have the following options:

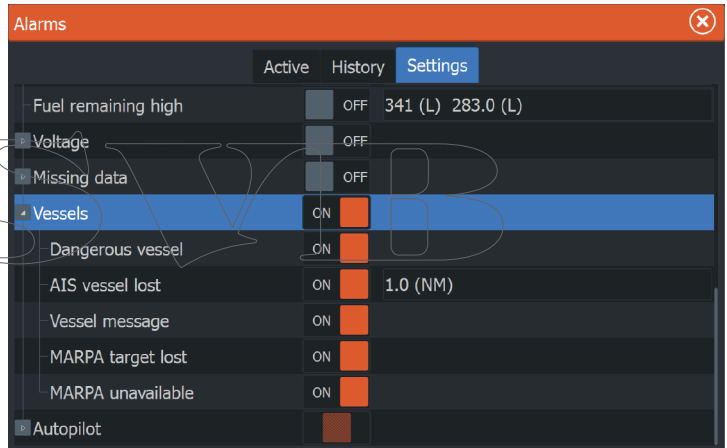
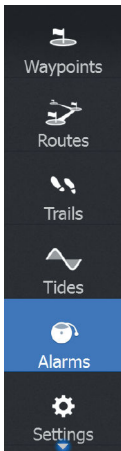
- Ignore the alarm
 - The alarm is muted and the message closed. The alarm does not reappear
- **Note:** If you ignore the alarm, the AIS SART icon remains visible on your chart, and the AIS SART remains in the Vessels list.
- Save the waypoint
 - The waypoint is saved to your waypoint list. This waypoint name is prefixed with MOB AIS SART - followed by the unique MMSI number of the SART. For example, MOB AIS SART - 12345678.
- Activate the MOB function
 - The display switches to a zoomed chart panel, centered on the AIS SART position
 - The system creates an active route to the AIS SART position

- **Note:** If the MOB function is already active, this will be terminated and replaced by the new route towards the AIS SART position!
- **Note:** If the AIS stops receiving the AIS SART message, the AIS SART remains in the Vessels list for 10 minutes after it receives the last signal.

If you select the AIS SART icon on the chart panel, then you can see the AIS MOB details.

Vessel alarms

You can define several alarms to alert you if a target shows up within predefined range limits, or if a previously identified target is lost.



Dangerous vessel

Controls whether an alarm will be activated when a vessel comes within the predefined CPA or TCPA. Refer to *"Defining dangerous vessels"* on page 104.

AIS vessel lost

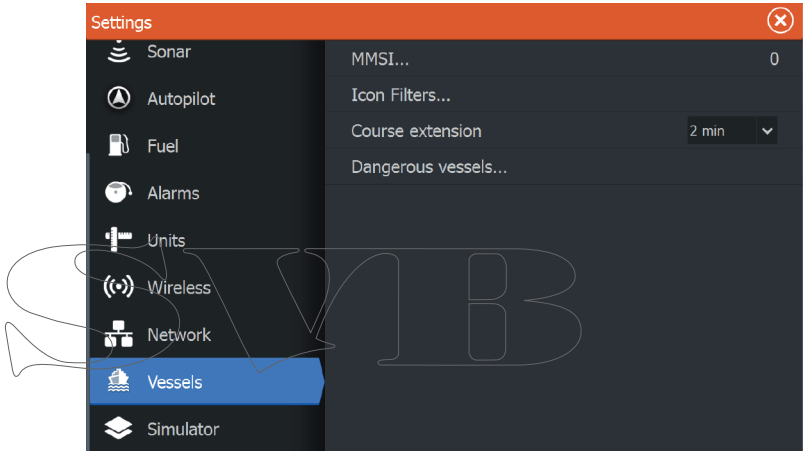
Sets the range for lost vessels. If a vessel is lost within the set range, an alarm occurs.

- **Note:** The check box controls whether the alarm pop-up box is displayed and if the siren goes on. The CPA and TCPA define when a vessel is dangerous regardless of the enabled or disabled state.

Vessel message

Controls whether an alarm will be activated when a message is received from an AIS target.

Vessel settings



Your vessel's MMSI number

You need to have your own MMSI (Maritime Mobile Service Identity) number entered in the system to receive addressed messages from AIS and DSC vessels.

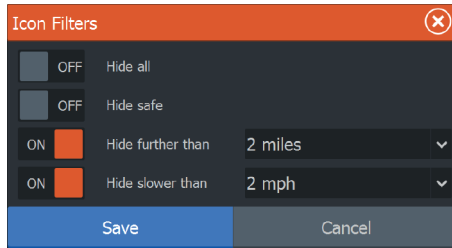
It is also important to have the MMSI number entered to avoid seeing your own vessel as an AIS target on the chart.

- **Note:** The Vessel message option in the alarm settings must be toggled on for any MMSI message to be displayed.

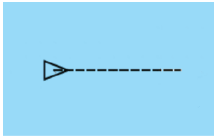
Icon filters

By default, all targets are shown on the panel if an AIS device is connected to the system.

You can select not to show any targets, or to filter the icons based on security settings, distance, and vessel speed.



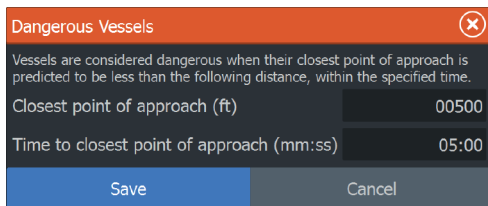
Course extension lines



You can set the length of the Course Over Ground (COG) extension lines for other AIS vessels. The length of the extension lines is either set as off, as a fixed distance, or to indicate the distance the vessel will move in the selected time period. If Off is selected, then no COG extension lines are shown for the vessel. For information about extension lines for your vessel, refer to *"Extension lines"* on page 45.

Defining dangerous vessels

You can define an invisible guard zone around your vessel. When a target comes within this distance, the symbol changes to the "dangerous" target symbol. An alarm is triggered if activated in the Alarm settings panel.



14

Alarms

Alarm system

The system continuously checks for dangerous situations and system faults while the system is running. When an alarm situation occurs, an alarm message pops up on the screen.

If you have enabled the siren, the alarm message is followed by an audible alarm, and the switch for external alarm becomes active.

The alarm is recorded in the alarm listing so that you can see the details and take the appropriate corrective action.

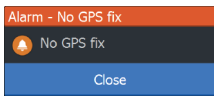
Type of messages

The messages are classified according to how the reported situation affects your vessel. The following color codes are used:

Color	Importance
Red	Critical
Orange	Important
Yellow	Standard
Blue	Warning
Green	Light warning

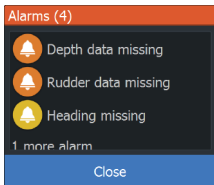
Single alarms

A single alarm is displayed with the name of the alarm as the title, and with details for the alarm.



Multiple alarms

If more than one alarm is activated simultaneously, then the alarm message displays a list of up to 3 alarms. The alarms are listed in the order they occur with the alarm activated first at the top. The remaining alarms are available in the Alarms dialog.



Acknowledging a message

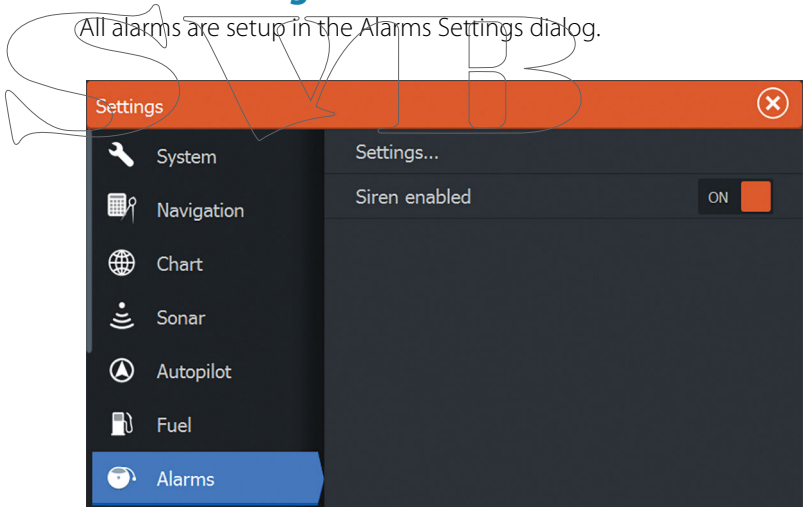
The following options are available in the alarm dialog for acknowledging a message:

- **Close**
Sets the alarm state to acknowledged, meaning that you are aware of the alarm condition. The siren / buzzer stops and the alarm dialog is removed.
However, the alarm remains active in the alarm listing until the reason for the alarm has been removed.
- **Disable**
Disables the current alarm setting. The alarm does not show again unless you turn it back on in the Alarms dialog.

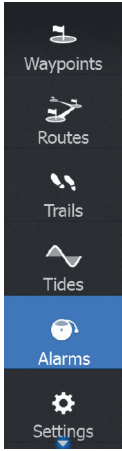
There is no time-out on the alarm message or siren. They remain until you acknowledge the alarm or until the reason for the alarm is removed.

Alarms dialog

All alarms are setup in the Alarms Settings dialog.



The alarm dialogs can also be activated from the Tools panel. The alarm dialogs include information about active alarms and alarm history.



Alarms

Active History Settings

Depth data missing

Alarms

Active History Settings

Depth data missing raised 8:21 am 10/03/2014

Alarms

Active History Settings

	Active	History	Settings
No GPS fix	ON	<input type="checkbox"/>	
Shallow water	ON	<input type="checkbox"/>	6.0 (ft)
Deep water	ON	<input type="checkbox"/>	100.0 (ft)
Water temp rate	ON	<input type="checkbox"/>	9 (°F/min)
Anchor	<input type="checkbox"/>	OFF	164 (ft)
Low boat speed	ON	<input type="checkbox"/>	6 (mph)
XTE	ON	<input type="checkbox"/>	
Waypoint radius	ON	<input type="checkbox"/>	
Arrival	ON	<input type="checkbox"/>	
True wind shift	<input type="checkbox"/>	OFF	45 (°)

SVMB

15

Tools

By default, the Tools panel includes icons used for accessing options and tools that are not specific to any panel.

When external equipment is integrated to the unit, new icons might be added to the Tools panel. These icons are used for accessing the external equipment's features.

Waypoints/routes/trails

List of waypoints, routes, and trails with details.

Select the waypoint, route, or trail you want to edit or delete.

Tides

Displays tide information for the tide station nearest to your vessel.

Select the arrow panel buttons to change the date, or select the date field to access the calendar function.

Available tide stations can be selected from the menu.

Alarms

Active alarms

List of active alarms.

Alarm history

List of all alarms with time stamp.

Alarm settings

List of all available alarm options in the system, with current settings.

Settings

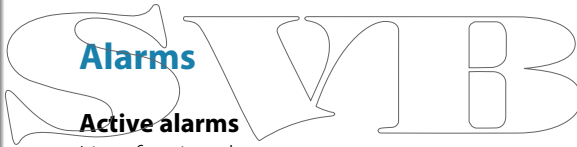
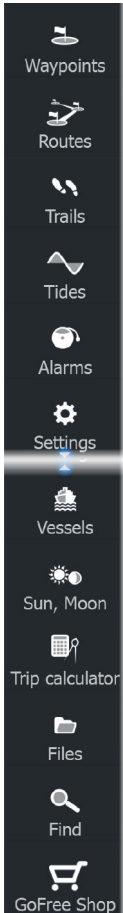
Provides access to application and system settings.

System settings

The system settings provides access to the following:

Language

Controls the language used on this unit for panels, menus, and dialogs. Changing the language causes the unit to restart.



Text size

Used for setting the text size in menus and dialogs.

Default setting: Normal

Key beeps

Controls the loudness of the beep sound when a key is pressed.

Default setting: Loud

Time

Controls the local time zone offset, and the format of the time and date.

Datum

If your paper charts are in a different format, you can change the datum settings accordingly to match your paper charts.

Coordinate system

Several coordinate systems can be used to control the format for latitude and longitude coordinates displayed on the chart panel.

Magnetic variation

Magnetic variation is the difference between true bearings and magnetic bearings, caused by different locations of the Geographic and the Magnetic north poles. Any local anomalies such as iron deposits might also affect the magnetic bearings.

When set to Auto, the system automatically converts magnetic north to true north. Select manual mode if you need to enter your own local magnetic variation.

Satellites

Status page for active satellites.

WAAS (and EGNOS) differential position correction can be configured to ON or OFF.

Restore defaults

Allows you to select which settings are to be restored to their original factory settings.

⚠ Warning: If waypoints, routes, and trails are selected, they are permanently deleted.

Advanced

Shows a panel with more advanced settings. Used for setting how your system displays various user interface information. In addition, controls which features are shown in the interface.

About

Displays copyright information, software version, and technical information for this unit.

Navigation

Provides options and dialogs where you specify settings for your navigation, such as arrival radius, XTE limit, XTE Alarm, Trails, and Logging Type. Refer to "*Navigation settings*" on page 56.

Chart

Provides options and dialogs where you specify settings for your charts. Settings and display options made in the Chart settings page are common for all chart panels. Refer to "*Chart settings*" on page 44.



Provides options and dialogs where you specify settings for your sonar. Refer to "*Sonar settings*" on page 68.

Autopilot

Provides options where you specify settings for your autopilot. Refer to "*Autopilot settings*" on page 90.

Fuel

Provides a dialog showing total fuel used, fuel used per trip, and fuel used per season. In addition, it provides access to configuration engine and tanks, and calibration of tanks (refuel) dialogs. Refer to the Installation Manual.

Alarms

Provides the option to enable the siren. It also provides a dialog where you specify turning on alarms for items, and includes active alarm information and alarm history.

Units

Provides setup of units of measure used on various data types.

Wireless

Provides dialogs where you set remote controllers, view wireless devices, and customize advanced settings. For more information about using this panel, refer to "*Wireless settings*" on page 95.

Network

Provides information about your network, settings options, and configuration options. For more information about using this panel, refer to the Installation Manual.

Vessels

Provides dialogs where you define your vessel's MMSI, set icon filters, set course extension length, and specify dangerous vessels settings of closest point of approach and time to closest point of approach. For more information about using this panel, refer to "*Vessel settings*" on page 103.

Simulator

Provides for manually controlling the simulator. For more information, refer to "*Simulator*" on page 119.

Vessels

Status listing

List of all AIS and DSC vessels with available information.

Message listing

List of all messages received from other AIS vessels with time stamp.

Sun, Moon

Displays sunrise, sunset, moonrise and moonset for a position based on entered date and the position's latitude/longitude.

Trip calculator

Trip 1 / Trip 2

Displays voyage and engine information, with reset option for all data fields.

Today

Displays voyage and engine information for current date. All data fields are automatically reset when the date changes.

Files

File management system for Files, Waypoints, Routes, Trails, and Settings.

Viewing files

Select a file in the Files panel and then the view file option in the **Details** dialog.

Copying files to a card in the card reader

You can copy screen captures and logs to a card in the card reader. You can also export System Settings, Waypoints, Routes, and Trails to a card. Exporting files is covered in the section "*Maintenance*" on page 114.

Find

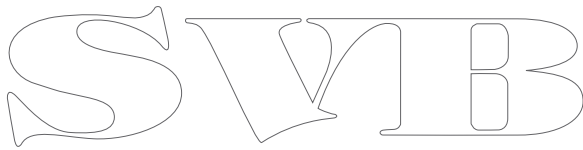
Search function for chart items (waypoints, routes, trails, etc.).

GoFree Shop

→ **Note:** The built-in wireless functionality must be connected to an external wireless hotspot in order to access the GoFree Shop. Refer to "*Connect and disconnect from a wireless hotspot*" on page 92.

Opens the GoFree Shop web site. At the GoFree Shop you can browse, purchase, and download compatible charts for your system. You can also upload your Sonar logs to be shared on Social Map charts. When you log on, the system automatically gives you a notification if a new software version is available for your system. If

an update is available, you can download it to a card slot or defer the download until later.

A large, stylized outline logo consisting of the letters 'S', 'W', 'I', and 'B' in a decorative, serif font. The letters are connected and have a thin, hollow appearance.

16

Maintenance

Preventive maintenance

The unit does not contain any field serviceable components. Therefore, the operator is required to perform only a very limited amount of preventative maintenance.

Checking the connectors

The connectors should be checked by visual inspection only.

Push the connector plugs into the connector. If the connector plugs are equipped with a lock, ensure that it is in the correct position.

Touchscreen calibration

→ **Note:** Ensure the screen is clean and dry before doing the calibration. Do not touch the screen unless prompted to do so.

In some cases it may be required to re-calibrate the touch screen. To re-calibrate your touchscreen, do the following:

1. Turn the unit off
2. Press and hold the **Waypoint** key, and turn the unit on
3. Continue to press in the **Waypoint** key during power on, until the calibration utility screen comes up
4. Follow the instructions on the screen to perform the calibration.

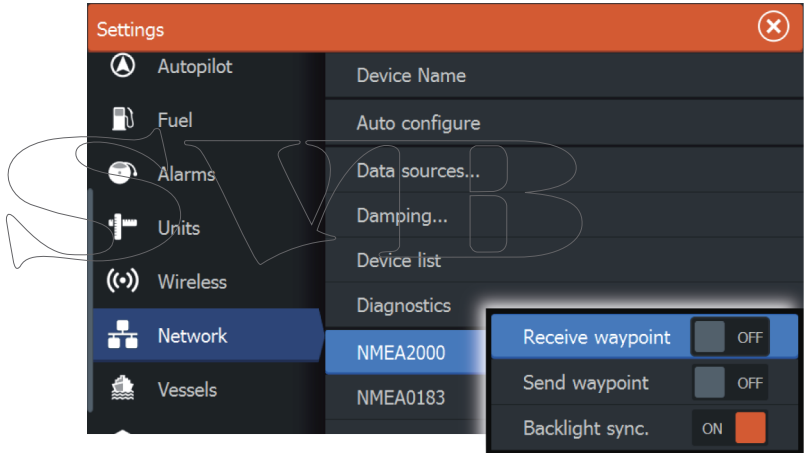
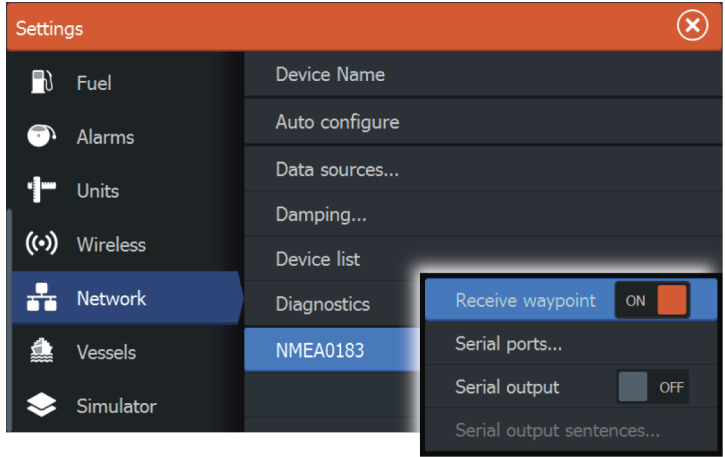
When completed, the unit returns to the application screen.

NMEA Data logging

All serial output sentences sent over the NMEA TCP connection are logged to an internal file. You can export and review this file for service and fault finding purposes.

The maximum file size is predefined. If you have added several other files to the system (file recordings, music, pictures, PDF files), this may reduce the allowed file size for the log file.

The system logs as much data as possible within the file size limitation, and then it starts overwriting the oldest data.



Exporting the log file

The log file can be exported from the files dialog.

When you select the Log database you are prompted to select a destination folder and filename. Once accepted, the log file is written to the chosen location.

Software upgrades

The latest software is available for download from our website, lowrance.com.

Detailed instructions for how to install the software are included in the upgrade files.

Backing up your system data

Waypoints, Routes, and Trails that you create are filed in your system. It is recommended to regularly copy these files and your system settings files as part of your back-up routine. The files can be copied to a card inserted in the card reader.

There are no export file format options for the system settings file. The following output formats are available for exporting Waypoints, Routes, and Trails files:

- **User Data File version 5**

This is used to import and export waypoints and routes with a standardized universally unique identifier (UUID), which is very reliable and easy to use. The data includes such information as the time and date when a route was created.

- **User Data File version 4**

This is best used when transferring data from one system to another, since it contains all the extra bits of information these systems store about items.

- **User Data file version 3 (w/depth)**

Should be used when transferring user data from one system to a legacy product (Lowrance LMS, LCX)

- **User data file version 2 (no depth)**

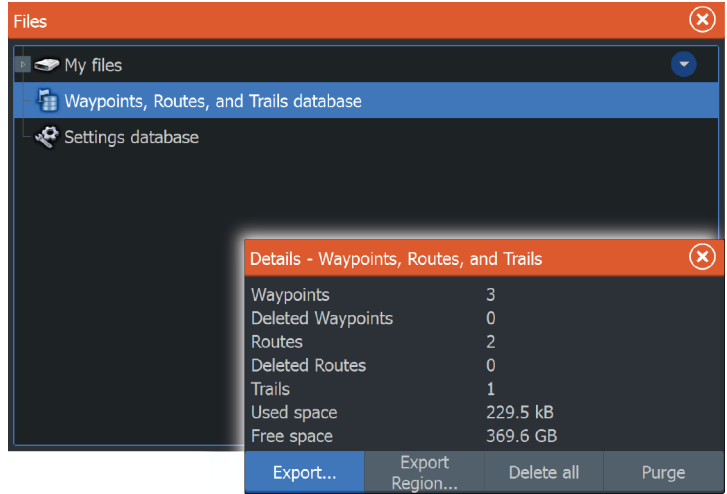
Can be used when transferring user data from one system to a legacy product (Lowrance LMS, LCX)

- **GPX (GPS Exchange, no depth)**

This is the format most used on the web that shares among most GPS systems in the world. Use this format if you are taking data to a competitors unit.

Export all Waypoints, Routes and Trails

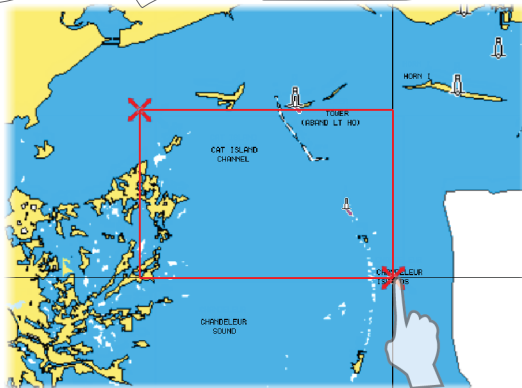
Use the export option if you want to backup all Waypoints, Routes, and Trails on your system.



Export region

The export region option allows you to select the area from where you want to export data.

1. Select Export region
2. Drag the boundary box to define the desired region



3. Select the export option from the menu
4. Select the appropriate file format
5. Select the serial port field to start the export

Purging Waypoints, Routes and Trails

- **Note:** When user data is purged from the memory, it cannot be recovered.

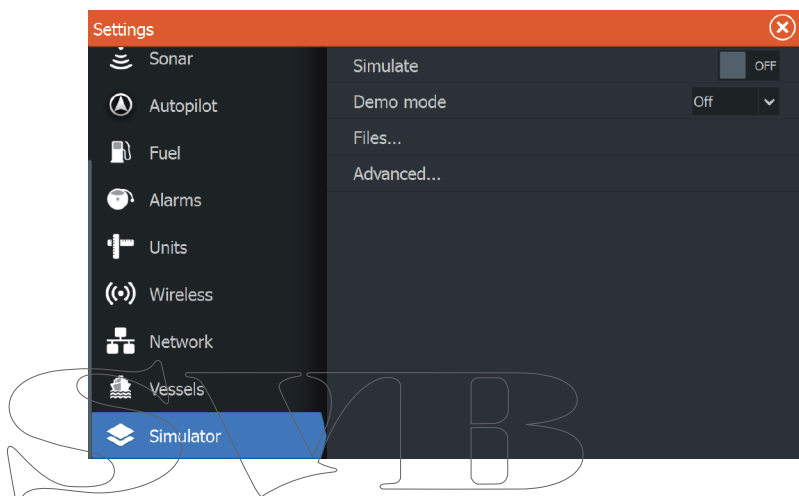
SVIB

17

Simulator

The simulation feature lets you see how the unit works in a stationary position and without being connected to the Sonar, GPS, etc.

Use the simulator to become familiar with your unit before using it on the water.



Demo mode

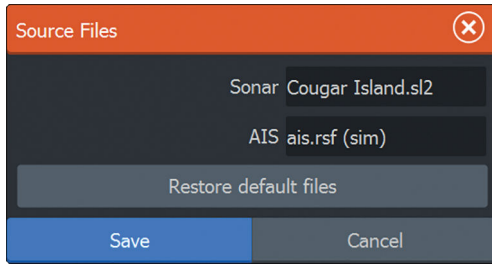
In this mode the unit automatically runs through the main features of the product; it changes pages automatically, adjusts settings, opens menus, etc.

If you tap on a touchscreen or press a key when demo mode is running, the demonstration pauses. After a time-out period, demo mode resumes and any changed settings are restored to default.

→ **Note:** Demo mode is designed for retail/showroom demonstrations.

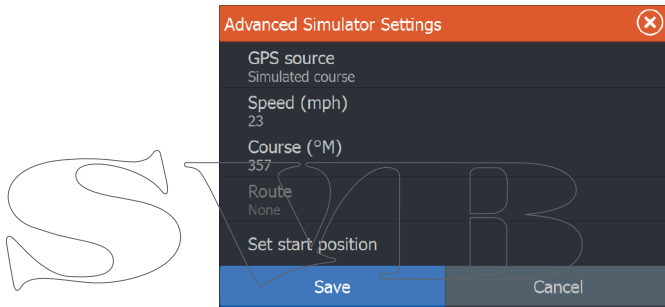
Simulator source files

You can select which data files are used by the simulator. A set of source files is included in your system, and you can import files by using a card inserted into the card reader. You can also use your own recorded log data files in the simulator.



Advanced simulator settings

The Advanced simulator settings allows for manually controlling the simulator.



GPS source

Selects where the GPS data is generated from.

Speed, Course and Route

Used for manually entering values when GPS source is set to Simulated course or Simulated route. Otherwise, GPS data including speed and course come from the selected source file.

Set start position

Moves your vessel to the current cursor position.


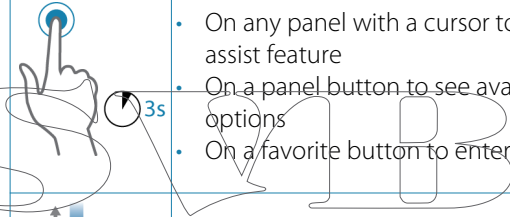



- **Note:** This option is only available when the GPS source is set to Simulated course.

18

Touchscreen operation

Basic touchscreen operation on the different panels is shown in the table below.

The panel sections in this manual have more information about panel specific touchscreen operation.

Icon	Description
	Tap to: <ul style="list-style-type: none">• Activate a panel on a multi-panel page• Position the cursor on a panel• Select a menu and a dialog item• Toggle a checkbox option on or off• Show basic information for a selected item
	Press and hold: <ul style="list-style-type: none">• On any panel with a cursor to activate the cursor assist feature• On a panel button to see available split screen options• On a favorite button to enter edit mode
	Scroll through a list of available options without activating any option.
	Flick to quickly scroll through e.g. the waypoint list. Tap the screen to stop the scrolling.
	Pan to position a chart or Sonar image on the panel.

SVIB

Index

A

- About this unit 110
- Active panel 21
- Adjusting panel size 25
- Advanced system settings 110
- AIS 98
 - Calling a vessel 100
 - Course extension lines 104
 - DSC 100
 - Icon filters 103
 - Searching for AIS items 99
 - Target symbols 98
 - Viewing information about targets 99
- AIS SART 100
- Alarm message 101

Alarms

- Acknowledging 106
- Alarm settings dialog 106
- Multiple alarms 105
- Single alarm 105
- Type of messages 105

Amplitude scope 67

Anchor mode 86

Application pages 15

Arrival

Mode 90

Arrival mode

Autopilot 86

Arrival radius 56

Auto sensitivity

Sonar 61

Autopilot

Anchor mode 86

Anchor point setup 91

Arrival mode 86,90

Chart compass 90

Control location setting 90

Control of the trolling motor 86

Controller 85

Heading Lock mode 87

Information bar 86

information bar, hide 90

Interface 85

Nav. mode 88

Settings, trolling motor 90

Speed control 88

Standby mode 87

Trolling motor 84

Turn off automatic navigation 85

Turn pattern steering,

Trolling motor 87

B

Backing up your system data 116

Bluetooth

Enable 97

Pairing devices 94

Wireless technology 94

Bottom lock 66

C

Card

Copying files to 112

Charts 28

3D charts 32

Chart compass 90

Chart data 29

Chart detail 34,41

Chart panel 28

Chart scale 29

Course up 30

Creating routes 32

Embedded cartography 29

- Find chart objects 32
 - Insight 34
 - Chart categories 34
 - Exaggeration 35
 - Imagery style 34
 - Jeppesen
 - Tides and currents 39
 - Look ahead 31
 - Measuring distance 22
 - Navionics 35, 36
 - Annotation 35
 - Chart details 36
 - Chart shading 36
 - Colored seabed areas 35
 - Community edits 35
 - Contours depth 36
 - Depth highlight range 38
 - Dynamic tides and currents 36
 - Easy view 37
 - Fish N' Chip 38
 - Presentation type 36
 - Rock filter 36
 - Safety depth 36
 - Shallow water highlight 39
 - Orientation 30
 - Overlay 33
 - Panning 30
 - Photo overlay, Jeppesen 42
 - Photo overlay, Navionics 37
 - Photo transparency, Jeppesen 42
 - Photo transparency, Navionics 38
 - Positioning the vessel on the chart panel 30
 - Selecting chart type 29
 - Settings 44
 - Symbol 30
 - Using the cursor 31
 - Vessel symbol 29
 - Zooming 29
 - Chart
 - Heading up 30
 - North up 30
 - Colorline
 - Adjusting 61
 - Sonar 61
 - Configuring overlay data 26
 - Connect
 - Bluetooth devices 94
 - Smartphone and tablet 93
 - Wireless hotspot 92
 - Control location setting, Autopilot 90
 - Controller & Viewer GoFree 93
 - Converting trails to routes 51
 - Coordinate system 109
 - Copying files to a card 112
 - Cursor 21
 - Cursor assist 22
 - Customizing your system 25
- ## D
- Dangerous vessels 104
 - Dashboards 82
 - Data Overlay 26
 - Datum 109
 - Demo mode 119
 - Depth line 67
 - Dialog boxes 21
 - Disconnect
 - Wireless hotspot 92
 - Display illumination 20

E

Export region 117

F

Favorite pages 16
 Adding new 26
 Edit 27
Features, how to turn on 110
Files to a card, copying 112
Files, management 112
Files
 Viewing 112
Find items tool 112
Fishing mode 69
 Reset 69
Flasher 67
Frequency 61
Fuel 110

G

Go to cursor 22
GoFree
 Shop 93
 Wireless connection 92
GoFree
 Controller & Viewer app 93

H

Heading Lock mode 87
Home page 14
Home page background 25

I

Illumination 20
Improving system
performance 118
Info panels 82

K

Key beeps 109

L

Language 108
Locking the touchscreen 20
Log sonar 69
Log sonar data 75
Logging type, Navigating
settings 57

M

Magnetic variation 109
Maintenance
 Touchscreen
 Calibration 114
Man Overboard
 Cancel navigation to
 MOB 23
 Creating a MOB 23
 Display information 23
Manual mode
 Sonar 63
Manual
 About 5
 Version 5
Manuals, viewing 5
Measuring distance 22
MMSI number 103

N

Nav. mode 88
Navigate 53
 Arrival radius 56
 Datum 109
 Logging type 57
 Routes 54
 Steer panel 54
 To cursor position 54

- Trails 56
 - With autopilot 55
- XTE alarm 56
- Navigation settings 56
- Network
 - Settings 111
- NMEA Data logging 114
- NMEA
 - Exporting log file 115
- Noise rejection 62

O

- Operation
 - Touch 121
- Overlay data
 - Configuring 26
 - turn on and off 26
- Overlay downscan 68
- Overlay, data information 26

P

- Pages
 - Selecting a page 21
 - Selecting active panel 21
- Pair
 - Bluetooth devices 94
- Palettes 67, 74
- Panels
 - Adjusting panel size 25
- PDF, viewing files 5
- Phantom Loran 57
 - Settings 57
- Power-Poles 16
 - Controls 17
 - Dual, pairing with 95
- Preventive maintenance 114
- Preview history
 - Sonar 67
- Purging 118

Q

- Quick split pages 16

R

- Range 60
- Recording
 - Start recording log data 63
 - Start recording sonar data 63
- Reset fishing mode 69
- Restore defaults 109
- Routes 49
 - Creating a new route on the chart panel 49
 - Creating a route from existing waypoints 50
 - Delete 50
 - Edit in chart panel 50
 - Edit Route dialog 51
 - Navigate 54
 - Routes
 - Dialog 47

S

- Satellites, system settings 109
- Saving waypoints 48
- Screen capture 24
- Scroll speed 62
- Sensitivity
 - Adjusting 61
 - Sonar 61
- Settings
 - Autopilot, trolling motor 90
 - Network 111
 - Tools 108
 - Unit of measure 111
- Simulator 119

Demo mode 119
 Source files 119
 SL2 format 64
 SLG format 64
 Software upgrade 116
 Software version 7
 Sonar 58
 Auto sensitivity 61
 Colorline 61
 Image 58
 Manual mode 63
 Preview history 67
 Sensitivity 61
 Split Zoom 66
 Start recording sonar data 63
 Stop recording log data 64
 Stop sonar 62
 Surface clarity 62
 Using the cursor 59
 View history 60
 View options 66
 View recorded data 65
 Zoom bar 59
 Zooming 59
 Speed control, Trolling motor 88
 Split pages 15
 Standby mode, Autopilot 87
 Steer panel 54
 Stop sonar 62
 StructureMap 64,76
 Activate 76
 Image 76
 Live source 77
 Mapping cards 79
 Options 80
 Saved files 77
 Sources 77
 Tips 78
 StructureScan 71
 Advanced settings 75
 Auto range 73
 Contrast 74
 Convert data to StructureMap format 78
 Flipping the image 75
 Frequencies 74
 Image 71
 Preset range levels 74
 Preview 75
 Range 73
 Range lines 75
 Recording data 78
 Surface clarity 75
 Using the cursor 72
 View down or side scan 74
 View history 73
 View options 71
 Zooming 72
 Surface clarity
 Sonar 62
 System Controls dialog 19
 System Settings 108
 About copyright and this unit 110
 Advanced 110
 Coordinate system 109
 Datum 109
 Key beeps 109
 Language 108
 Magnetic variation 109
 Restore defaults 109
 Satellites 109
 Text size 109
 Time 109
T
 Temperature graph 67
 Text size 109
 Time 109

- Tools 108
- Tools
 - Files 112
 - Find items 112
 - Routs 108
 - Settings 108
 - Trails 108
 - Waypoints 108
- Touchscreen Calibration 114
- Touch
 - Operation 121
- Touchscreen
 - Locking 20
- Trails
 - Converting trails to routes 51
 - Creating new 52
 - Navigating settings 56
 - Settings 52
- Trolling motor
 - Autopilot control 86
 - Speed control 88
- Turn off automatic navigation 85
- Turn pattern steering
 - Trolling autopilot 87
- Turning the unit on and off 19

U

- Units of measure, setting 111

V

- Vessel alarms 102
- Vessel settings 103
- View Echosounder log 70
- Viewing files 112

W

- Wallpaper, customizing 25
- Warranty 4
- Waypoints, routes and trails
 - Export 116
- Waypoints 47
 - Alarm settings 49
 - Delete 49
 - Dialog 47
 - Edit 48
 - Moving 48
 - Saving 48
- Wireless hotspot
 - Connect and disconnect 92

X

- XTE alarm
 - Navigating settings 56
- XTE limit 56
- xtf format 64

Z

- Zoom
 - Sonar 66

SVIB



LOWRANCE®

SVIB

CE0980