

SIMRAD®

GO XSE

Getting Started

ENGLISH

SVMB



SVIB

Contents

7 Introduction

- 7 The Home page
- 8 Application pages

10 Basic operation

- 10 System Controls dialog
- 10 Turning the system on and off
- 11 Selecting pages and panels
- 11 Adjusting panel size
- 12 Adding new favorite pages
- 12 Creating a Man Overboard waypoint

14 Charts

- 14 The Chart panel
- 15 Showing dual chart types
- 15 Panning the chart
- 15 Using the cursor on the panel
- 16 Positioning the vessel on the chart panel
- 17 Displaying information about chart items
- 18 Find objects on chart panels
- 18 3D charts

19 Waypoints, Routes, and Tracks

- 19 Waypoints
- 20 Routes
- 21 Tracks

22 Navigating

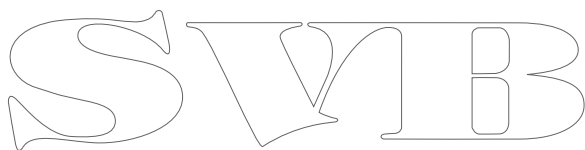
- 22 Navigation panels
- 23 Navigate to cursor position
- 23 Navigate a route

24 Autopilot

- 24 Safe operation with the autopilot
- 24 Activating the autopilot
- 24 Switching from automatic mode to manual steering
- 25 Autopilot indication on the pages

26	The Autopilot panel
27	Echosounder
27	The Echosounder image
28	Viewing Echosounder history
28	Setting up the image
29	StructureScan
29	The StructureScan image
30	Setting up the image
31	ForwardScan
31	The ForwardScan image
32	Setting up the image
32	Heading extension
34	Instrument panels
34	Dashboards
35	Wireless connection
35	Connect and disconnect from a wireless hotspot
36	Audio
36	Enabling audio
37	The Audio panel
37	Operating the audio system
38	Alarms
38	Alarm system
38	Alarms dialog
39	Tools
39	Waypoints/routes/tracks
39	Tides
39	Alarms
39	Settings
39	Vessels
40	Sun, Moon
40	TriplIntel

40	Files
40	Find
40	GoFree Shop



SVIB

1

Introduction

This manual provides an overview of the product and its features. For more detailed information about the features, functions and options, refer to the Operator manual. You can access the Operator manual from the Files option in the Tools panel, refer to "*Files*" on page 40.

The Home page

The **Home** page is accessed from any operation by selecting the **Home** button in the lower left corner of a panel.

HOME



1 Tools

Select a button to access dialogs used for carrying out a task, or for browsing stored information.

2 Applications

Select a button to display the application as a full page panel. Press and hold a button to display pre-configured split page options for the application.

3 Close button

Select to exit the Home page and return to the previous active page.

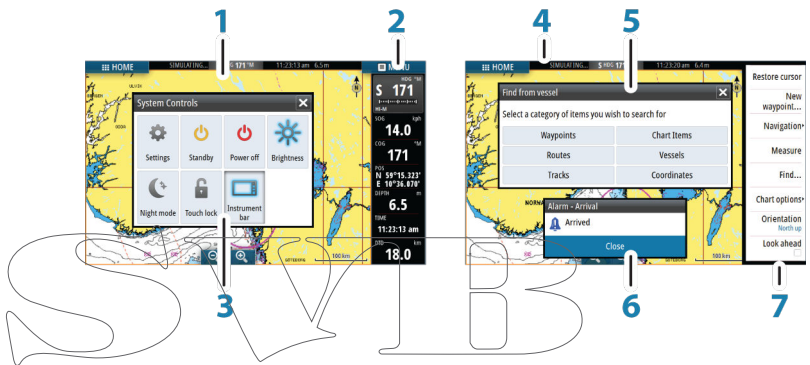
4 Favorites

Select a button to display the panel combination.
Press and hold a favorite button to enter edit mode for the Favorites panel.

5 Man Over Board (MOB) button

Select to save a Man Over Board (MOB) waypoint at the current vessel position.

Application pages



Each application connected to the system is presented on panels.
The application can be presented as a full page, or in combination with other panels in a multiple panel page.

All application pages are accessed from the **Home** page.

1 Application panel

2 Instrument bar

Navigation and sensor information. The bar can be turned off and it can be configured by the user.

3 System controls dialog

Quick access to basic system settings.

Display the dialog by a short press on the **Power** key or by swiping down from top of the screen.

4 Status bar

5 Dialog

Information to or input from the user.

6 Alarm message

Displayed if dangerous situations or system faults occur.

7 Menu

Panel specific menu.

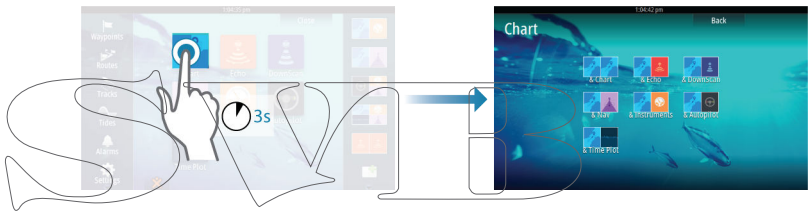
Display the menu by selecting the **MENU** panel button.

Pre-configured split pages

Each full screen application has several pre-configured split pages, featuring the selected application combined with each of the other panels.

→ **Note:** The number of pre-configured split pages cannot be changed, and the pages cannot be customized or deleted.

Access a pre-configured split page by pressing and holding the main panel button.



2

Basic operation

System Controls dialog

The System Controls dialog provides quick access to basic system settings. You display the dialog by making a short press on the **Power** key or by swiping down from the top of the screen.

The icons displayed on the dialog can vary. For example, the adjust splits option is only available if you are viewing a split page when you open the **System Controls** dialog.



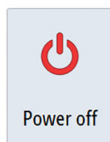
Activating functions

Select the icon of the function you want to set or toggle on or off. For those functions that toggle on and off, a highlighted icon indicates the function is activated, as shown in the Instrument bar icon above.

Turning the system on and off

You turn the system on and off by pressing and holding the **Power** key. You can also turn the unit off from the **System Controls** dialog.

If the **Power** key is released before the shut-down is completed, the power off process is cancelled.



Selecting pages and panels

Selecting a page

- Select a full page panel by selecting the relevant application button on the **Home** page
- Select a favorite page by selecting the relevant favorite button
- Select a predefined split panel by pressing and holding the relevant application icon

Select active panel

In a multiple panel page, only one panel can be active at a time. The active panel is outlined with a border.

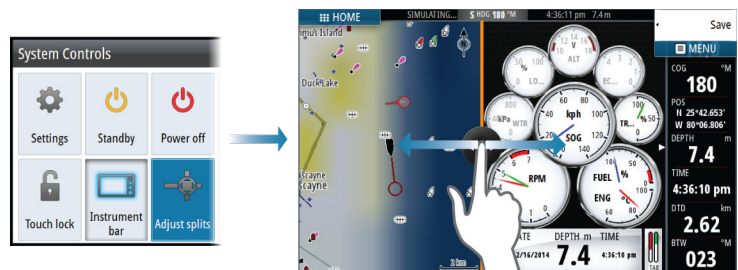
You can only access the page menu of an active panel.

You activate a panel by tapping it.

Adjusting panel size

You can change the panel size for an active split page. The panel size can be adjusted for both favorite pages and for predefined split pages.

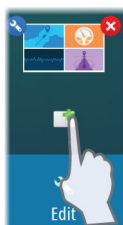
1. Activate the **System Controls** dialog
2. Select the adjust splits option in the dialog
3. Adjust the panel size by dragging the adjustment icon
4. Confirm your changes by tapping one of the panels or selecting the save option in the menu.



The changes are saved to the active favorite or split page.

Adding new favorite pages

1. Select the **New** icon in the favorite panel on the **Home** page to open the page editor dialog
 2. Drag and drop page icons to set up a new page
- **Note:** GO5 XSE favorite pages can have a maximum of 2 applications. GO7 XSE favorite pages can have a maximum of 4 applications.
3. Change the panel arrangement (only possible for 2 or 3 panels), if required
 4. Save the page layout.



The system displays the new favorite page, and the new page is included in the list of favorite pages on the **Home** page.



Creating a Man Overboard waypoint

If an emergency situation should occur, you can create a Man Overboard (MOB) waypoint at the vessel's current position by selecting the **MOB** button on the **Home** page.

When you activate the MOB function the following actions are automatically performed:

- a MOB waypoint is created at the vessel's position
- the display switches to a zoomed chart panel, centered on the vessel's position

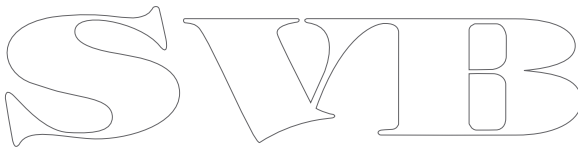
- the system displays navigation information back to the MOB waypoint

Multiple MOB waypoints are saved by repeatedly pressing the **MOB** buttons. The vessel continues to show navigation information to the initial MOB waypoint. Navigation to subsequent MOB waypoints needs to be done manually.

Delete a MOB waypoint

1. Select the MOB waypoint to activate it
2. Select the MOB waypoint's pop-up to display the MOB waypoint dialog
3. Select the delete option in the dialog.

A MOB waypoint can also be deleted from the menu when it is activated.

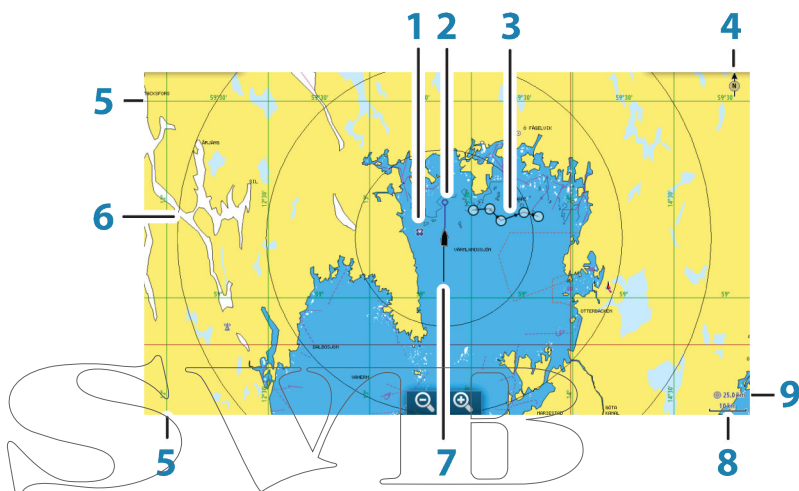


3

Charts

The chart function displays your vessel's position relative to land and other chart objects. On the chart panel you can plan and navigate routes, place waypoints, and display AIS targets.

The Chart panel



- 1 Waypoint*
- 2 Vessel with extension line (extension line is optional)
- 3 Route*
- 4 North indicator
- 5 Grid lines*
- 6 Range rings*
- 7 Track*
- 8 Chart range scale
- 9 Range rings interval (only displayed when Range rings are turned on)

* Optional chart items. You turn the optional chart items on/off individually from the Chart settings dialog.

Showing dual chart types

If you have different chart types available - embedded or in the card slot - you can show two different chart types simultaneously on a page with two chart panels.

You can select a dual chart panel by pressing and holding the Chart application button on the **Home** page, or by creating a favorite page with two chart panels.

Panning the chart

You can move the chart in any direction by dragging your finger on the screen.

Select the **Clear cursor** menu option to remove the cursor and cursor window from the panel. This also centers the chart to the vessel position.

Using the cursor on the panel

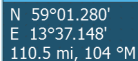
The cursor can be used to measure a distance, to mark a position, and to select items.

By default, the cursor is not shown on the panel.

Position the cursor by tapping the desired location on the screen.

When the cursor is active, the cursor position window is displayed.

To remove the cursor and cursor elements from the panel, select the **Clear cursor** option.



N 59°01.280'
E 13°37.148'
110.5 mi, 104 °M

GoTo cursor

You can navigate to a selected position on the image by positioning the cursor on the panel, then using the **Goto Cursor** option in the menu.

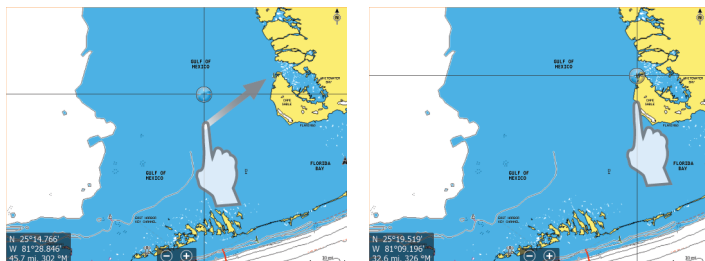
The Cursor assist function

The cursor assist function allows for fine tuning and precision placement of the cursor without covering details with your finger.

Press and hold your finger on the screen to switch the cursor symbol to a selection circle, appearing above your finger.

Without removing your finger from the screen, drag the selection circle over the desired item to display item information.

When you remove your finger from the screen the cursor reverts to normal cursor operation.



Measuring distance



The cursor can be used to measure the distance between your vessel and a selected position, or between 2 points on the chart panel.

1. Position the cursor on the point from where you want to measure the distance. Start the measure function from the menu.
 - The measuring icons appear with a line drawn from the vessel center to the cursor position, and the distance is listed in the cursor information window.

2. You can reposition the measuring points by dragging either icon as long as the measuring function is active

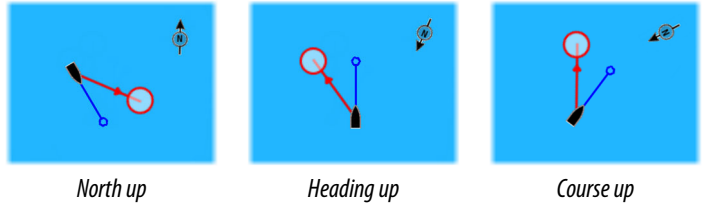
→ **Note:** The bearing is always measured from the grey icon to the blue icon.

You can also start the measuring function without an active cursor. Both measuring icons are then initially located at the vessel position. The grey icon follows the vessel as the vessel moves, while the blue icon remains at the position given when you activated the function. You terminate the measuring function by selecting the **Finish measuring** menu option.

Positioning the vessel on the chart panel

Chart orientation

Several options are available for how the chart is rotated in the panel. The chart orientation symbol in the panel's upper right corner indicates the north direction.



North up

Displays the chart with north upward.

Heading up

Displays the chart with the vessel's heading directed upward. Heading information is received from a compass. If heading is not available, then the COG from the GPS is used.

Course up

Rotates the chart in the direction of the next waypoint when navigating a route or navigating to a waypoint. If not navigating the heading up orientation is used until navigation is started.

Look ahead

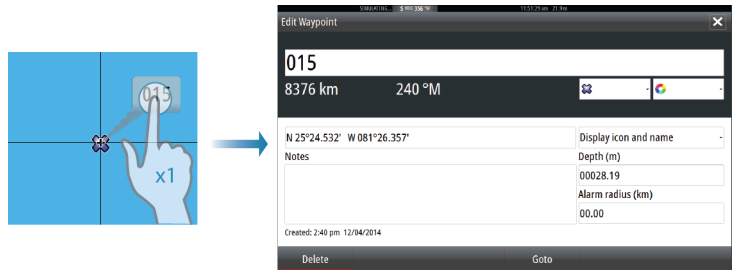
Moves the vessel icon closer to the bottom of the screen so that you can maximize your view ahead.

Displaying information about chart items

When you select a chart item, a waypoint, a route, or a target, basic information for the selected item is displayed. Select the chart item's pop-up to display all available information for that item. You can also activate the detailed information dialog from the menu.

→ **Note:** If you are viewing applicable Jeppesen charts on your system, you can select marine objects to display information about services and available multimedia (photos) associated with the location or object.

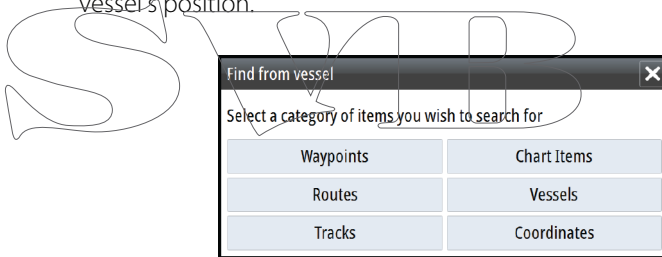
- **Note:** Pop-up information has to be enabled in chart settings to see basic item information.



Find objects on chart panels

You can search for other vessels or various chart items from a chart panel.

Activate the cursor on the panel to search from the cursor position. If the cursor is not active, the system searches for items from the vessel's position.



- **Note:** You must have a SIRIUS data package subscription to search for fueling stations and an AIS receiver connected to search for vessels.

3D charts

The 3D option provides a three dimensional graphical view of land and sea contours.

- **Note:** All chart types work in 3D mode, but without 3D cartography for the appropriate area the chart appears flat.

When 3D chart option is selected, the Pan and the Rotate icons appear on the right side of the chart panel.

4

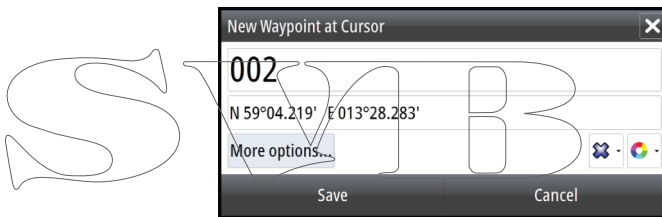
Waypoints, Routes, and Tracks

Waypoints

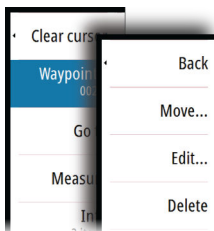
A waypoint is a user generated mark positioned on a chart, or on the Echosounder image. Each waypoint has an exact position with latitude and longitude coordinates. A waypoint positioned on the Echosounder image has a depth value, in addition to position information. A waypoint is used to mark a position you later may want to return to. Two or more waypoints can also be combined to create a route.

Saving waypoints

You can save a waypoint at a selected location by positioning the cursor on the panel, and then selecting the new waypoint option in the menu.



In the Chart and Nav panels, you can save a waypoint at the vessel position, when the cursor is not active, by selecting the new waypoint option in the menu.



Moving a waypoint

1. Select the waypoint you want to move. The waypoint icon expands to indicate that it is active.
2. Activate the menu and select the waypoint in the menu
3. Select the move option
4. Select the new waypoint position
5. Select Finish in the menu.

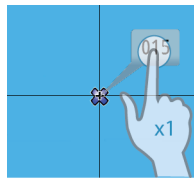
The waypoint is now automatically saved at the new position.

Edit a waypoint

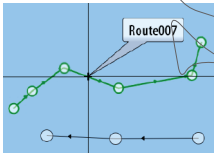
You can edit all information about a waypoint from the **Edit Waypoint** dialog.

This dialog is activated by selecting the waypoint's pop-up, or from the menu when the waypoint is activated.

The dialog can also be accessed from the Waypoints tool on the **Home** page.



Routes



A route consists of a series of routepoints entered in the order that you want to navigate them.

When you select a route on the chart panel it turns green, and the route name is displayed.

Creating a new route on the chart panel

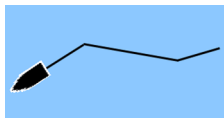
1. Activate the cursor on the chart panel
2. Select the new route option from the menu
3. Position the first waypoint on the chart panel
4. Continue positioning new routepoints on the chart panel until the route is completed
5. Save the route by selecting the save option in the menu.

Edit a route from the chart panel

1. Select the route to make it active.
2. Select the route edit option in the menu.
3. Position the new routepoint on the chart panel:
 - If you set the new routepoint on a leg, a new point is added between existing routepoints.

- If you set the new routepoint outside the route, the new routepoint is added after the last point in the route.
 - 4. Drag a routepoint to move it to a new position.
 - 5. Save the route by selecting the save option in the menu.
- **Note:** The menu changes depending on the selected edit option. All edits are confirmed or cancelled from the menu.

Tracks



Tracks are a graphical presentation of the historical path of the vessel, allowing you to retrace where you have travelled. Tracks can be converted to routes from the **Edit** dialog.

From the factory, the system is set to automatically track and draw the vessel's movement on the chart panel. The system continues to record the Tracks until the length reaches the maximum points, and then automatically begins overwriting the oldest points.

The automatic tracking function can be turned off from the Tracks dialog.

Creating new Tracks

You can start a new track from the **Tracks** dialog, activated by using the **Tracks** tool on the Home page.

5

Navigating

The navigation function included in the system allows you to navigate to the cursor position, to a waypoint, or along a predefined route.

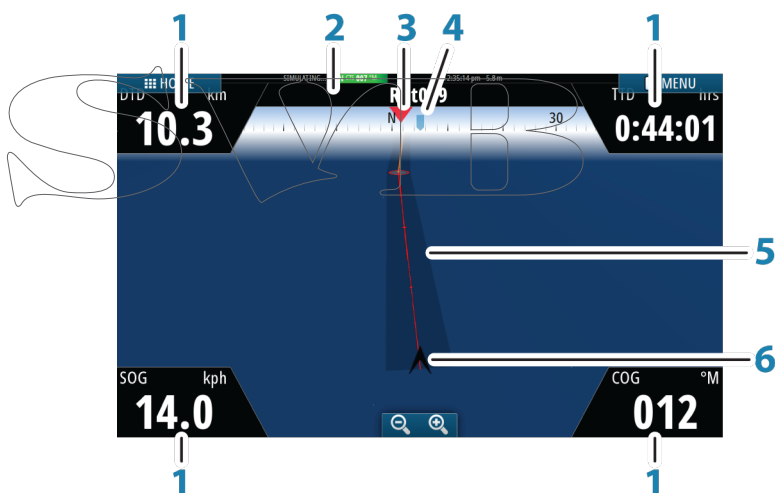
If autopilot functionality is included in your system, the autopilot can be set to automatically navigate the vessel.

For information about positioning waypoints and creating routes, refer to *"Waypoints, Routes, and Tracks"* on page 19.

Navigation panels

The Nav panels can be used to display information when you are navigating.

The Nav panel



The Nav panel is activated from the Home page, either as a full page panel or as part of a multiple panel page.

- 1 Data fields
- 2 Route information
- 3 Vessel heading

4 Bearing to next routepoint

5 Bearing line with allowed off course limit

When travelling on a route the bearing line shows the intended course from one waypoint towards the next. When navigating towards a waypoint (cursor position, MOB or an entered lat/lon position), the bearing line shows the intended course from the point at which navigation was started towards the waypoint.

6 Vessel symbol

Indicates distance and bearing relative to the intended course. If the XTE (Cross Track Error) exceeds the defined XTE limit, this is indicated with a red arrow including the distance from the track line.

Navigate to cursor position

You can start navigating to a cursor position on any chart, or Echosounder panel.

Position the cursor at the selected destination on the panel, and then select the **Goto Cursor** option in the menu.



Note: The **Goto Cursor** menu option is not available if you are already navigating.

Navigate a route

You can start navigating a route from the chart panel or from the **Route** dialog.

When route navigation is started, the menu expands and shows options for canceling the navigation, for skipping a waypoint, and for restarting the route from current vessel position.

6

Autopilot

If an AC12N, AC42N, SG05 or a NAC-1 autopilot computer is connected to the system, autopilot functionality is available in the system.

The system does not allow for more than one autopilot computer on the network.

The display unit automatically detects the autopilot computer available on the network and presents settings, configuration and user options for the connected computer.

An Autopilot is designed to maintain an accurate course in various sea conditions with minimal helm movements.

Safe operation with the autopilot

⚠ Warning: An autopilot is a useful navigational aid, but DOES NOT replace a human navigator.

⚠ Warning: A physical standby button should be available for the autopilot. The NAC-1 comes with a standby button, compatible remote controllers with a standby button can be used with the other autopilot computers.

Activating the autopilot

You activate the autopilot from any panel by selecting the autopilot tile in the Instrument bar, followed by selecting a mode in the **Autopilot Controller**.

Switching from automatic mode to manual steering

You switch the autopilot to STBY mode from any automatic operation mode from the autopilot pop-up or the physical standby button.



Autopilot indication on the pages



1 Autopilot indication in Status bar

2 Autopilot pop-up

3 Autopilot tile in Instrument bar

Autopilot mode indication in the Status bar

S HDG 007 °M

The Status bar shows autopilot information as long as an autopilot computer is connected to the network.

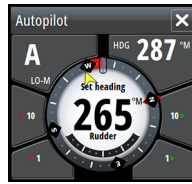
Icons are included if the autopilot is passive or locked by another autopilot control unit.

Autopilot pop up

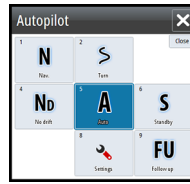
You control the autopilot from the autopilot pop-up. The pop-up has a fixed position on the page, and it is available for all pages except when an Autopilot panel is active.

As long as the autopilot pop-up is active, you cannot operate the background panel or its menu. You remove the pop-up from a page by selecting the **X** in the upper right corner. You turn it on again by selecting the autopilot tile in the instrument bar.

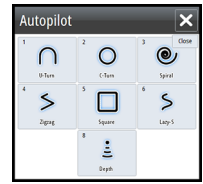
The following pop-ups are available:



Autopilot controller



Mode selection



Turn pattern selection

Autopilot tile in Instrument bar

You can select to show the autopilot tile in the Instrument bar.

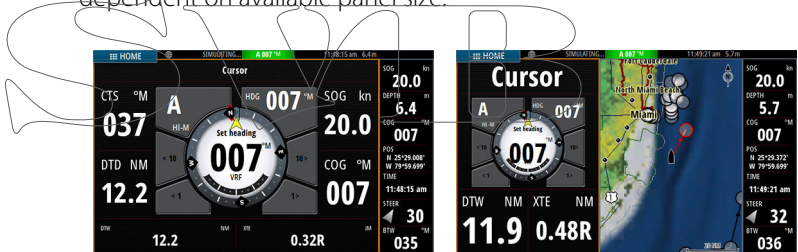
If the autopilot pop-up is turned off you can turn it on by selecting the tile in the Instrument bar.



The Autopilot panel

The autopilot panel is used to display navigation data. It can be shown as a full screen panel, or in a multi-panel page.

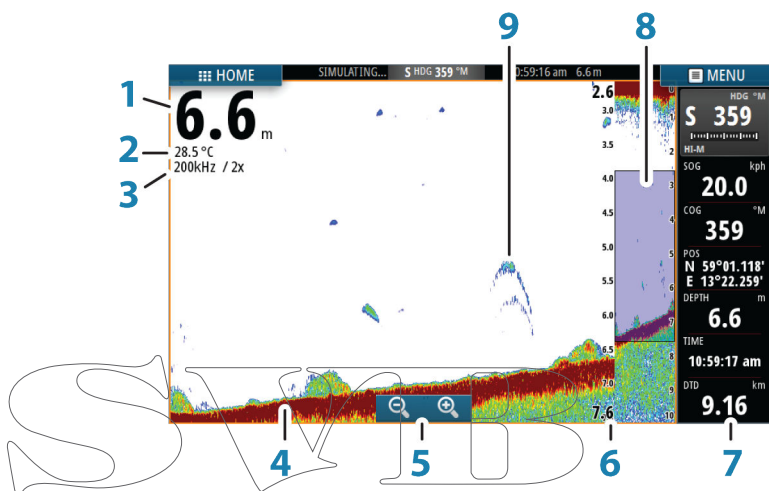
The number of data fields included in the autopilot panel is dependent on available panel size.



Echosounder

The Echosounder function provides a view of the water and bottom beneath your vessel, allowing you to detect fish and examine the structure of the sea floor.

The Echosounder image



- 1 Depth
- 2 Temperature
- 3 Frequency and Zoom scale
- 4 Bottom
- 5 Zoom buttons
- 6 Depth range scale
- 7 Instrument panel
- 8 Zoom column
- 9 Fish arches

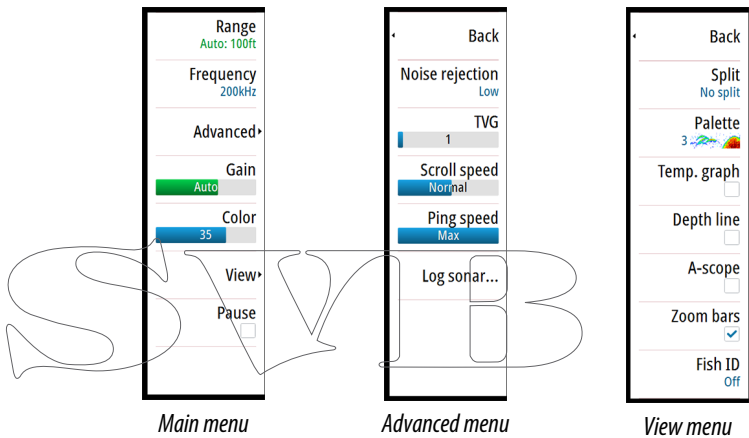
* Optional Echosounder items.

Viewing Echosounder history

You can view echosounder history by panning the image. To resume normal scrolling, select the **Clear cursor** menu option.

Setting up the image

Use the Echosounder menu options to set up the image. When the cursor is active, some options on the Echosounder menu are replaced with cursor mode features. Select **Clear cursor** to return to the normal Echosounder menu.

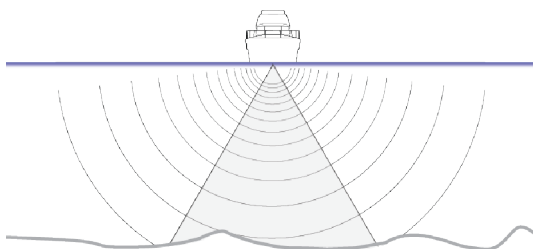


→ **Note:** The A-scope and Zoom bars options are only available on the GO7 XSE view menu.

8

StructureScan

StructureScan HD uses high frequencies to provide a high resolution, picture-like image of the seabed.

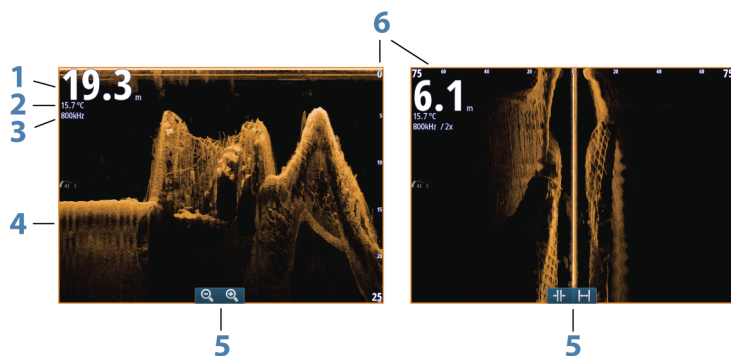


The StructureScan image

The view

The StructureScan panel can be set up as a DownScan image, or showing left/right side scanning.

The DownScan image can also be added as an overlay to the traditional Echosounder image.

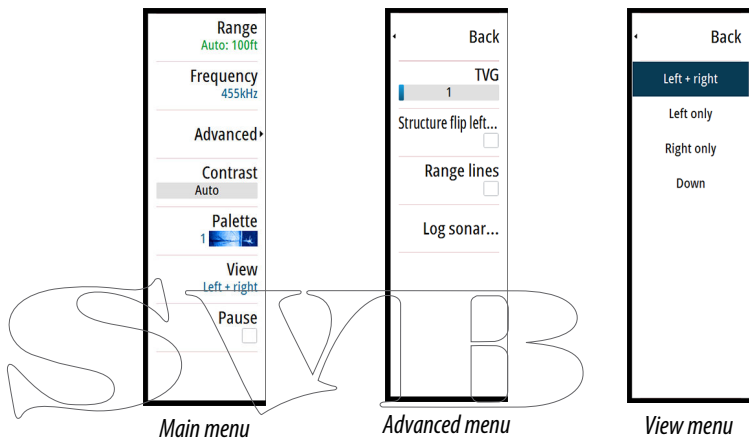


- 1 Depth
- 2 Temperature
- 3 Frequency
- 4 Bottom

- 5 Zoom (downscan) / Range (sidescan) icons
- 6 Range scale

Setting up the image

Use the StructureScan menu options to set up the image. When the cursor is active, some options on the StructureScan menu are replaced with cursor mode features. Select **Clear cursor** to return to the normal StructureScan menu.



9

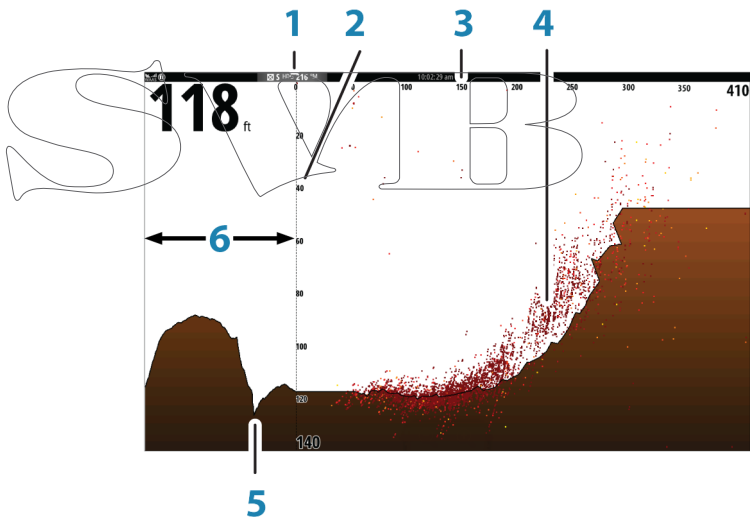
ForwardScan

ForwardScan sonar is a navigational aid that helps you monitor the underwater environment in front of your vessel while carrying out slow speed maneuvers.

To use the ForwardScan feature you must have a ForwardScan transducer mounted on your vessel. For installation instructions, refer to the ForwardScan transducer installation manual.

- **Note:** Do not rely on this equipment as your principle source of navigation or hazard detection.
- **Note:** Do not use this equipment to gauge depth or other conditions for swimming or diving.

The ForwardScan image

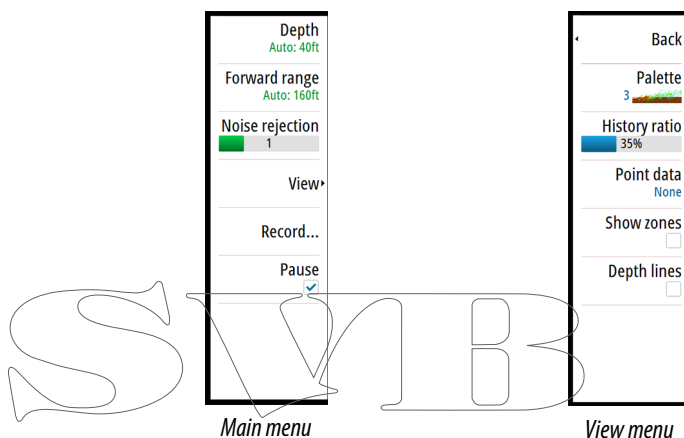


- 1 Transducer location shown as the origin on the page
- 2 Depth range scale and vessel position
- 3 Forward range scale
- 4 Point data

- 5 Bottom
- 6 Depth history

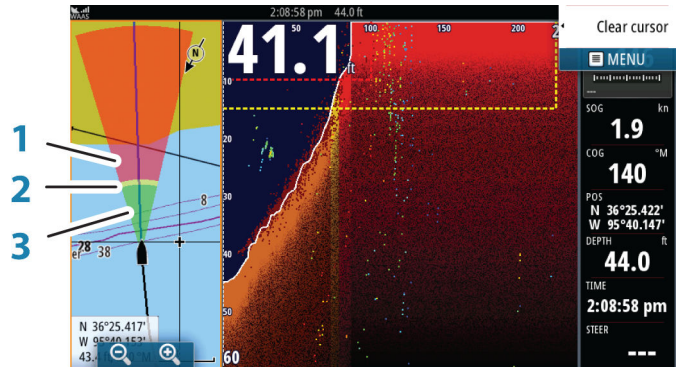
Setting up the image

Use the ForwardScan menu options to set up the image. When the cursor is active, some options on the ForwardScan menu are replaced with cursor mode features. Select **Clear cursor** to return to the normal ForwardScan menu.



Heading extension

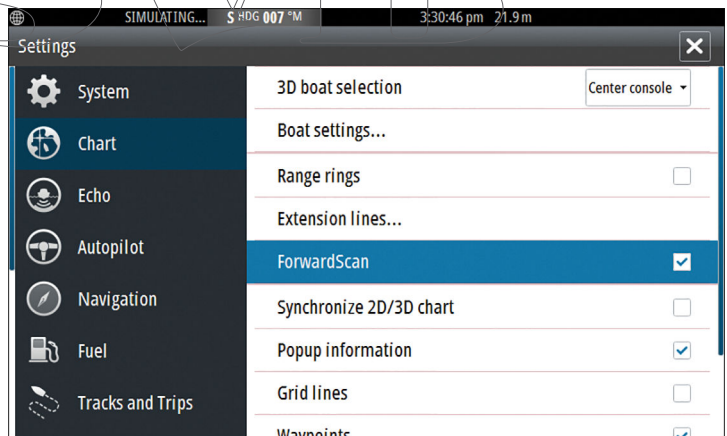
You can use the heading extension to monitor ForwardScan on the chart panel. Heading extension colors are based on the ForwardScan alarm values.



ForwardScan extension

- 1 Red - Critical
- 2 Yellow - Warning
- 3 Green - Safe

Select ForwardScan in the Chart Settings dialog to view the ForwardScan heading extension on the chart panel.



10

Instrument panels

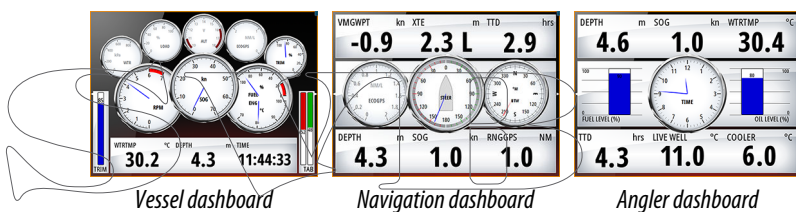
The Instruments panels consist of multiple gauges - analog, digital and bar - that can be customized to display selected data. The Instruments panel displays data on dashboards, and you can define up to ten dashboards within the Instruments panel.

→ **Note:** To include fuel/engine information, engine and tank information has to be configured from the Settings panel.

Dashboards

A set of dashboard styles are predefined to display vessel, navigation, and angler information.

You switch between the panel's dashboards by selecting the left and right arrow buttons on the panel. You can also select the dashboard from the menu.



→ **Note:** Additional dashboards can be activated from the menu if other systems (e.g. CZone) are present on the network.

11

Wireless connection

GoFree wireless connectivity gives you the ability to:

- Use a wireless device to remotely view (smartphone and tablet) and control the system (tablet only).
- Access the GoFree Shop.
- Upload your Sonar logs to create custom maps at Insight Genesis.
- Download software updates
- Connect to third party applications



The unit includes Built-in wireless functionality for connecting to the internet and wireless devices such as smartphones and tablets.

Connect and disconnect from a wireless hotspot



To connect to a wireless hotspot, select the Wireless option in the System Controls dialog and then select Not Connected. This opens the Wireless Devices dialog. Use this dialog to select the desired hotspot, enter the login information and then select Connect.

Connecting to a wireless hotspot changes the wireless mode to **Client mode**. In this mode, you can access the GoFree Shop.

To disconnect from a wireless hotspot, select the Wireless option in the System Controls dialog, then select Connected *hotspot_name*, and then Disconnect. This changes the wireless mode to **Access point mode**. In this mode, you can connect a wireless device so that Apps such as GoFree Controller & Viewer can access the vessel's navigation information.

12

Audio

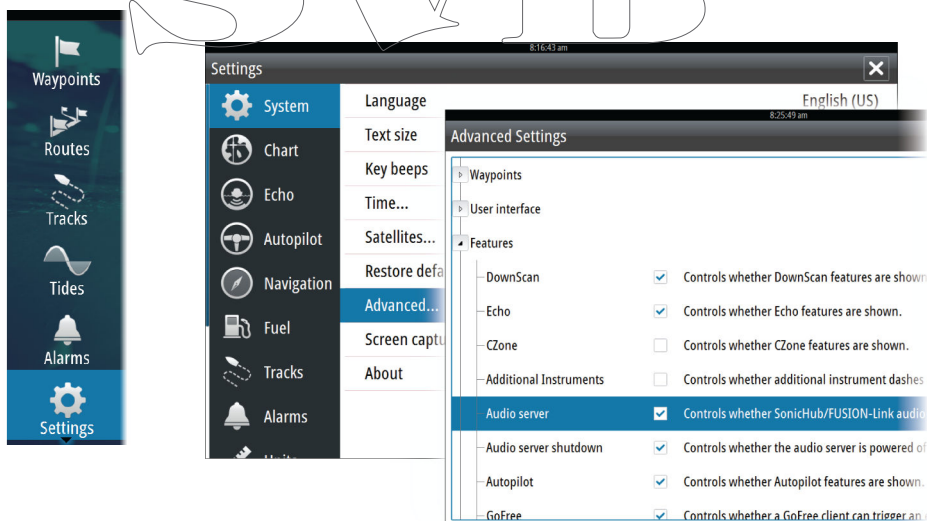
If a SonicHub server or a FUSION marine entertainment system is connected to the NMEA 2000 network, you can use the GO XSE to control and customize the audio system on your vessel.

When connected to a WM-3 Satellite module with an active subscription, you can include SiriusXM products on your system. You can also connect a SiriusXM radio to a FUSION system. Sirius audio and weather service covers inland U.S. waters and coastal areas into the Atlantic and Pacific oceans, Gulf of Mexico, and the Caribbean Sea. The SiriusXM products received vary depending on your selected subscription package. For more information refer to www.siriusXM.com.

Before you can start using your audio equipment, it must be installed according to the GO XSE Installation manual and to the documentation included with the audio device.

Enabling audio

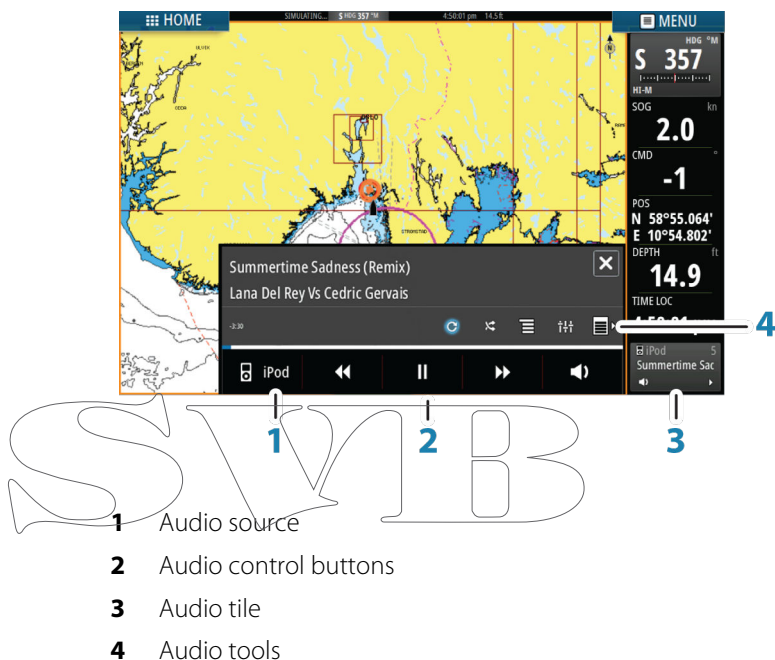
A compatible audio device connected to the NMEA 2000 network should automatically be identified by the system. If not, enable the feature from the **Advanced Settings** dialog.



The Audio panel

You activate the audio panel by activating the audio tile in the Instrument bar.

The control buttons, tools and options vary from one audio source to another as described later in this chapter.



Operating the audio system

1. Select the Audio tile in the Instrument bar to activate the Audio overlay.
2. Select the options icon and then select the audio server.
3. Select the source icon and then select the audio source.
 - Number of sources depends on the active audio server.
4. Use the panel buttons to control your audio system.

For available options, refer to the documentation following your audio equipment.

13

Alarms

Alarm system

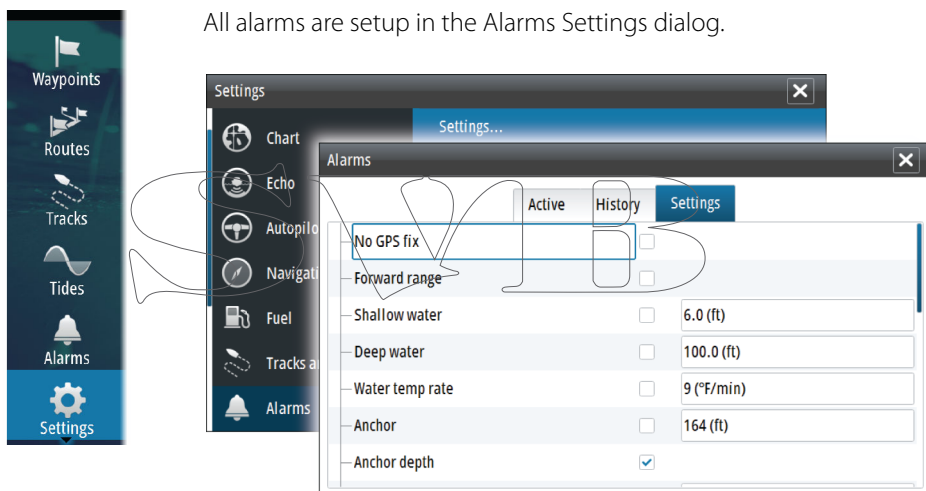
The system continuously checks for dangerous situations and system faults while the system is running. When an alarm situation occurs, an alarm message pops up on the screen.

If you have enabled the siren, the alarm message is followed by an audible alarm, and the switch for external alarm becomes active.

The alarm is recorded in the alarm listing so that you can see the details and take the appropriate corrective action.

Alarms dialog

All alarms are setup in the Alarms Settings dialog.



14

Tools

By default, the Tools panel includes icons used for accessing options and tools that are not specific to any panel.

When external equipment is integrated to the unit, new icons might be added to the Tools panel. These icons are used for accessing the external equipment's features.

Waypoints/routes/tracks

List of waypoints, routes, and tracks with details.

Select the waypoint, route, or track you wish to edit or delete.

Tides

Displays tide information for the tide station nearest to your vessel.

Select the arrow panel buttons to change the date, or select the date field to access the calendar function.

Available tide stations can be selected from the menu.

Alarms

Active alarms

List of active alarms.

Alarm history

List of all alarms with time stamp.

Alarm settings

List of all available alarm options in the system, with current settings.

Settings

Provides access to application and system settings.

Vessels

Status listing

List of all AIS and DSC vessels with available information.



Message listing

List of all messages received from other AIS vessels with time stamp.

Sun, Moon

Displays sunrise, sunset, moonrise and moonset for a position based on entered date and the position's latitude/longitude.

TriptIntel

Provides trip management functionality and trip information. For more information, refer to the Operator manual

Files

File management system for Files, Waypoints, Routes, Trails, and Settings.

To view files, select a file in the Files panel and then the view file option in the Details dialog. You can copy screen captures and logs to a card in the card reader.

You can also export System Settings, Waypoints, Routes, and Trails to a memory card.

To view recorded sonar logs, use the view sonar log option in the Sonar settings dialog.

Find

Search function for chart items (waypoints, routes, tracks, etc.).

GoFree Shop

→ **Note:** The built-in wireless functionality must be connected to an external wireless hotspot in order to access the GoFree Shop. Refer to *"Connect and disconnect from a wireless hotspot"* on page 35.

Opens the GoFree Shop web site. At the GoFree Shop you can browse, purchase, and download compatible charts for your system. You can also upload your Echosounder logs to be shared on Social Map charts. When you log on, the system automatically gives you a notification if a new software version is available for your system. If an update is available, you can download it to a card slot or defer the download until later.

SVIB

