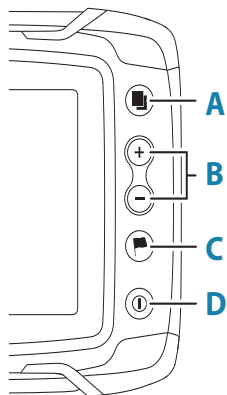
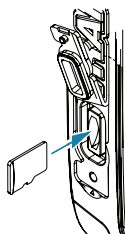


Keys



A	Pages	<ul style="list-style-type: none"> • Press to activate the home page
B	Zoom in/out	<ul style="list-style-type: none"> • Press to zoom the image • Simultaneous press both keys to save a Man Overboard (MOB) waypoint at the current vessel position
C	Waypoint	<ul style="list-style-type: none"> • Press to open the new waypoint dialog • Press twice to save a waypoint • Press and hold to access the find dialog
D	Power	<ul style="list-style-type: none"> • Press to turn the unit ON • Press and hold to turn the unit OFF • When ON press once to display the system controls dialog <ul style="list-style-type: none"> - repeat short presses to cycle the backlight brightness

Card reader



- To insert, carefully slide the card into the slot until it clicks into place
- To remove, carefully push in the card until it clicks out of place

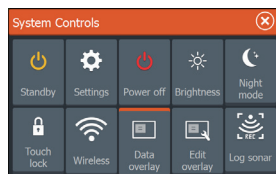
System controls dialog

Used for quick access to system settings.

To activate:

- press the power key

→ **Note:** The content of the system controls dialog depends on connected equipment and active panel.



Home page

Activate the home page by pressing the pages key.

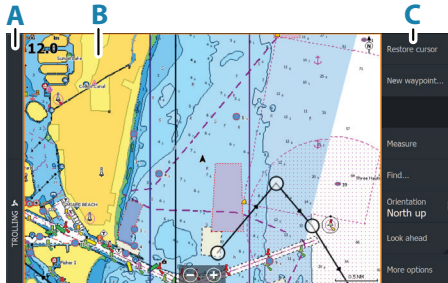


- A. Settings button
- B. Application buttons
- C. Close button
- D. Favorites
- E. Toolbar buttons

Application pages

To activate an application page:

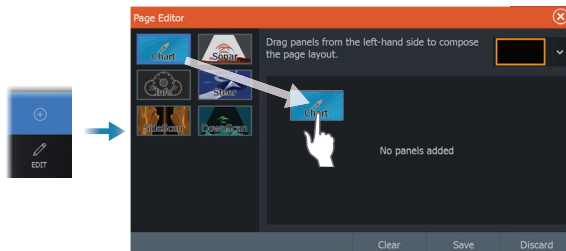
- tap the application button (full page panel)
- tap a favorites button
- press and hold an application button to select a predefined quick split page



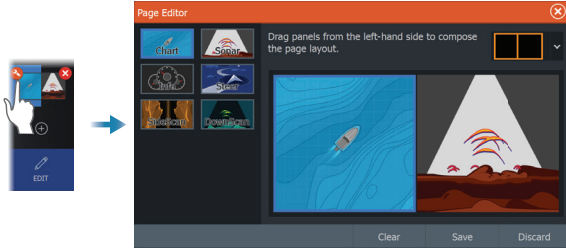
- A. Control bar
- B. Application panel
- C. Menu

Favorite pages

Add a favorite page



Edit a favorite page

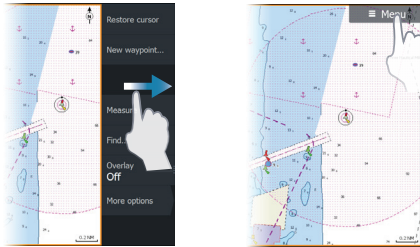


 Edit favorite page

 Delete favorite page

Menus

The panel menu



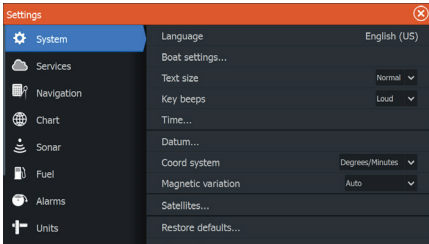
To hide the panel menu:

- swipe the menu to the right

To restore the panel menu:

- press the menu button

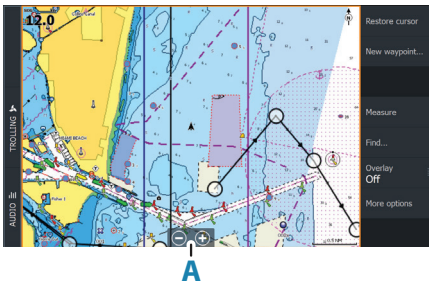
Settings menu



To activate the settings dialog:

- select the settings button in the system controls dialog
- select the settings button on the home page

Chart



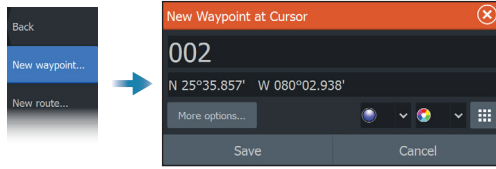
To navigate the chart panel:

- zoom the chart by using the zoom buttons (A), or by using the + or - buttons on the keypad
- move the view in any direction by panning the chart
- display information about a chart item by tapping the item

Waypoints

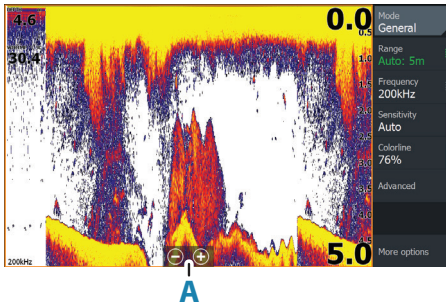
To create a new waypoint:

- select the new waypoint option in the menu



→ **Note:** With cursor inactive, the waypoint will be placed at vessel's position. With cursor active, the waypoint will be placed at selected cursor position.

Sonar

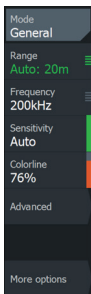


To navigate the sonar image:

- zoom the image by tapping the zoom buttons (A), or by using the + or - buttons on the keypad
- view sonar history by panning the image
- adjust sensitivity and colorline from the panel menu
- toggle available sonar frequencies from the menu

Setting up the image

Use the sonar menu options to set up the image.

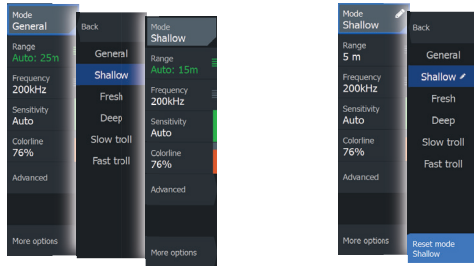


- The range settings determines which water depth that is visible on the screen
- The unit supports several transducer frequencies. Available options depend on type of transducers connected to the system
- Increasing sensitivity shows more detail on the screen. Decreasing sensitivity displays less. Auto sensitivity automatically adjusts the sonar return to the optimal levels
- Colorline adjust the colors of the display to help differentiate softer targets from harder ones

→ **Note:** When the cursor is active, some options on the sonar menu are replaced with cursor mode features. Select clear cursor to return to the normal sonar menu.

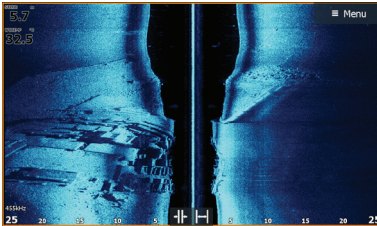
Fishing mode

Used to select predefined sonar settings designed for specific fishing conditions.

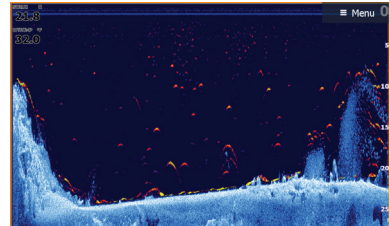


→ **Note:** Use shallow water fishing mode when fishing in less than 18 meter (60 feet) of water.

SideScan and DownScan



SideScan

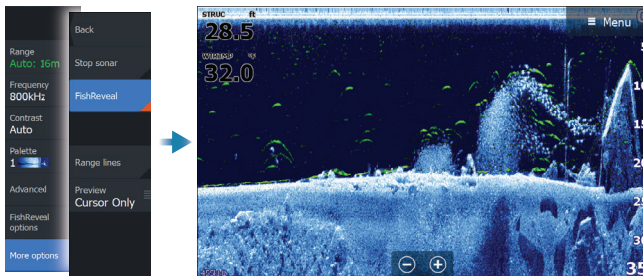


DownScan

- Zoom the image by using the zoom keys

Fish reveal

Select FishReveal to display fish arches in the DownScan image.



Product manuals

For more product documentation, technical specifications and declarations, refer to the product website on: www.lowrance.com