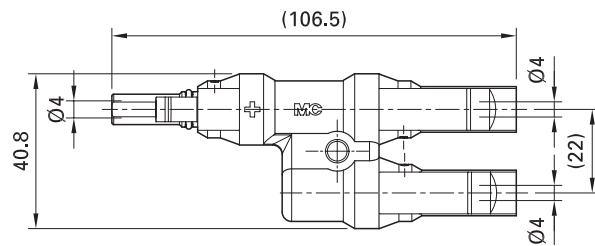
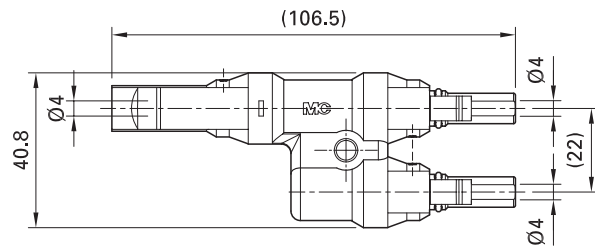


Abzweighbuchse, -stecker MC4



Branch socket, branch plug MC4



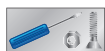
Technische Daten

Steckverbindersystem
Bemessungsspannung
Bemessungsstrom
Prüfspannung
Umgebungstemperaturbereich
Obere Grenztemperatur
Schutzart, gesteckt
ungesteckt
Überspannungskat./Verschmutzungsgrad
Kontaktwiderstand der Steckverbinder
Schutzklasse
Kontaktsystem
Kontaktmaterial
Isolationsmaterial
Verriegelungssystem
Flammklasse

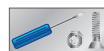
Technical data

Connector system
Rated voltage
Rated current
Test voltage
Ambient temperature range
Upper limiting temperature
Degree of protection, mated
unmated
Overvoltage category/Pollution degree
Contact resistance of plug connectors
Safety class
Contact system
Contact material
Insulation material
Locking system
Flame class

Ø 4mm
1000V DC (MC)
30A
6kV (50Hz, 1min.)
-40°C...+90°C (MC)
105°C (MC)
IP67
IP2X
CATIII/2
≤0,5mΩ
II
MC Kontaktlamellen
MC Multilam
Kupfer, verzinkt
Copper, tin plated
PC
Snap-in
UL94-V0



Sicherungshülse Seite 53
Verschlusskappen Seite 55
Entriegelungsschlüssel Seite 61



Safety locking clip page 53
Sealing caps page 55
Unlocking tool page 61