



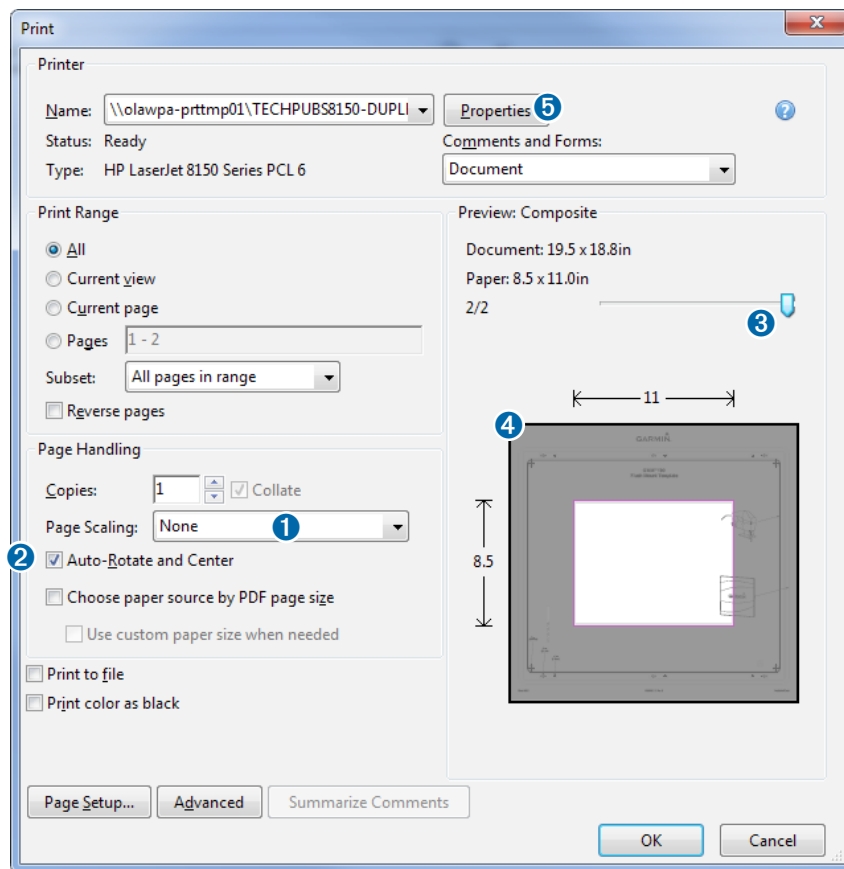
Printing a Mounting Template

NOTICE

It is not recommended that you print a mounting template on your own. Use the template that came in the product box.

If you do print the template, you must follow these instructions for printing a mounting template precisely. To print large templates, you need large enough paper and printer. Failure to have the correct sized paper and printer, or a failure to follow these instructions, may result in an incorrectly sized template and therefore an incorrect cutout (too large or too small) on the mounting surface of your boat.

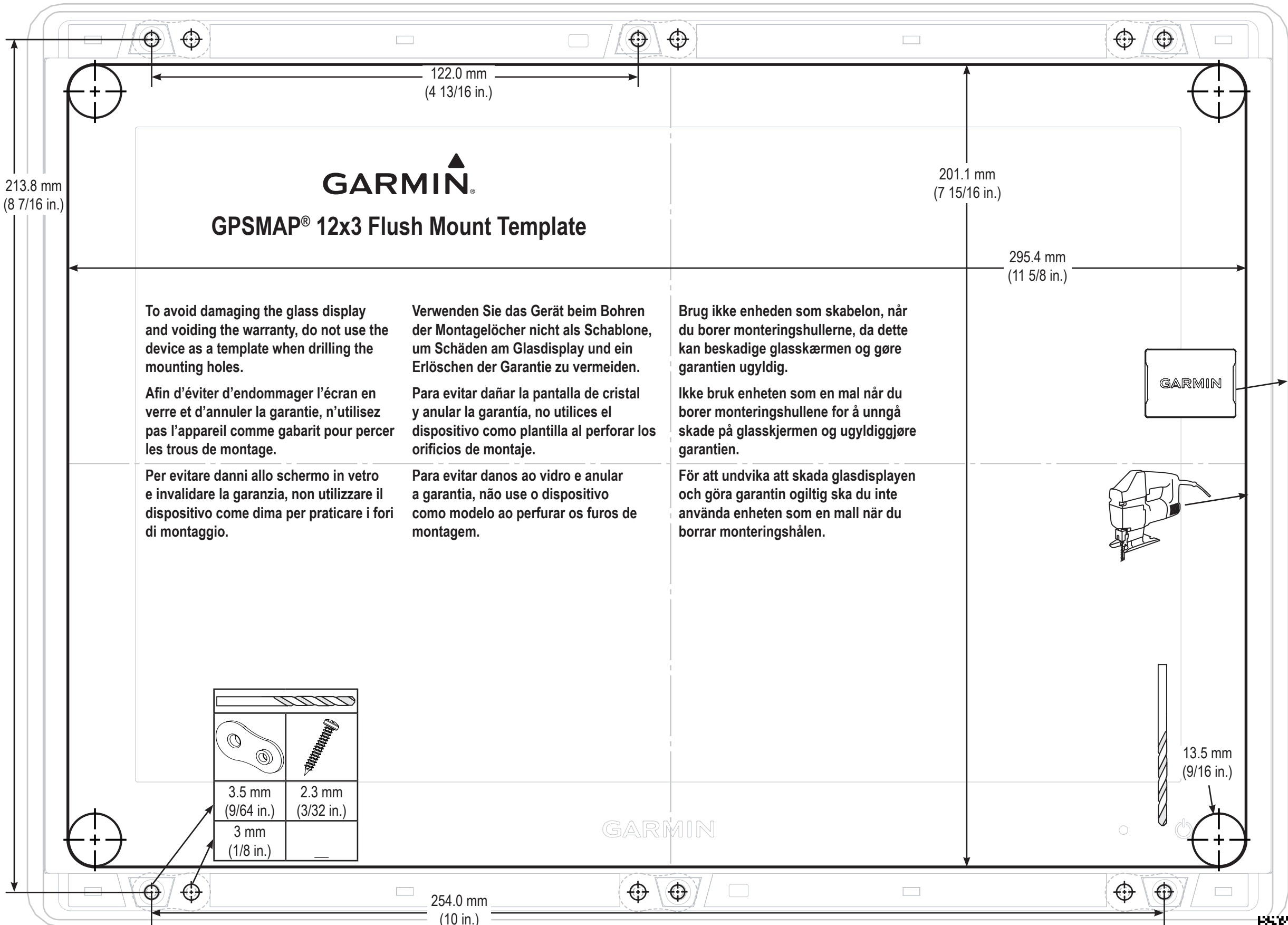
- 1 Select **File > Print**.



- 2 Select **None** for **Page Scaling** ①.
- 3 Ensure the check mark is next to **Auto-Rotate and Center** ②.
- 4 Drag the arrow ③ to the right, to view page 2 in the window below.
- 4 Verify that the paper size is larger than the template ④.
In this example, the paper is not larger than the template.
- 5 If the paper size is not large enough, select **Properties** ⑤ and select a **Page Size** that is larger than the template.

NOTICE

Garmin is not responsible for any damages or expenses resulting from a miscut mounting surface arising from a failure to follow these instructions.



213.8 mm
(8 7/16 in.)

122.0 mm
(4 13/16 in.)

201.1 mm
(7 15/16 in.)

GARMIN®
GPSMAP® 12x3 Flush Mount Template

295.4 mm
(11 5/8 in.)

To avoid damaging the glass display and voiding the warranty, do not use the device as a template when drilling the mounting holes.

Verwenden Sie das Gerät beim Bohren der Montagelöcher nicht als Schablone, um Schäden am Glasdisplay und ein Erlöschen der Garantie zu vermeiden.

Brug ikke enheden som skabelon, når du borer monteringshullerne, da dette kan beskadige glasskærmen og gøre garantien ugyldig.

Afin d'éviter d'endommager l'écran en verre et d'annuler la garantie, n'utilisez pas l'appareil comme gabarit pour percer les trous de montage.

Para evitar dañar la pantalla de cristal y anular la garantía, no utilices el dispositivo como plantilla al perforar los orificios de montaje.

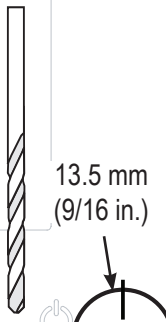
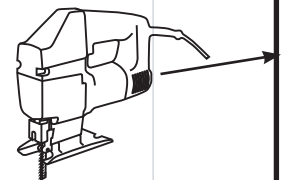
Ikke bruk enheten som en mal når du borer monteringshullene for å unngå skade på glasskærmen og ugyldiggjøre garantien.

Per evitare danni allo schermo in vetro e invalidare la garanzia, non utilizzare il dispositivo come dima per praticare i fori di montaggio.

Para evitar danos ao vidro e anular a garantia, não use o dispositivo como modelo ao perfurar os furos de montagem.

För att undvika att skada glasdisplayen och göra garantin ogiltig ska du inte använda enheten som en mall när du borrar monteringshålen.

3.5 mm (9/64 in.)	2.3 mm (3/32 in.)
3 mm (1/8 in.)	



13.5 mm
(9/16 in.)

GARMIN

254.0 mm
(10 in.)

