

For further information www.tessilmare.com
Visit our video channel www.youtube.com/tessilmare

**TESSILMARE**

bino40

TOOLS



A4 (316) type self drilling screws
Oval head style (TGS)
Phillips Screw Size N.10, Head 9,5 mm Shank 4,8 mm
Specific codes: DIN7983 or UNI6956, also ISO 7051
WARNING: it is better not to use A2 screws



Drill and Screwdriver

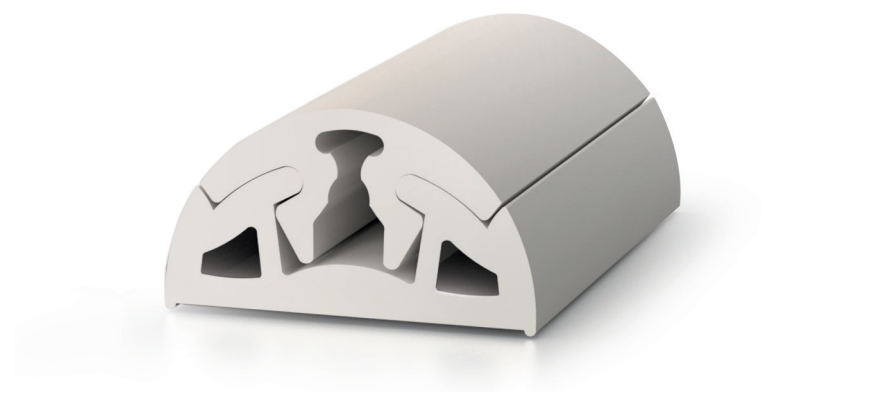


Tip 4/4,2 mm



Rubber hammer

BINO40 PROFILES - ASSEMBLY INSTRUCTIONS



PROJECTED AND DESIGNED BY TESSILMARE IN ITALY

PATENT PENDING



1. PREPARATION OF THE PROFILE



The Bino 40 profile consists of 2 modules, one base and one “top” which covers the fixing screws.

The product fits cold as its flexibility is very high.

Lay the profile on the ground around the boat or on the boat itself, the more the profile is properly outstretched, the easier it is to install it.

The peculiarity of this product is that it can be adapted to very complex curves, with both negative and positive acute radius, the product does not need any pre-heating so the assembly is fast.

The modularity of Bino 40 allows you to replace one of the two parts over time, indistinctly.

2. FIXING THE BASE PROFILE THROUGH SCREWS AND RIVETS



Drill and screw the base profile directly to the boat.

3. APPLICATION OF THE TOP PROFILE



Install the top profile by pressing it with a rubber hammer.

4. FINISH WITH THE END-CAPS

