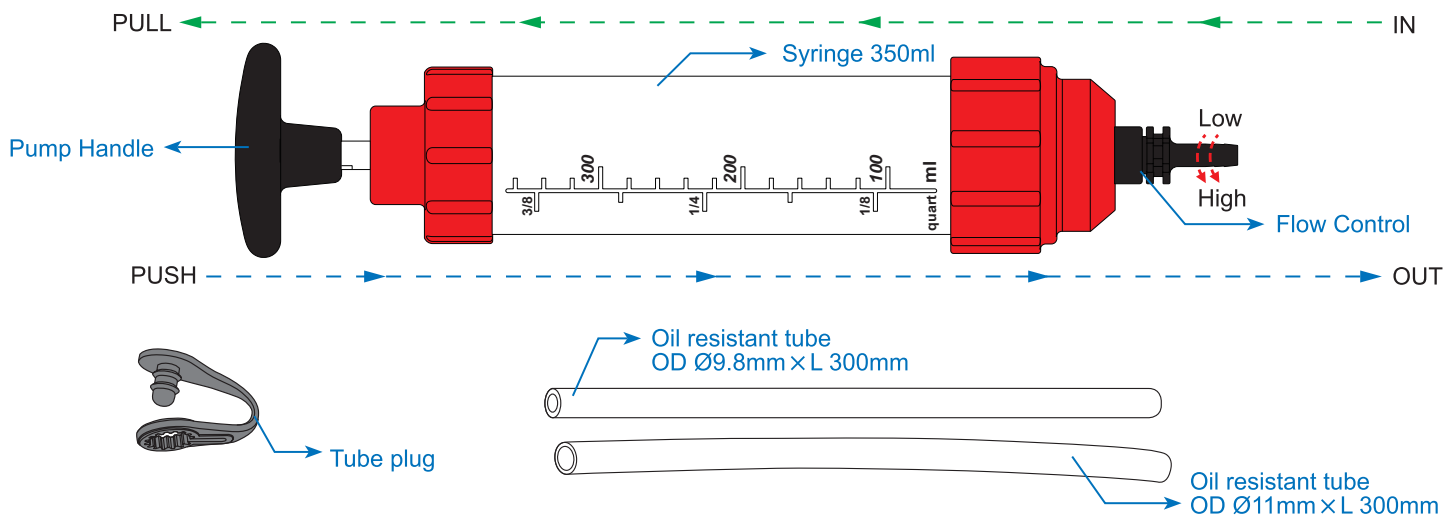


# Utility IN & OUT Fluid Syringe

CJ-2180

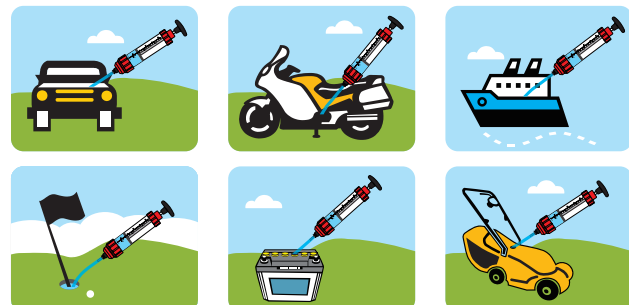
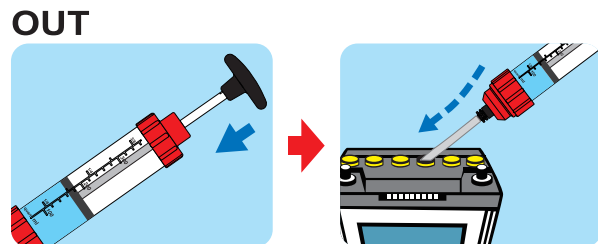
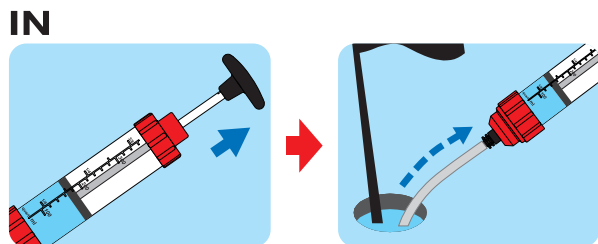
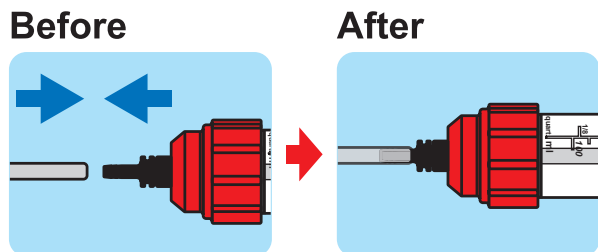


## ILLUSTRATIONS



## APPLICATION

### OPERATION



### PRODUCT FEATURES

1. It can be used for any non-corrosive lubricants.
2. The flow rate is adjustable.
3. Connect different tubes for different functions.

### CAUTION

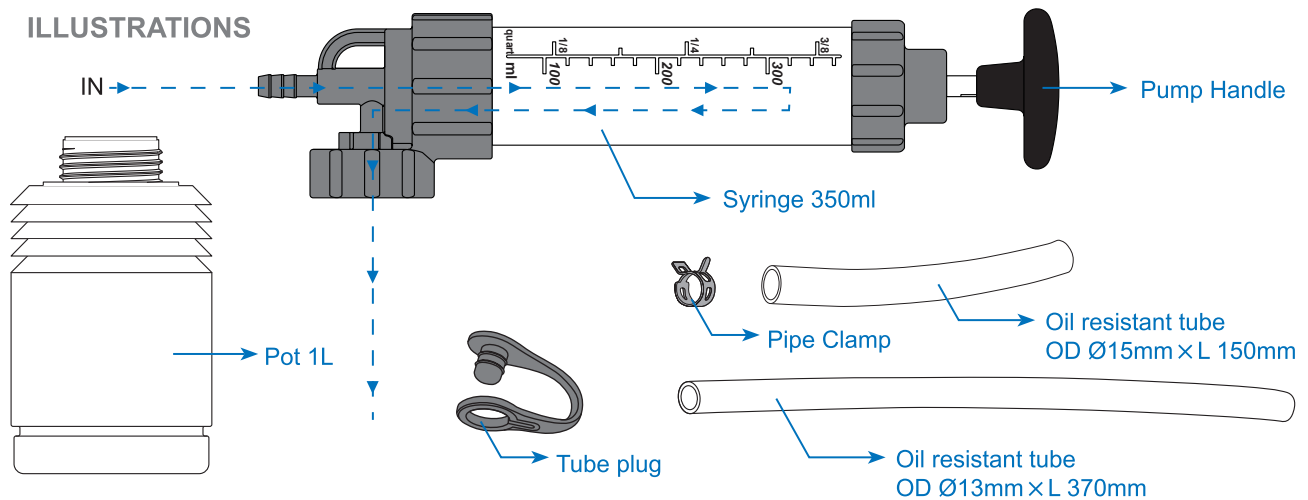
1. Do not use it for gasoline or any corrosive liquids.
2. Do not dismantle any part of the product.

# Fluid Syringe with Suction

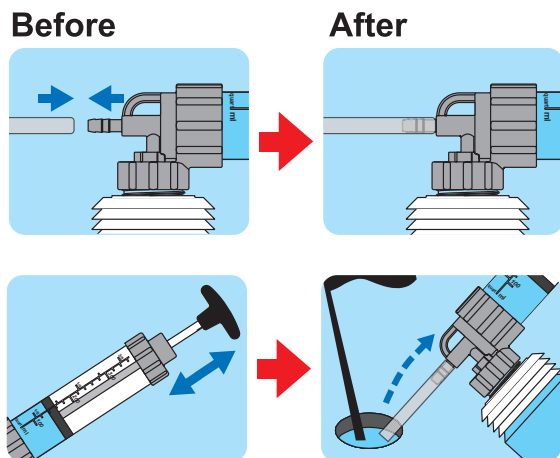
CJ-2183



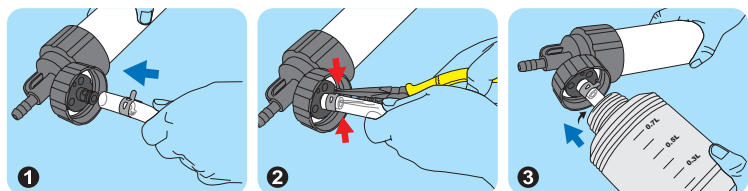
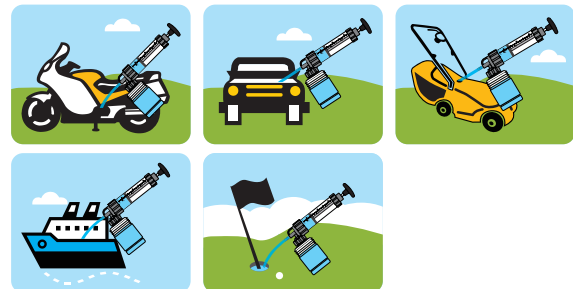
## ILLUSTRATIONS



## OPERATION



## APPLICATION



## PRODUCT FEATURES

1. It can be used for any non-corrosive lubricants.
2. Suck the liquid into the pot.
3. The pot can be removed and connect any tube for extension use.

## CAUTION

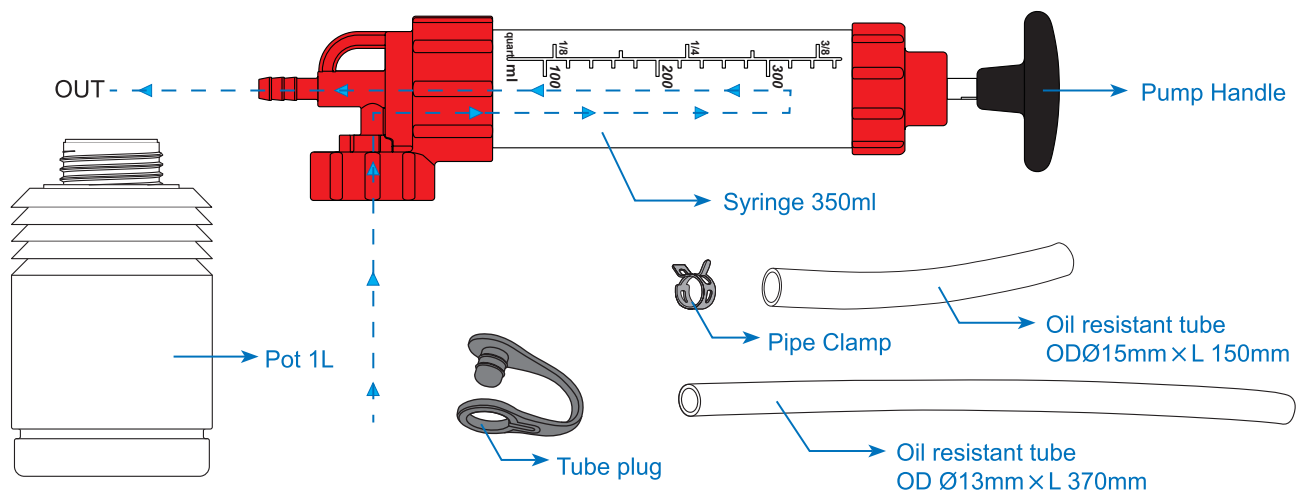
1. Do not use it for gasoline or any corrosive liquids.
2. Do not dismantle any part of the product.

# Fluid Syringe with Discharge

CJ-2185

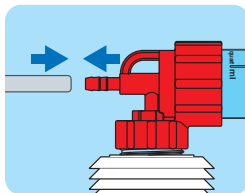


## ILLUSTRATIONS

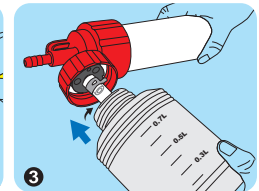
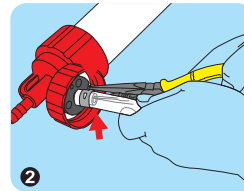
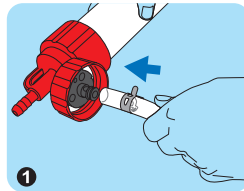
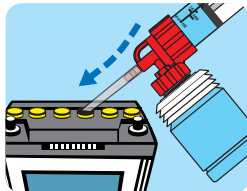
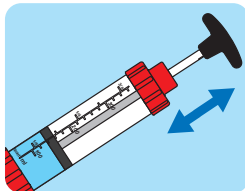
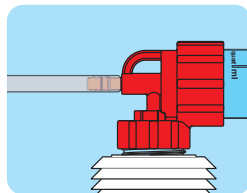


## OPERATION

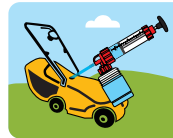
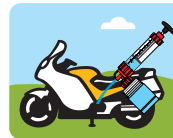
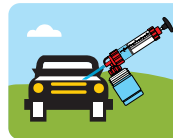
Before



After



## APPLICATION



## PRODUCT FEATURES

1. It can be used for any non-corrosive lubricants.
2. Discharge the liquid from the pot.
3. The pot can be removed and connect any tube for extension use.

## CAUTION

1. Do not use it for gasoline or any corrosive liquids.
2. Do not dismantle any part of the product.